

CAMPDEN HILL COURT

KENSINGTON W8





CAMPDEN HILL COURT

KENSINGTON W8

A superb, bright four bedroom second floor apartment located within one of Kensington's most popular purpose built period mansions, offering versatile living accommodation.

The apartment also benefits from 24 hour portorage facilities, a lift and views over the communal gardens at the rear of the property.

Campden Hill Court is situated on the corner of Campden Hill Road and Holland Street, close to Kensington High Street, with its excellent restaurants, shops and transport facilities.







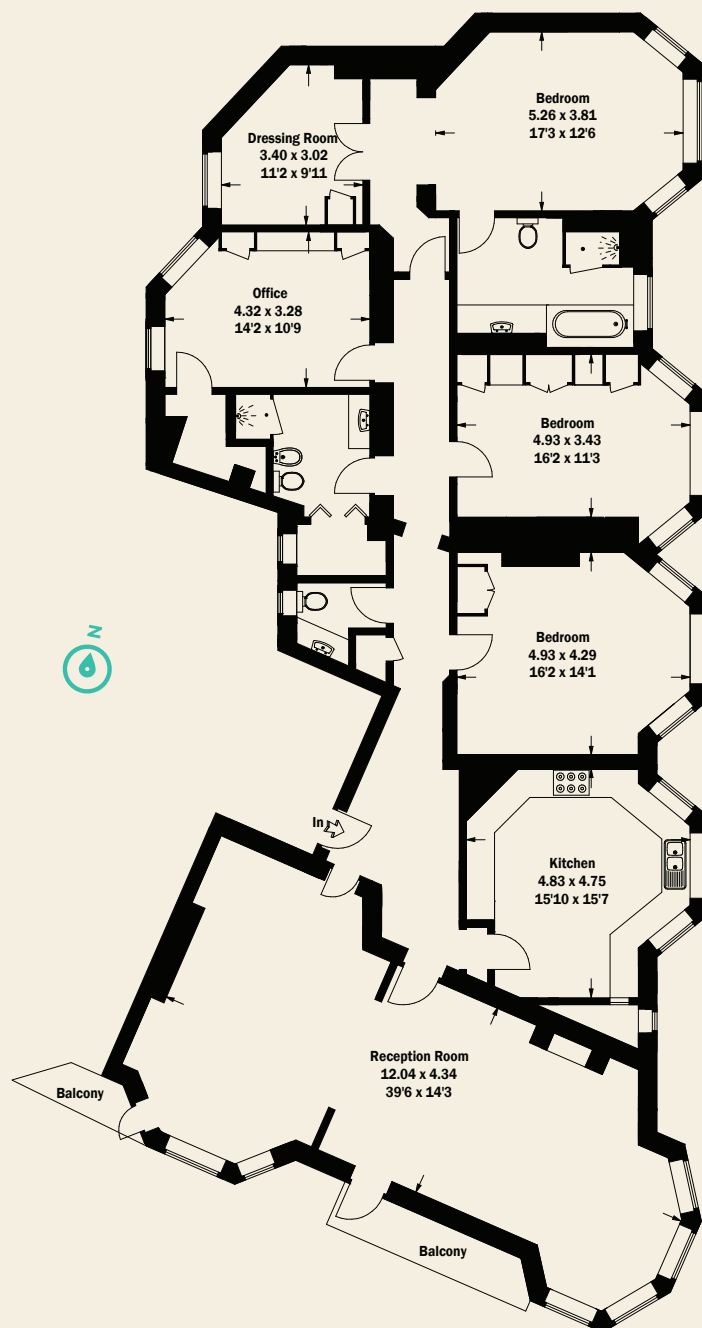
CAMPDEN HILL COURT

KENSINGTON W8

CONSUMER PROTECTION FROM UNFAIR TRADING REGULATIONS 2008. THIS BROCHURE AND THE DESCRIPTIONS AND MEASUREMENTS HEREIN DO NOT CONSTITUTE REPRESENTATION AND WHILST EVERY EFFORT HAS BEEN MADE TO ENSURE ACCURACY, THIS CANNOT BE GUARANTEED.

PRICE: £4,388,000
TENURE: SHARE OF FREEHOLD
GROSS INTERNAL AREA: 222.4 SQ M/2,394 SQ FT APPROX.
LOCAL AUTHORITY: ROYAL BOROUGH OF KENSINGTON & CHELSEA
EPC RATING: C

4 BEDROOMS, 3 BATHROOMS (1 EN SUITE),
DOUBLE RECEPTION ROOM, KITCHEN, DRESSING
ROOM, 2 BALCONIES.



SECOND FLOOR

KENSINGTON
T 020 7795 4288
10 HORNTON STREET LONDON W8 4NW
E KENSINGTON@BECTIVE.CO.UK

WWW.BECTIVE.CO.UK

BECTIVE
-LESLIE MARSH-