

4 Fairmeadside
Loughton

LAWLOR^s
ELITE



LOCATION LOCATION LOCATION



4 Fairmeadside

Ground Floor

Entrance Hall
Formal Living Room
Dining Room
Family TV Room
Kitchen / Breakfast Room
Utility Room
Cloakroom

First Floor

Landing
Master Bedroom with En-Suite Bathroom
Three Further Double Bedrooms
Family Bathroom

Exterior & Garden

Front Garden:
Double Garage
Off Street Parking
Shrub Borders

Rear Garden:
Patio
Shrub Borders
Garden Shed
Remainder Lay To Lawn

LOCATION

London City Airport - 14 miles

Heathrow Airport - 46 miles

Gatwick Airport - 57 miles

Underground Station Loughton - 1 mile

Motorway Junction M11 J5 - 2 miles



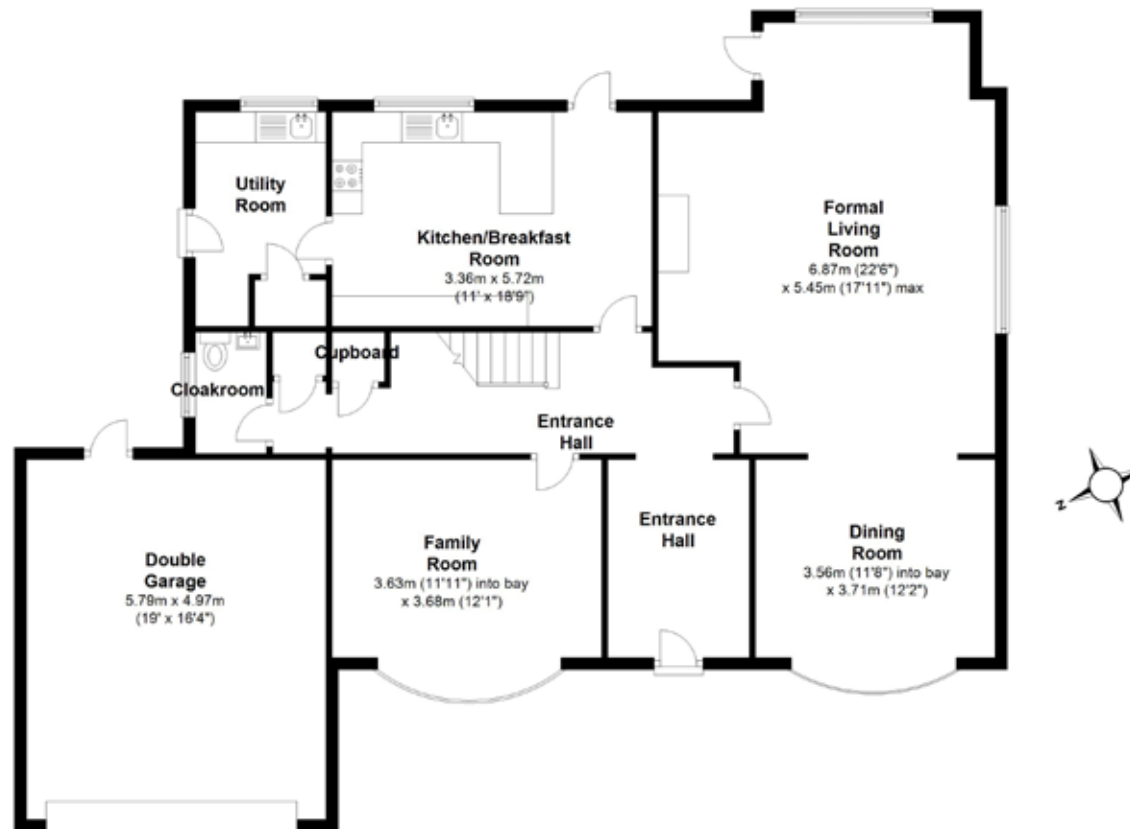
LOUGHTON



DETAILS

Ground Floor

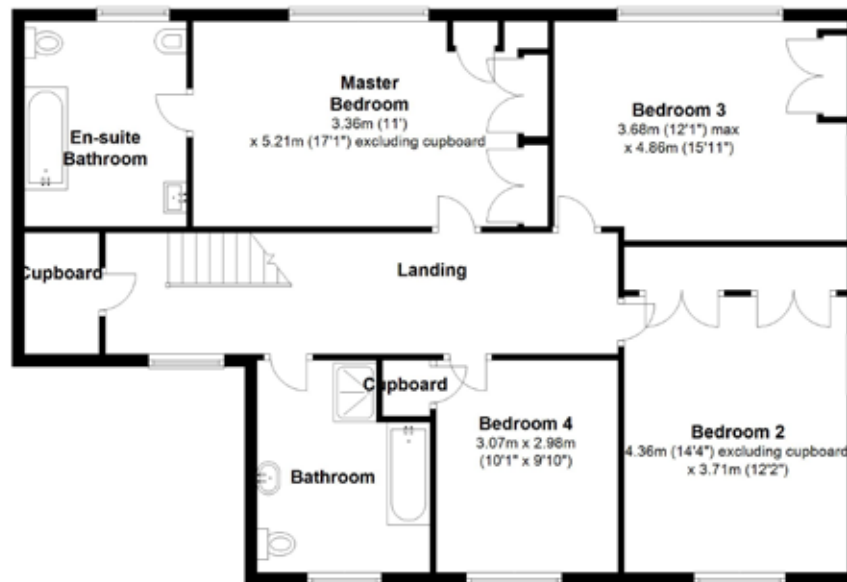
The property accommodation has been designed over two floors with the ground floor comprising of spacious entrance hall, formal living room with central fireplace and door opening onto the rear garden patio, dining room, TV family room, kitchen / breakfast room, utility room and downstairs cloakroom.





First Floor

The first floor offers master bedroom with en-suite bathroom with fitted wardrobes, two double bedrooms with fitted wardrobes, double bedroom and large family bathroom





Exterior

The beautiful rear mature garden is surrounded by planted borders and trees offering complete privacy. The large wide patio is ideal for al fresco dining and is complimented by a manicured lawn and garden shed.

To the front of the property there is a double garage, ample off street parking and planted borders.





LAWLOR^s
E L I T E

165 High Road, Loughton,
Essex IG10 4LF
T 0208 418 1890

Agents Notes

With approximate measurements these particulars have been prepared in good faith by the selling agent in conjunction with the vendor(s) with the intention of providing a fair and accurate guide to the property. However, they do not constitute or form any part of an offer or contract nor may they be regarded as representations, all interested parties must verify themselves their accuracy. No tests or checks have been carried out in respect of heating plumbing electrical installation or any type of appliance which may be included.