

**Village Road, Enfield, EN1 2EU**



**£1,500,000**

This ELEVEN BEDROOM DETACHED HOUSE is located in Bush Hill Park just a short walk from Enfield Town with its Mainline Station which offers fast links into London Liverpool Street with connections to the underground (Victoria Line) at Seven Sisters. This ideal family home falls within the catchment areas of some of Enfield's most sought after schools including Raglan Primary School and Galliard Primary School. The accommodation comprises Eight Bedrooms many with en-suite facilities, two reception rooms, fitted kitchen, utility room, family bathroom, along with two self contained annexes, one with two bedrooms and one with one bedroom, there is also off street parking for numerous vehicles. Internal viewing of this spacious property is highly recommended. Call to arrange your accompanied viewing.

#### **Entrance Hallway**

Stained glass window to side aspect, coving to ceiling, stairs to first floor, understairs storage cupboard, smoke alarm, alarm panel, feature stone fireplace, inset spot lights, power points, tiled flooring. Doors to

#### **Lounge / Reception One**

**36'35 x 15'22 (10.97m x 4.57m)**

UPVC double glazed bay window to front aspect, feature open fireplace with wooden over mantle, coving to textured ceiling, ceiling rose, bi-fold doors to rear aspect, TV point, telephone point, power points, wooden flooring. Open to

#### **Fitted Kitchen**

**9'41 x 8'16 (2.74m x 2.44m)**

UPVC double glazed window to rear aspect, coving to ceiling, ceiling rose, range of base and eye level units with marble effect work surfaces, electric oven, gas hob, integrated extractor, butler style sink and drainer unit, space for fridge freezer, integrated dishwasher, inset spotlights, power points, wooden flooring.

#### **Reception Two**

**23'01 x 17'75 (7.04m x 5.18m)**

UPVC double glazed window to rear aspect, coving to textured ceiling, ceiling rose, feature open fireplace with stone overmantle, telephone point, TV point, power points, UPVC double glazed door to rear aspect, wooden flooring.

#### **Downstairs Cloakroom**

Vanity wash hand basin, high level WC, coving to ceiling, ceiling rose, fitted units, extractor fan, tiled flooring.

#### **Utility Room**

Window to side and rear aspect, fitted units, plumbing for washing machine, sink and drainer unit, separate electrical circuits, power points, concrete flooring.

#### **First Floor Landing**

Stairs to second floor. Doors to

#### **Bedroom One**

**18'88 x 13'82 (5.49m x 3.96m)**

UPVC double glazed bay window to front aspect, stained glass window to side aspect, coving to ceiling, ceiling rose, TV point, power points, wooden flooring. Door to

#### **En-Suite**

UPVC double glazed opaque window to side aspect, walk in shower cubicle with thermostatically controlled shower, pedestal wash hand basin with mixer tap, low high level WC, inset spot lights, part tiled walls.

#### **Bedroom Two**

UPVC double glazed fitted wardrobes, coving to ceiling, ceiling rose, power points, wooden flooring.

#### **Bedroom Three**

UPVC double glazed windows, fitted wardrobes, coving to ceiling, ceiling rose, power points, wooden flooring.

Double Glazed windows, wooden flooring, fitted wardrobes, power points, coved ceiling, ceiling rose.

#### **Bedroom Four**

**15'43 x 13'91 (4.57m x 3.96m)**

UPVC double glazed window to front aspect, fitted wardrobes, coving to ceiling, ceiling rose, power points, wooden flooring. Door to

#### **Ensuite**

Walk in shower cubicle with thermostatically controlled shower, pedestal wash hand basin with mixer tap, high level WC, tiled walls, tiled flooring.

High Level WC, pedestal wash basin with mixer tap, thermostatically controlled walk in shower, tiled flooring, tiled walls.

#### **Bedroom Five**

**26'05 x 9'59 (7.92m, 1.52m x 2.74m )**

UPVC double glazed window to rear aspect, fitted wardrobes, coving to ceiling, ceiling rose, power points, wooden flooring. Door to

#### **Ensuite**

Walk in shower cubicle with thermostatically controlled shower, pedestal wash hand basin with mixer tap, high level WC, tiled walls, tiled flooring.

#### **Second Floor Landing**

Doors to

#### **Bedroom Six**

**15'70 x 14'72 (4.57m x 4.27m)**

UPVC double glazed windows to side and rear aspect, fitted wardrobes and storage units, power points, eaves storage, wooden flooring.

#### **Bedroom Seven**

**16'44 x 12'70 (4.88m x 3.66m)**

UPVC double glazed window to rear aspect, fitted wardrobes and storage units, power points, eaves storage, wooden flooring.

#### **Bedroom Eight**

**13'61 x 10'53 (3.96m x 3.05m)**

UPVC double glazed window to front aspect, range of base and eye level units with roll top work surfaces, sink and drainer unit gas hob, space for fridge freezer, power points, wooden flooring.

#### **Bathroom**

UPVC double glazed opaque window to side aspect, four piece bathroom suite comprising Jacuzzi style bath with mixer tap and shower attachment, vanity wash hand basin, high level WC, bidet, part tiled walls, inset spotlights, extractor fan, tiled flooring.

#### **Annexes**

In addition to the main property there are two annexes, -one Two bedroom annex to the side and a one bedroom annex to the rear.

#### **Annex One - Lounge / Kitchen**

**22'41 x 12'51 (6.71m x 3.66m)**

UPVC double glazed bay window to front aspect, smoke alarm, telephone point, power points, TV point, inset spot lights, ceiling rose. Open plan to kitchen area with range of base and eye level units with roll top work surfaces, part tiled walls, electric hob, electric oven, chimney style extractor, sink and drainer unit with mixer tap, space for fridge freezer, power points.

#### **Annex One - Bedroom One**

**11'55 x 10'17 (3.35m x 3.05m)**

UPVC double glazed window to side aspect, built in wardrobes, telephone point, power points, ceiling rose, wooden flooring. UPVC double glazed door to patio

#### **Annex One - Bedroom Two**

**9'20 x 8'92 (2.74m x 2.44m)**

UPVC double glazed window to side aspect, telephone point, power points, chandelier, wooden flooring.

#### **Annexe One - Bathroom**

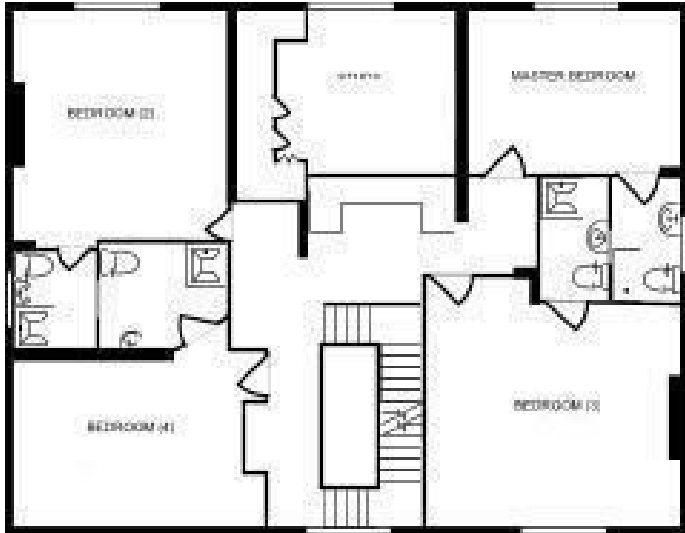
Three piece bathroom suite comprising panel enclosed bath with mixer tap and shower attachment, pedestal wash hand basin, low level WC, part tiled walls, extractor fan, tiled flooring.

#### **Annex Two - Lounge / Kitchen**

**11'14 x 9'92 (3.35m x 2.74m )**

UPVC double glazed windows to front and side aspect, double radiator, telephone point, TV point, power points, laminate wood style flooring. Leading to kitchen area with range of base and eye level units with roll top work surfaces, part tiled walls. space for fridge freezer, electric hob, power points, laminate wood style flooring.

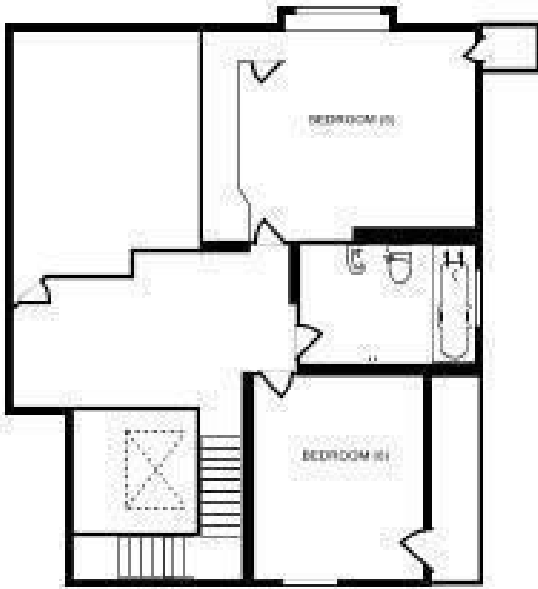




**FIRST FLOOR**  
1,232 SQ FT/114.56 SQ M



**GROUND FLOOR**  
1,406 SQ FT/130.71 SQ M



**SECOND FLOOR**  
838 SQ FT/77.86 SQ M

