

Liverpool Street, EC2Y

£9,950,000

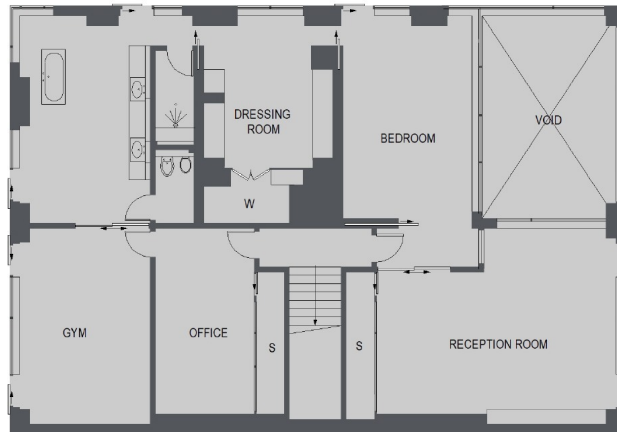
This luxurious duplex penthouse offers 6,000 sqft of space and floor to ceiling panoramic views of the city. Finished to an exceptional standard featuring master suite, three further bedrooms, bespoke kitchen, formal dining room and home cinema.

Located in the heart of The City's square mile, there are an abundance of restaurants and shops nearby. Both Moorgate and Liverpool Street stations are minutes away, providing excellent connections to the rest of London.

Features

- Duplex Penthouse
- Double Height Space
- Home Cinema Room
- Boffi Kitchen
- Private Residents Club
- 24 Hour Concierge

Moor Lane, London, EC2Y



UPPER GROUND FLOOR



LOWER GROUND FLOOR

TOTAL APPROX. FLOOR AREA (EXCLUDING VOID) 6077 SQ. FT. (564.6 SQ. M.)

Contact

To arrange a viewing call our office on the number below or visit our website.



Energy Rating: . We aim to make our particulars both accurate and reliable. However they are not guaranteed; nor do they form part of an offer or contract. If you require clarification on any points then please contact us, especially if you're traveling some distance to view. Please note that appliances and heating systems have not been tested and therefore no warranties can be given as to their good working order.