



Ribblesdale Road, SW16

£1,150,000

Dexters



Ribblesdale Road, London, SW16

An impressive five bedroom, three bathroom end of terrace freehold home extending to 2000 sq ft, over three floors, with a large garden and garage, located close to Graveney School in the sought after Furzedown area.

Set back from the road this imposing home enjoys a superb position on the street, ground floor accommodation includes a large reception room, adjoining dining room, a modern kitchen featuring a range of integrated appliances, a formal reception room/bedroom and a cloakroom.

Over the upper two floor are four double bedrooms, two of which have en suite bathrooms, and a further family bathrooms.

To the rear is a large garden with decked and lawned areas.

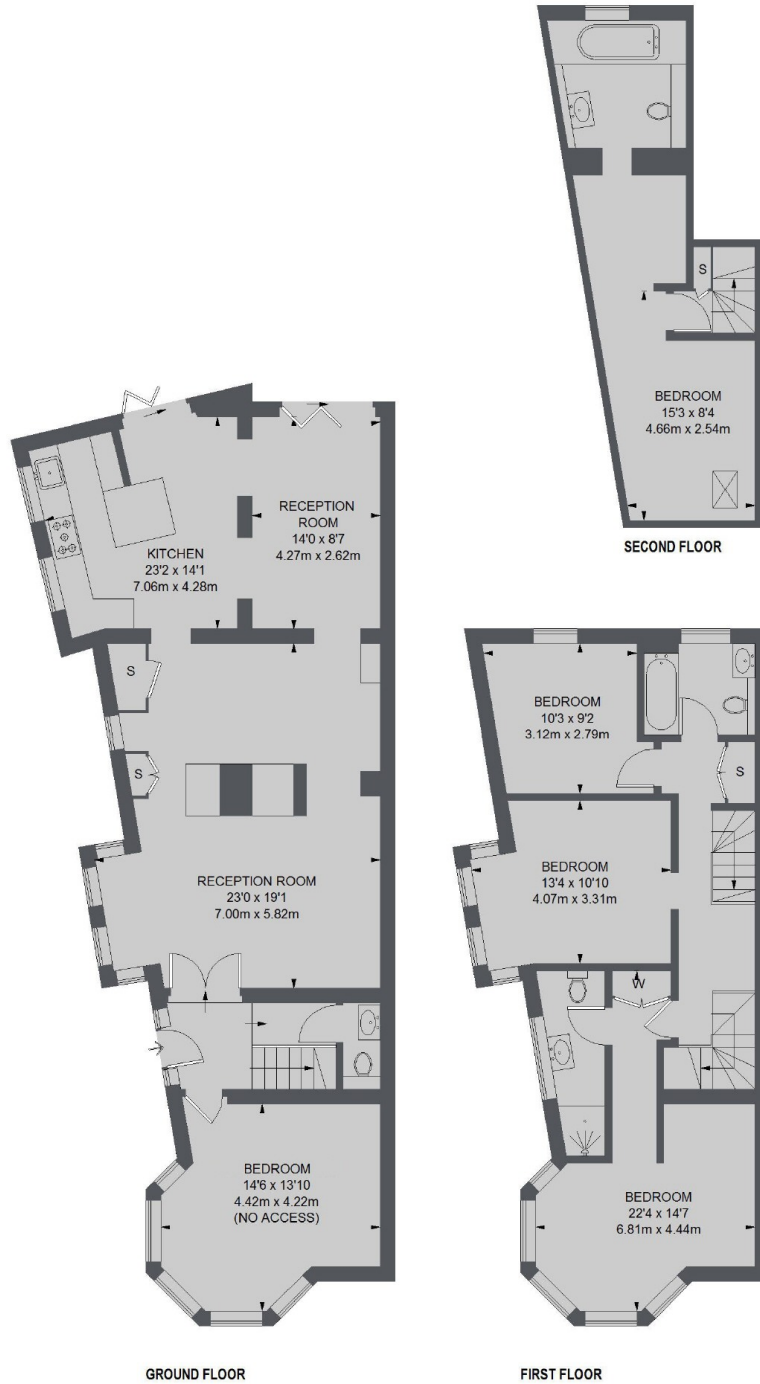
Ribblesdale Road is ideally located for the local schools, shops, amenities, and open spaces of Tooting Bec Common. Nearby transport includes Streatham Common Station, Tooting Station & Tooting Broadway Station.

Features

- Edwardian Freehold
- Large Reception Room
- Modern Kitchen
- Five Bedrooms
- Three Bathrooms
- Garage



Ribblesdale Road, London, SW16



TOTAL APPROX. FLOOR AREA 1979 SQ. FT. (183.87 SQ. M.)



Clapham Sales
28 Abbeville Road, Clapham,
London, SW4 9NG
Sales
020 8675 2224

Energy Rating: D. We aim to make our particulars both accurate and reliable. However they are not guaranteed; nor do they form part of an offer or contract. If you require clarification on any points then please contact us, especially if you're traveling some distance to view. Please note that appliances and heating systems have not been tested and therefore no warranties can be given as to their good working order.



dexters.co.uk