



Tooting, SW17

£2,600,000

Dexters



Bushnell Road, London, SW17

Double fronted Victoria family home in need of full refurbishment located in the sought after Heaver Estate Conservation Area.

The property offers natural accommodation of almost 4000 sq ft and has retained many of its original features and period charm.

The accommodation is laid out over three floors excluding the basement and offers the potential to be developed into the basement, rear and loft (STP).

To the rear there is an impressive south west facing garden with a number of mature trees, shrubs and borders.

Bushnell Road is a much sought after wide tree lined road within the highly regarded Heaver Estate Conservation Area. The property is well situated for easy access into Balham where there is a vast array of shops, bars and restaurants as well as Balham mainline and underground stations offering excellent transport links into the city. The green open spaces of Tooting Bec Common are also just a moment away.

Bushnell Road is a wide, tree lined street moments from Tooting Common and the excellent shops and restaurants of Balham High Road. Tooting tube station (Northern Line) & Balham station (Northern Line & National Rail) are both within easy reach also.

Features

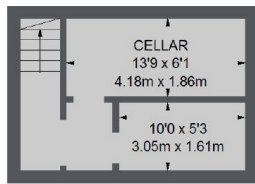
Development Potential
Seven/Eight Bedrooms
Double Fronted
Near the Common
Near Balham High Road
No Chain



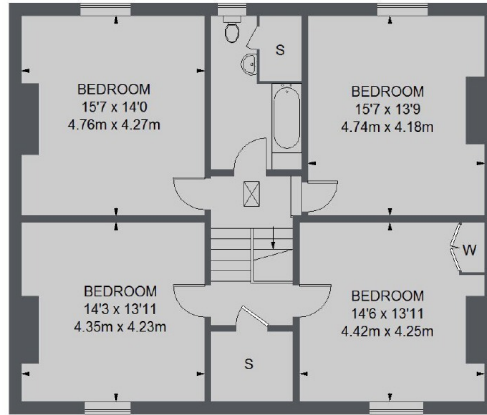




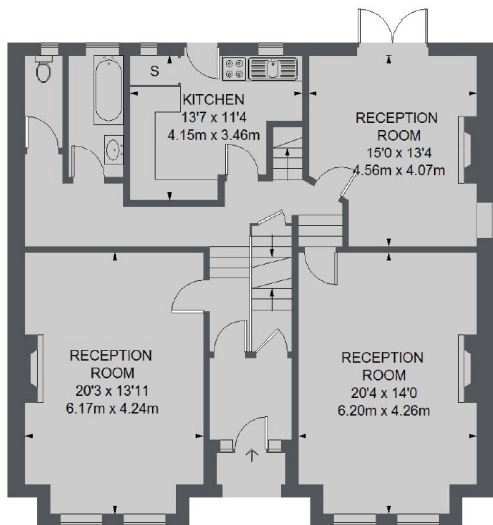
Bushnell Road, London, SW17



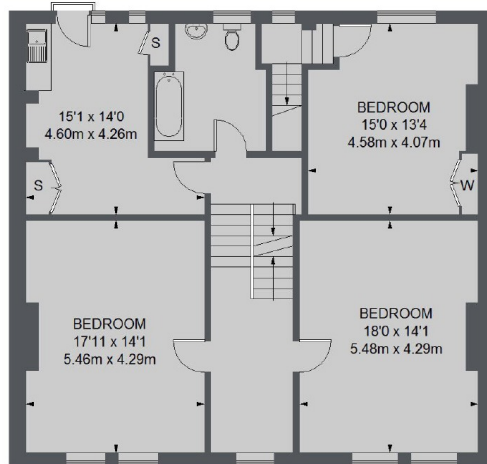
BASEMENT



SECOND FLOOR



GROUND FLOOR



FIRST FLOOR

TOTAL APPROX. FLOOR AREA 3704 SQ. FT. (344.09 SQ. M.)

Dexters

Clapham Sales
28 Abbeville Road, Clapham,
London, SW4 9NG

Sales
020 8675 2224

Energy Rating: E. We aim to make our particulars both accurate and reliable. However they are not guaranteed; nor do they form part of an offer or contract. If you require clarification on any points then please contact us, especially if you're traveling some distance to view. Please note that appliances and heating systems have not been tested and therefore no warranties can be given as to their good working order.

 **RICS** | Regulated
Estate Agent
and Letting Agent

dexters.co.uk