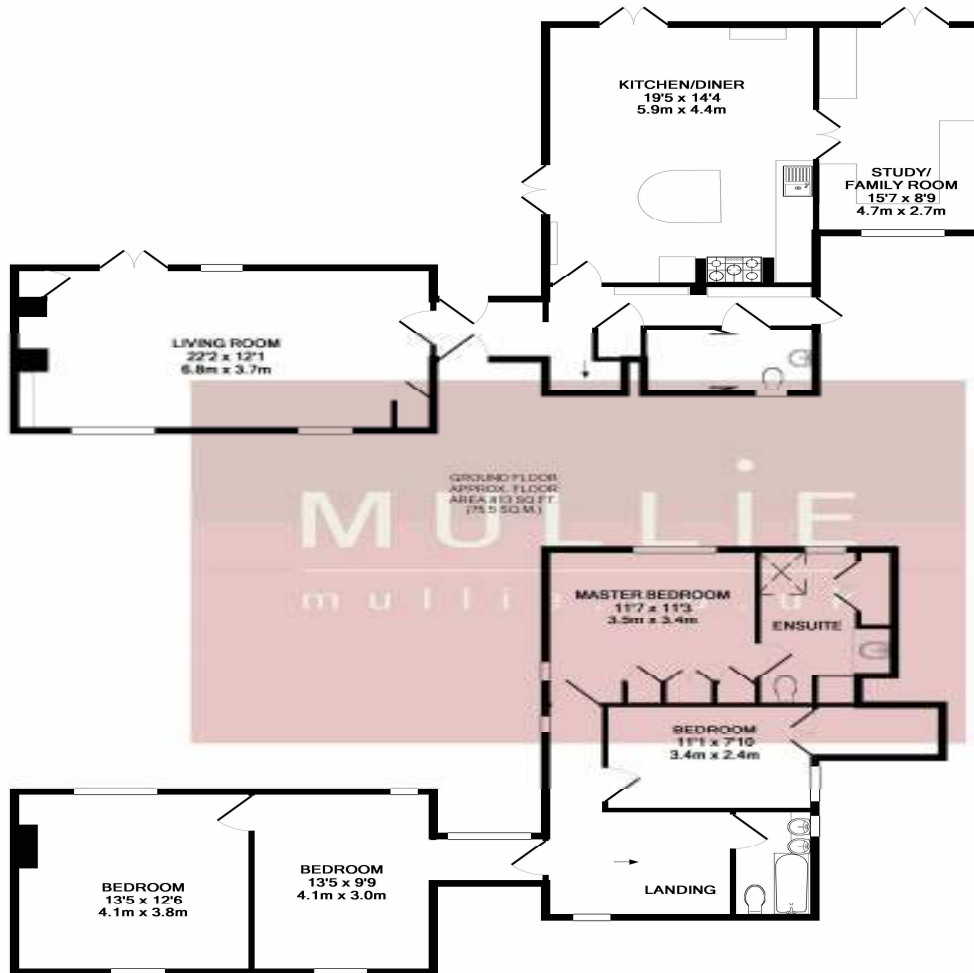




Hurst - Price Guide £850,000

A stunning 4-bedroom detached Grade II Listed thatched cottage offering light, spacious and beautifully presented living accommodation with an impressive triple-aspect kitchen with views of a heavenly South-West facing enclosed rear garden. This romantic family home has a beautiful en-suite shower room to the master bedroom, family bathroom, cloak/ utility room, generous living room, study and driveway parking. Conveniently located in a much sought-after semi-rural village, the property provides good access to excellent local schools, amenities and Mainline Stations in Twyford and Maidenhead. EPC band E.



GROUND FLOOR:
APPROX. FLOOR
AREA 813 SQ.FT.
(75.5 SQ.M.)

1ST FLOOR
APPROX. FLOOR
AREA 778 SQ.FT.
(72.2 SQ.M.)

TOTAL APPROX. FLOOR AREA 1590 SQ.FT. (147.7 SQ.M.)

Whilst every attempt has been made to ensure the accuracy of the floor plan contained here, measurements of doors, windows, rooms and any other items are approximate and no responsibility is taken for any error, omission, or mis-statement. This plan is for illustrative purposes only and should be used as such by any prospective purchaser. The services, systems and appliances shown have not been tested and no guarantee as to their operability or efficiency can be given.
Made with Metropix ©2018

Energy Efficiency Rating		Current	Potential
Very energy efficient - lower running costs			
(92-100)	A		
(81-91)	B		
(69-80)	C		
(55-68)	D		
(39-54)	E		
(21-38)	F		
(1-20)	G		
Not energy efficient - higher running costs			
England, Scotland & Wales		46	54
EU Directive 2002/91/EC			

Environmental Impact (CO ₂) Rating		Current	Potential
Very environmentally friendly - lower CO ₂ emissions			
(92-100)	A		
(81-91)	B		
(69-80)	C		
(55-68)	D		
(39-54)	E		
(21-38)	F		
(1-20)	G		
Not environmentally friendly - higher CO ₂ emissions			
England, Scotland & Wales		50	57
EU Directive 2002/91/EC			