



# The Longville

## 2 bedroom home

**Living/Dining**  
3.58m x 4.01m  
(11'9" x 13'2")

**Kitchen**  
3.46m x 1.90m  
(11'4" x 6'3")

**WC**  
1.71m x 0.97m  
(5'7" x 3'2")

**Bedroom 1**  
2.30m x 4.01m  
(7'7" x 13'2")

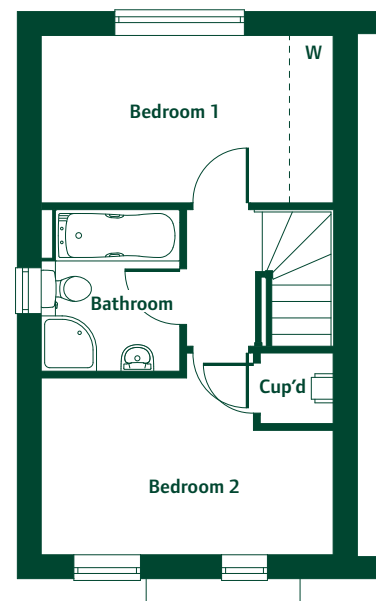
**Bedroom 2**  
2.43m x 4.01m  
(8'0" x 13'2")

**Bathroom**  
2.22m x 1.90m  
(7'3" x 6'3")

NB: All dimensions are maximum and may vary from plot to plot



GROUND FLOOR



FIRST FLOOR

Please note:  
Kitchen, cloakroom, utility, bathroom, en-suite and wardrobe layouts vary from one property to another. Please refer to your Sales Adviser for further details.

Illustration and plans show a typical house type. The house type may be built in a range of elevational finishes using a variety of materials. Floor plans and window positions may vary from plot to plot. False chimneys are applicable to selected plots only. This is because we operate a policy of continuous improvement and we work within the needs of the Planning Authorities. Please ask your Sales Adviser for precise details of the finish and specifications of your chosen home.



# The Findon

## 3 bedroom home

**Living Room**  
5.70m x 4.49m  
(18'9" x 14'9")

**Dining Room**  
3.14m x 2.77m  
(10'4" x 9'1")

**Kitchen**  
2.77m x 3.14m  
(9'1" x 10'4")

**WC**  
0.85m x 1.74m  
(2'10" x 5'9")

**Bedroom 1**  
3.35m x 3.14m  
(11'0" x 10'4")

**En-Suite**  
1.21m x 2.26m  
(4'0" x 7'5")

**Dressing Area**  
1.43m x 2.26m  
(4'8" x 7'5")

**Bedroom 2**  
2.80m x 3.11m  
(9'3" x 10'2")

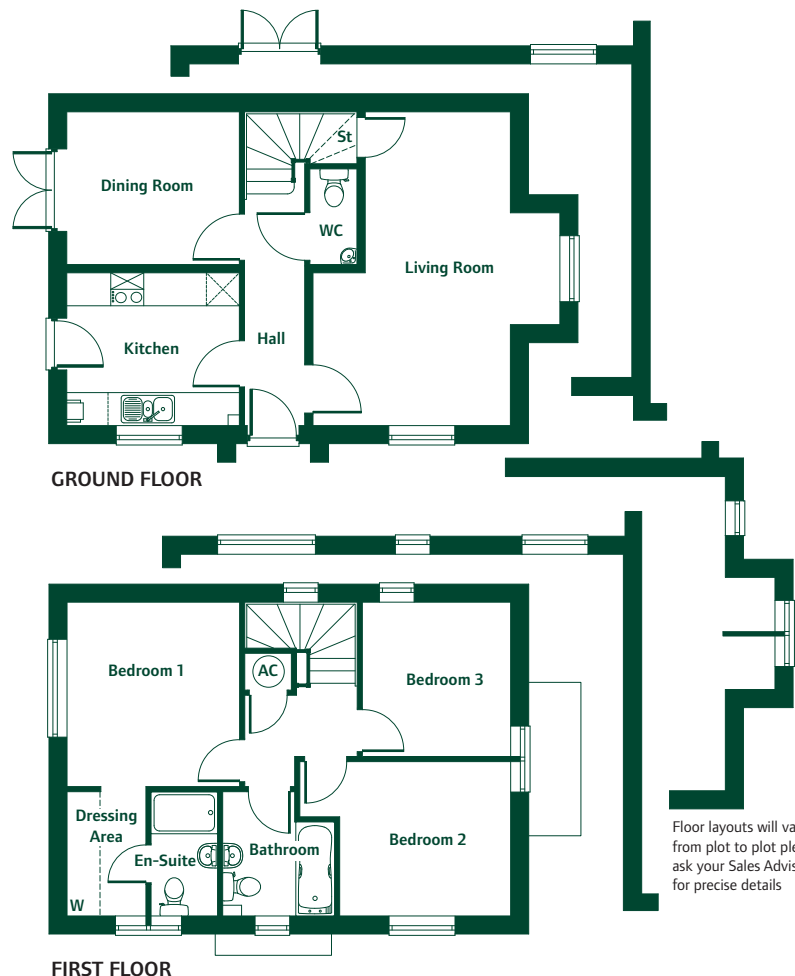
**Bedroom 3**  
2.80m x 2.69m  
(9'3" x 8'10")

**Bathroom**  
2.26m x 2.03m  
(7'5" x 6'8")

NB: All dimensions are maximum and may vary from plot to plot

Please note:  
Kitchen, cloakroom, utility, bathroom, en-suite and wardrobe layouts vary from one property to another. Please refer to your Sales Adviser for further details.

Illustration and plans show a typical house type. The house type may be built in a range of elevational finishes using a variety of materials. Floor plans and window positions may vary from plot to plot. False chimneys are applicable to selected plots only. This is because we operate a policy of continuous improvement and we work within the needs of the Planning Authorities. Please ask your Sales Adviser for precise details of the finish and specifications of your chosen home.



Floor layouts will vary from plot to plot please ask your Sales Adviser for precise details



# The Millwood

## 4 bedroom home

### Living Room

4.73m x 3.30m  
(15'6" x 10'10")

### Dining Room

3.45m x 2.85m  
(11'4" x 9'4")

### Kitchen

4.29m x 3.15m  
(14'1" x 10'4")

### WC

2.06m x 0.99m  
(6'9" x 3'3")

### Bedroom 1

4.14m x 3.29m  
(13'7" x 10'10")

### En-Suite

1.43m x 2.43m  
(4'8" x 8'0")

### Bedroom 2

3.19m x 3.29m  
(10'6" x 10'10")

### Bedroom 3

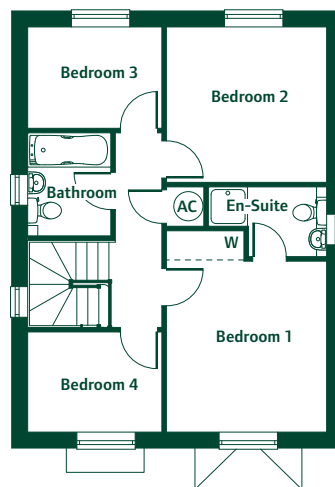
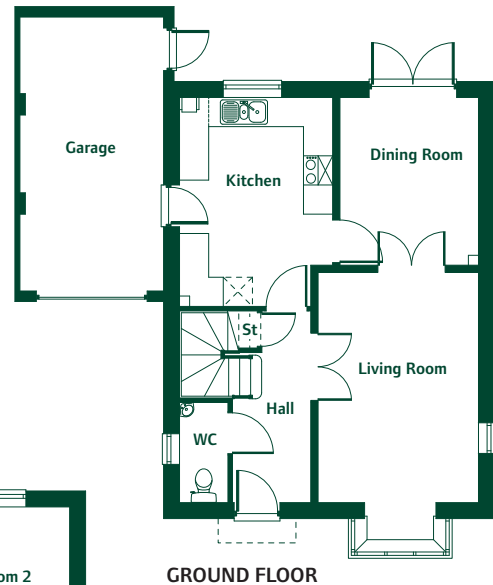
2.08m x 2.76m  
(6'10" x 9'1")

### Bedroom 4

2.06m x 2.76m  
(6'9" x 9'1")

### Bathroom

2.12m x 1.71m  
(6'1" x 5'7")



NB: All dimensions are maximum and may vary from plot to plot

**Please note:**

Kitchen, cloakroom, utility, bathroom, en-suite and wardrobe layouts vary from one property to another. Please refer to your Sales Adviser for further details.

Illustration and plans show a typical house type. The house type may be built in a range of elevational finishes using a variety of materials. Floor plans and window positions may vary from plot to plot. False chimneys are applicable to selected plots only. This is because we operate a policy of continuous improvement and we work within the needs of the Planning Authorities. Please ask your Sales Adviser for precise details of the finish and specifications of your chosen home.





# The Brockton

## 3 bedroom home

### Kitchen/Dining

4.61m x 2.73m  
(15'2" x 8'11")

### Living Room

3.61m x 4.87m  
(11'10" x 16'0")

### WC

1.71m x 0.91m  
(5'7" x 3'0")

### Bedroom 1

3.46m x 2.44m  
(11'4" x 8'0")

### En-Suite

1.05m x 2.12m  
(3'5" x 7'0")

### Bedroom 2

2.37m x 2.63m  
(7'9" x 8'8")

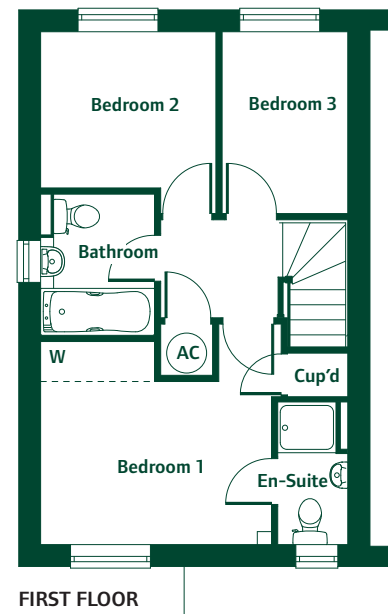
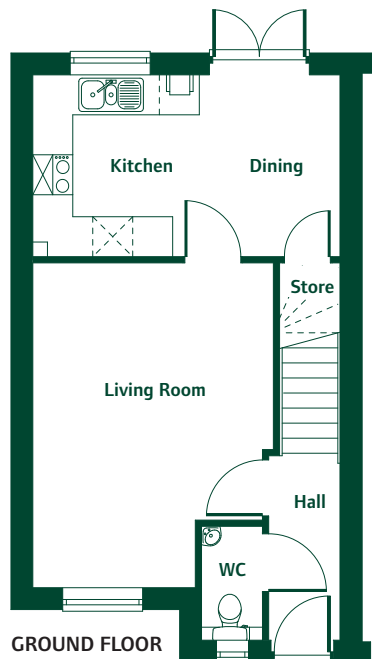
### Bedroom 3

1.88m x 2.73m  
(6'2" x 8'11")

### Bathroom

1.71m x 2.12m  
(5'7" x 6'11")

NB: All dimensions are maximum and may vary from plot to plot



#### Please note:

Kitchen, cloakroom, utility, bathroom, en-suite and wardrobe layouts vary from one property to another. Please refer to your Sales Adviser for further details.

Illustration and plans show a typical house type. The house type may be built in a range of elevational finishes using a variety of materials. Floor plans and window positions may vary from plot to plot. False chimneys are applicable to selected plots only. This is because we operate a policy of continuous improvement and we work within the needs of the Planning Authorities. Please ask your Sales Adviser for precise details of the finish and specifications of your chosen home.