



MARYLEBONE ROAD, MARYLEBONE
Asking price £1,949,999

MARYLEBONE ROAD, MARYLEBONE

SPACIOUS THREE BEDROOM APARTMENT in Marylebone. A luxurious, 1500 sq.ft apartment with abundant living and entertaining space located in this prestigious and sought-after period block, In arguably one of the best positions in London. The location is ideal for access to Baker Street underground station, Marylebone mainline rail station, the open spaces of Regent's Park, and is also within a short walk from the shopping and other attractions of Oxford Street and Bond Street.

Hall

Storage cupboard,

Reception

32'6 x 12'4 (9.91m x 3.76m)

T.V and phone points, sash window to front and side aspect, down lights, three double radiators, storage cupboard and wooden floor.

Kitchen

20' x 11'6 (6.10m x 3.51m)

Integrated electric oven and hob with up and over extractor fan, radiator, selection of wall and base units, T.V point, two sash windows to front aspect, sink with mixer tap and drainer, down-lights, plumbing for washing machine and dishwasher.

Bedroom

16'6 x 14'1 (5.03m x 4.29m)

Fitted wardrobes, T.V and phone points, radiator and two sash windows to front aspect.

Bedroom

16'6 x 9'1 (5.03m x 2.77m)

Fitted wardrobe, sash window to front aspect, T.V and phone points.

Bedroom

12'8 x 10'1 (3.86m x 3.07m)

Double radiator, fitted wardrobes, radiator sash window to front aspect, T.V and phone point.

Bathroom

7'11 x 6'5 (2.41m x 1.96m)

Tiled walls and floor, heated towel rail, bath with mixer tap and overhead shower, wash basin with mixer tap and W.C.

En Suite Bathroom

12'10 x 10'2 (3.91m x 3.10m)

Tiled floor and splash area's, bath with mixer tap and overhead shower attachment, wash basin and heated towel rail.

W,C.

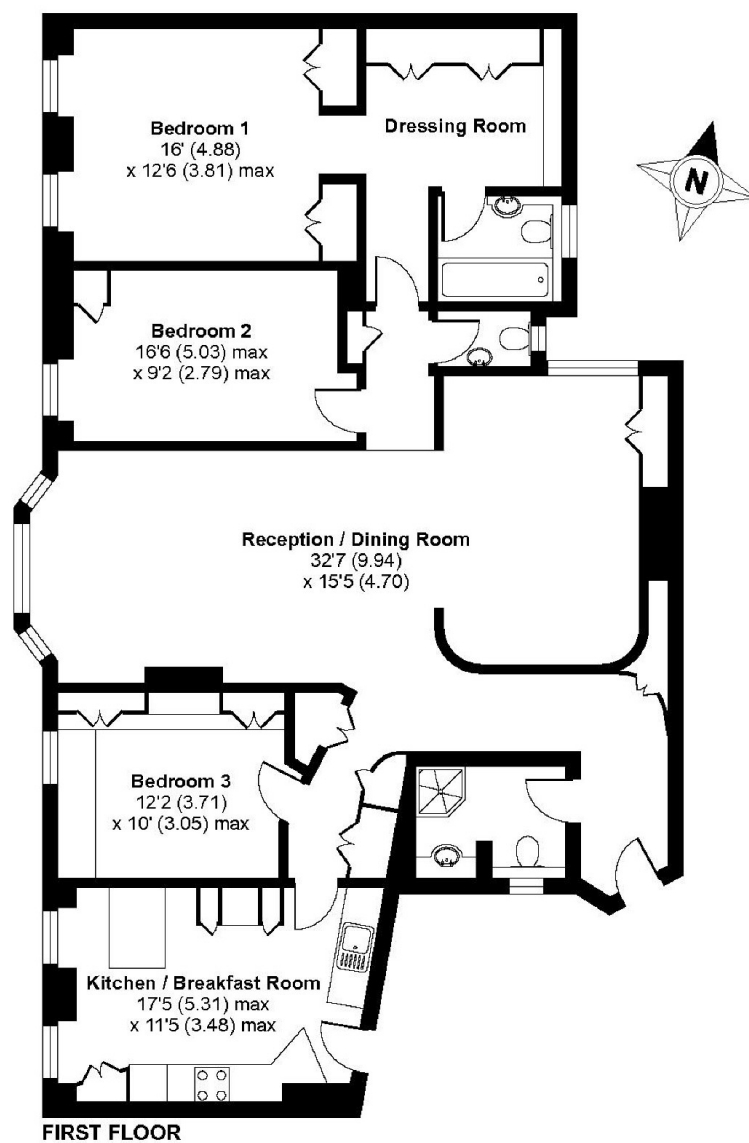
W.C and casement window to rear aspect.



ASKING PRICE £1,949,999

Berkeley Court, Marylebone Road, London, NW1

APPROX. GROSS INTERNAL FLOOR AREA 1588 SQ FT 147.52 SQ METRES



Whilst every attempt has been made to ensure the accuracy of the floor plan contained here, measurements of doors, windows and rooms are approximate and no responsibility is taken for any error, omission or misstatement. These plans are for representation purposes only as defined by RICS Code of Measuring Practice and should be used as such by any prospective purchaser. Specifically no guarantee is given on the total square footage of the property if quoted on this plan. Any figure given is for initial guidance only and should not be relied on as a basis of valuation.

Copyright nichecom.co.uk 2013 Produced for Victorstone REF : 413990

