

FOXGREGORY

Hamilton Terrace, St. John's Wood, NW8



HAMILTON TERRACE ST. JOHN'S WOOD, NW8

A rare opportunity to acquire this elegant 4 bedroom family sized duplex apartment situated on the Western side of St. John's Wood's premier residential Boulevard. Arranged over ground and raised ground floor, this bright, spacious and airy property benefits from a delightful and private 85' South West facing rear garden.

ACCOMMODATION

Master Bedroom with En-suite Bathroom & Dressing Room, 3 further Bedrooms (2 en-suite), Family Bathroom, 2 large Reception Rooms, Kitchen Breakfast Room, Conservatory/Dining Room, Guest W.C. Utility Room, Conservatory/Garden Games Room

AMENITIES

85' South West facing private rear garden and balcony.

TERMS

Tenure: Commonhold (Freehold)

LOCAL AUTHORITY

London Borough of Westminster

PRICE UPON APPLICATION

SOLE AGENT

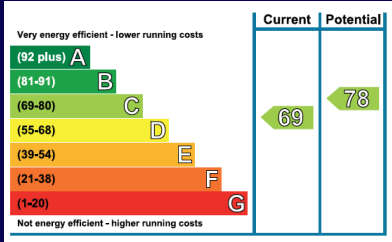




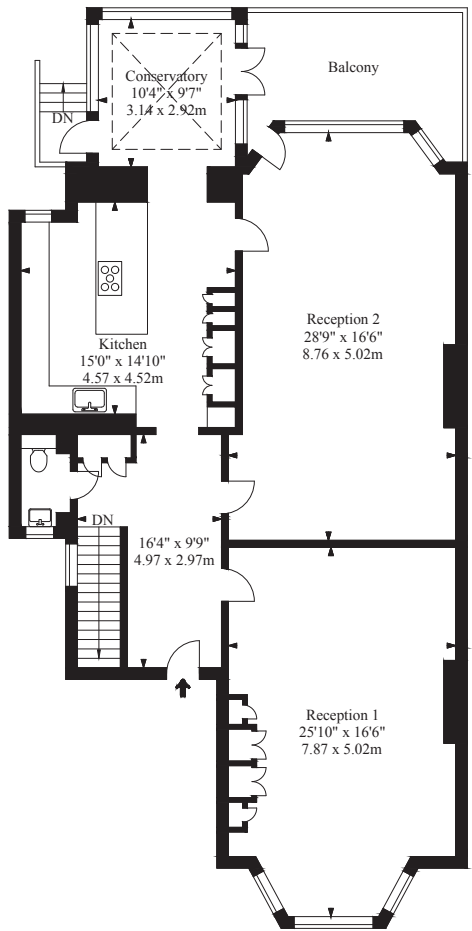
102 Allitsen Road, London NW8 7AY
020 7586 1500
enquiries@foxgregory.co.uk
foxgregory.co.uk

IMPORTANT NOTICE

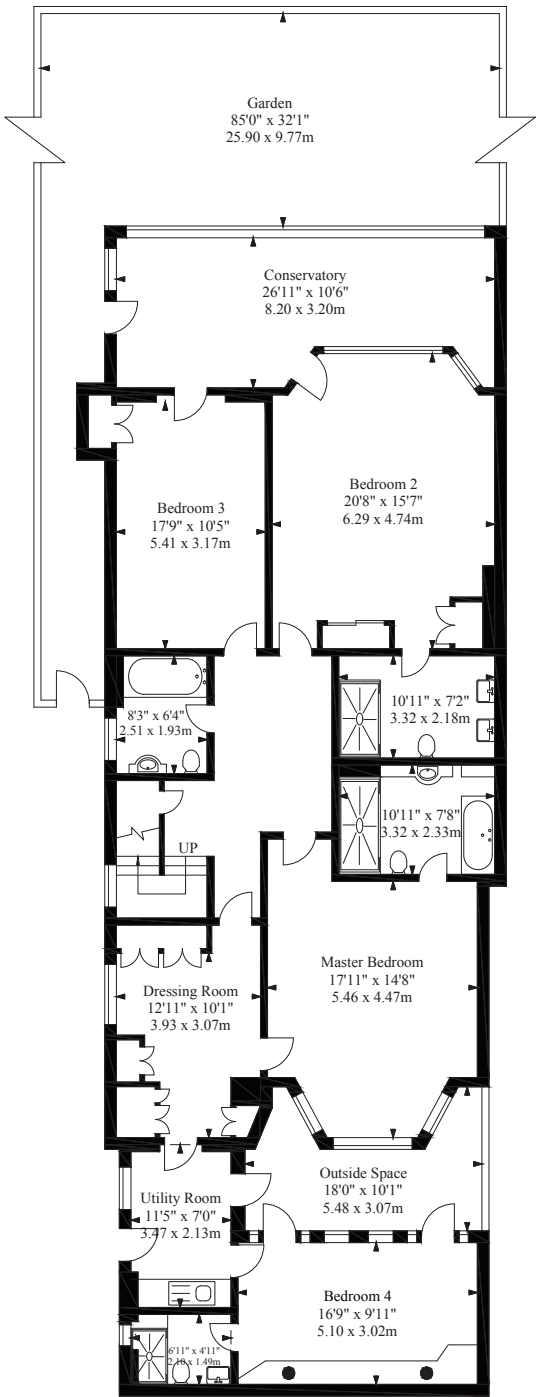
1. Particulars: These particulars are not an offer or contract, nor part of one. You should not rely on statements by Fox Gregory in the particulars or by word of mouth or in writing ("information") as being factually accurate about the property, its condition or its value. Fox Gregory has no authority to make any representations about the property, and accordingly any information given is entirely without responsibility on the part of the agents, seller(s) or lessor(s). 2. Photos etc: The photographs show only certain parts of the property as they appeared at the time they were taken. Areas, measurements and distances given are approximate only. 3. Regulations etc: Any reference to alterations to, or use of, any part of the property does not mean that any necessary planning, building regulations or other consent has been obtained. A buyer or lessee must find out by inspection or in other ways that these matters have been properly dealt with and that all information is correct. 4. We have not carried out a survey and the services and appliances have not been tested.



Hamilton Terrace
Approx. Gross Internal Area
3290 Ft² - 305.68 M²



Raised Ground Floor



Lower Ground Floor

Illustration For Identification Purposes Only. Not To Scale