

Poplar Grove New Malden KT3



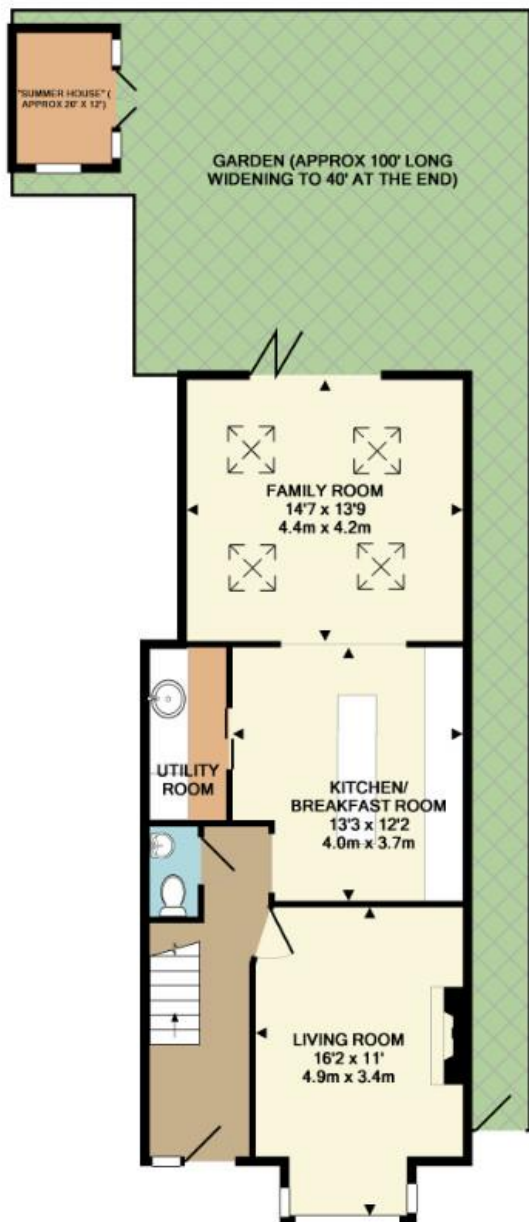
- **100` West Facing Rear Garden**
- **Fantastic Kitchen/Family Room**
- **Four Bedrooms. Two Bathrooms**
- **Parking. No Onward Chain**

Price £895,000

Set within the very popular "Groves" area, this handsome, semi-detached period home is beautifully presented throughout and is offered for sale with no onward chain. The house has been extended and the accommodation now comprises a bay-fronted living room to the front with period fireplace, a large kitchen/family room with a separate utility room and open through to a wonderful family room, cloakroom, four good size bedrooms, a family bathroom and a wonderful en-suite bathroom. One of the main features is the fantastic 100` west facing rear garden and the last 30` widens to approx 40` and there is a large "summer house" and both side and rear access as well as off-street parking to the front. EPC rating E. This home is an absolute must-see and viewings are highly recommended.







TOTAL APPROX. FLOOR AREA 1481 SQ.FT. (137.6 SQ.M.)

Whilst every attempt has been made to ensure the accuracy of the floor plan contained here, measurements of doors, windows, rooms and any other items are approximate and no responsibility is taken for any error, omission, or mis-statement. This plan is for illustrative purposes only and should be used as such by any prospective purchaser. The services, systems and appliances shown have not been tested and no guarantee as to their operability or efficiency can be given.

Made with Metropix ©2017

