

Poplar Grove New Malden KT3

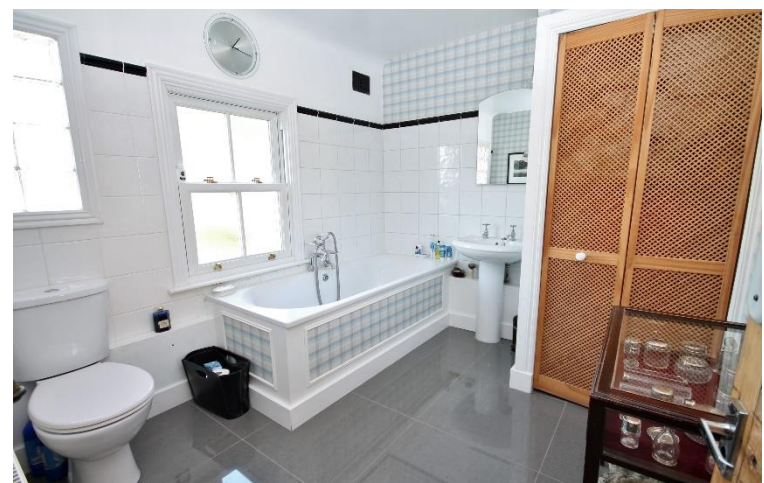


- **Five Bedroom Double Fronted Home**
- **Very Spacious Living Accommodation**
- **Good Size Attractive Rear Garden**
- **Off-Street Parking for Several Cars**

Price £1,495,000

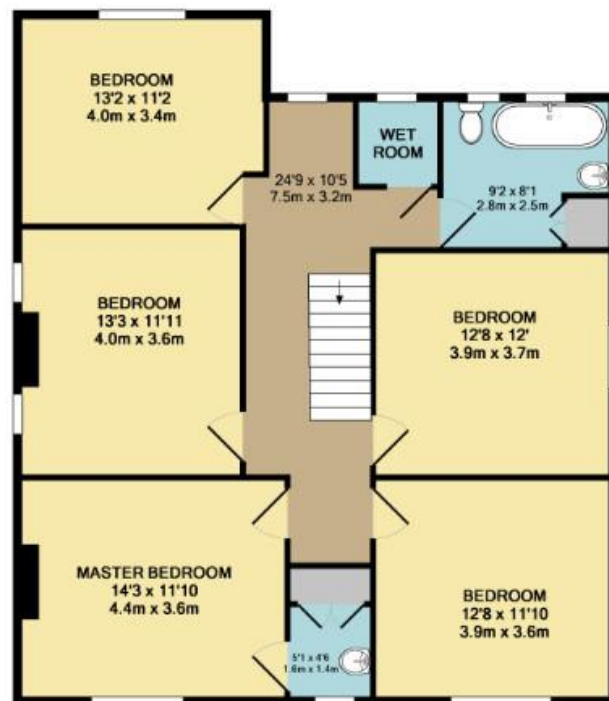
Set within the very popular "Groves" area of New Malden, a handsome, double fronted Victorian home offering a wealth of features and character. Set over two floors, the property boasts fantastic living space; the ground floor comprises a double reception room, a fitted kitchen which opens to a large dining area on one side and a comfortable sitting room at the rear with double doors opening out to the garden. There is also a large study, cloakroom and a utility room and a cellar useful for storage. Upstairs there is a master bedroom with en-suite dressing room, four further double bedrooms, a large family bathroom and a separate wet room. The mature rear garden is beautifully laid out and there is off-street parking for at least four cars to the front. There is also a large area to one side of the house which could be used to build on (subject to planning). EPC rating E. Many of the local amenities are very close at hand, including the station, High Street and excellent schools; properties like this come to the market very rarely and as such viewings are highly recommended.







GROUND FLOOR



1ST FLOOR

TOTAL APPROX. FLOOR AREA 2519 SQ.FT. (234.0 SQ.M.)

Whilst every attempt has been made to ensure the accuracy of the floor plan contained here, measurements of doors, windows, rooms and any other items are approximate and no responsibility is taken for any error, omission, or mis-statement. This plan is for illustrative purposes only and should be used as such by any prospective purchaser. The services, systems and appliances shown have not been tested and no guarantee as to their operability or efficiency can be given.

Made with Metropoli ©2017