



**Peach** properties

**Principal Tower, Shoreditch, EC2A**

- 1 Bedroom Apartment
- 7th Floor
- 50 Story Development
- Residents Gymnasium

**Asking Price Of £780,000**

EPC Rating '60'





## Property Description

Off plan re sale 1 bedroom apartment spread over 545sqf set on the 7th floor within a luxury 50 story development located moments from Liverpool Street Station.

Fully designed by renowned architects Foster And Partners, Principal Tower features a 24 hour concierge service, residents gymnasium, swimming pool, sauna, jacuzzi and steam room as well as a residents lounge, bar and screening room.

Located just a few moments from Liverpool Street Station with an array of boutiques, bars and restaurants of Bishops Gate, Shoreditch and Brick Lane all on your doorstep as well as easy access to Shoreditch High Street and Old Street Stations.

Please contact us for full brochure and further details.

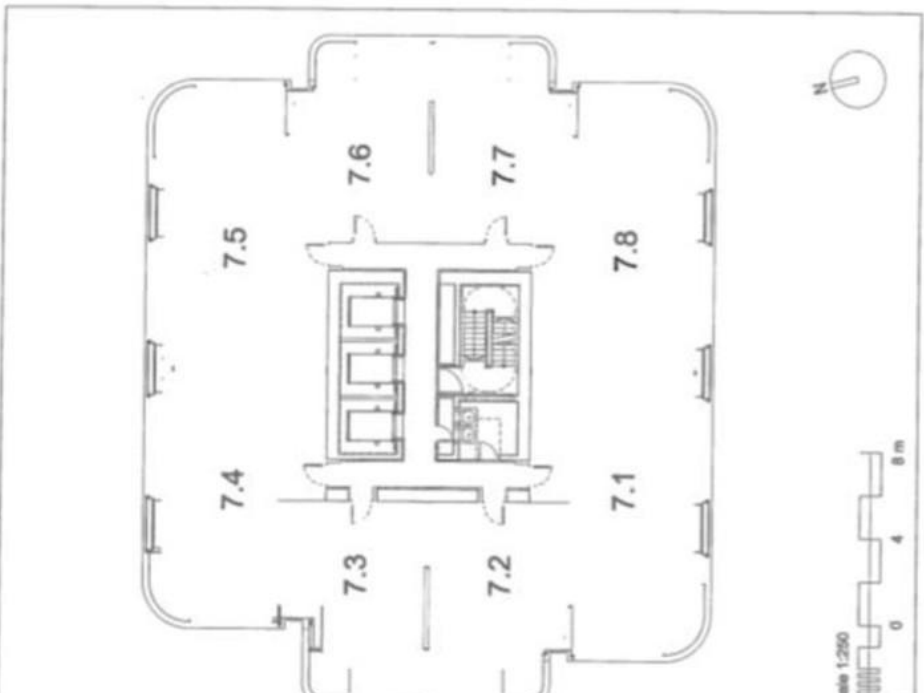
Due for completion March/April 2019.







PRINCIPAL TOWER  
 Date of Creation : 18/07/14  
 Author : Foster + Partners  
 Version : 00  
 Scale 1:1250 @ A4  
 Estate Boundary  
 Principal Tower



Level 07  
 Scale 1:250 @ A4  
 Inset Demise  
 Plan  
 1.9.2014

Energy Efficiency Rating		Current	Potential
Very energy efficient - lower running costs			
(92-100)	<b>A</b>		
(81-91)	<b>B</b>		
(69-80)	<b>C</b>		
(55-68)	<b>D</b>		
(39-54)	<b>E</b>		
(21-38)	<b>F</b>		
(1-20)	<b>G</b>		
Not energy efficient - higher running costs			
England & Wales		EU Directive 2002/91/EC	

Environmental Impact (CO <sub>2</sub> ) Rating		Current	Potential
Very environmentally friendly - lower CO <sub>2</sub> emissions			
(92-100)	<b>A</b>		
(81-91)	<b>B</b>		
(69-80)	<b>C</b>		
(55-68)	<b>D</b>		
(39-54)	<b>E</b>		
(21-38)	<b>F</b>		
(1-20)	<b>G</b>		
Not environmentally friendly - higher CO <sub>2</sub> emissions			
England & Wales		EU Directive 2002/91/EC	

Important Notice 1. Particulars: These particulars are not an offer or contract, nor part of one. You should not rely on statements by Peach Properties (UK) Ltd in the particulars or by word of mouth or in writing ("information") as being factually accurate about the property, its condition or its value. Neither Peach Properties (UK) Ltd nor any joint agent has any authority to make any representations about the property, and accordingly any information given is entirely without responsibility on the part of the agents, seller(s) or lessor(s). 2. Photos etc: The photographs show only certain parts of the property as they appeared at the time they were taken. Areas, measurements and distances given are approximate only. 3. Regulations etc: Any reference to alterations to, or use of, any part of the property does not mean that any necessary planning, building regulations or other consent has been obtained. A buyer or lessee must find out by inspection or in other ways that these matters have been properly dealt with and that all information is correct. 4. VAT: The VAT position relating to the property may change without notice. Particulars dated April 2016. Photographs dated April 2016. Peach Properties (UK) Ltd, Registered in England and Wales, Company Registration No. 06755175, Registered office, 53 Bethnal Green Road, London, E1 6LA.

53 Bethnal Green Road  
 Shoreditch  
 London  
 E1 6LA

www.peachproperties.com  
 info@peachproperties.com  
 0207 739 6969