
Floor plans and
specification

Book 1



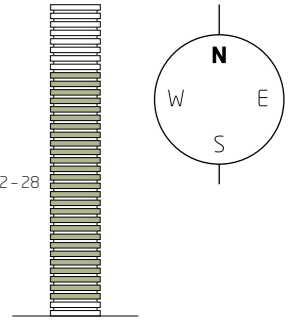
One
The Elephant

Site map

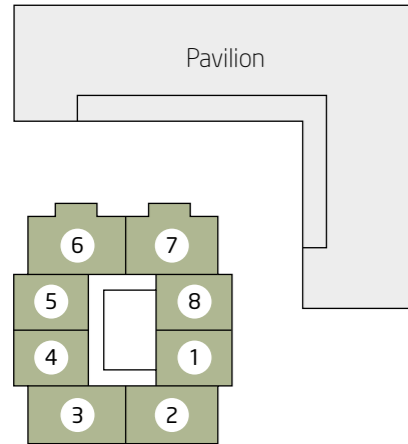


Disclaimer
The information in this document is indicative and is intended to act as a guide only as to the finished product. These particulars should not be relied upon as accurately describing any of the specific matters described by any order under the Property Misdescriptions Act 1991. This information does not constitute a contract, or warranty. The dimensions given on plans are subject to minor variations and are not intended to be used for carpet sizes, appliance sizes or items of furniture. There may be variations of balconies, terraces and windows depending on the apartment locations. See back page for full disclaimer. FEBRUARY 2014

Tower Floors 2-28



Key to apartment number



Apartment 3

Number of bedrooms	2
Internal Area	75.9 sqm - 817 sqft
Living / Dining / Kitchen	5.3m x 5.2m 17'5" x 17'1"ft
Master Bedroom	3.4m x 3.3m 11'2" x 10'10"ft
Bedroom 2	4.5m x 2.8m 14'9" x 9'2"ft
Balcony	5.5m x 1.5m 18'1" x 4'11"ft

Apartment 6

Number of bedrooms	2
Internal Area	81.2 sqm - 874 sqft
Living / Dining / Kitchen	8.0m x 3.5m 26'3" x 11'6"ft
Master Bedroom	5.2m x 2.8m 17'1" x 9'2"ft
Bedroom 2	4.5m x 2.8m 14'9" x 9'2"ft
Balcony	5.1m x 1.5m 16'9" x 4'11"ft

Apartment 1

Number of bedrooms	1
Internal Area	51.9 sqm - 559 sqft
Living / Dining / Kitchen	6.8m x 3.5m 22'4" x 11'6"ft
Bedroom	5.0m x 2.8m 16'5" x 9'2"ft
Balcony	2.7m x 1.7m 8'10" x 5'7"ft

Apartment 4

Number of bedrooms	1
Internal Area	53.7 sqm - 578 sqft
Living / Dining / Kitchen	6.8m x 3.5m 22'4" x 11'6"ft
Bedroom	5.0m x 2.8m 16'5" x 9'2"ft
Balcony	2.7m x 1.7m 8'10" x 5'7"ft

Apartment 7

Number of bedrooms	2
Internal Area	81.4 sqm - 876 sqft
Living / Dining / Kitchen	8.0m x 3.5m 26'3" x 11'6"ft
Master Bedroom	5.2m x 2.8m 17'1" x 9'2"ft
Bedroom 2	4.5m x 2.8m 14'9" x 9'2"ft
Balcony	5.1m x 1.5m 16'9" x 4'11"ft

Apartment 2

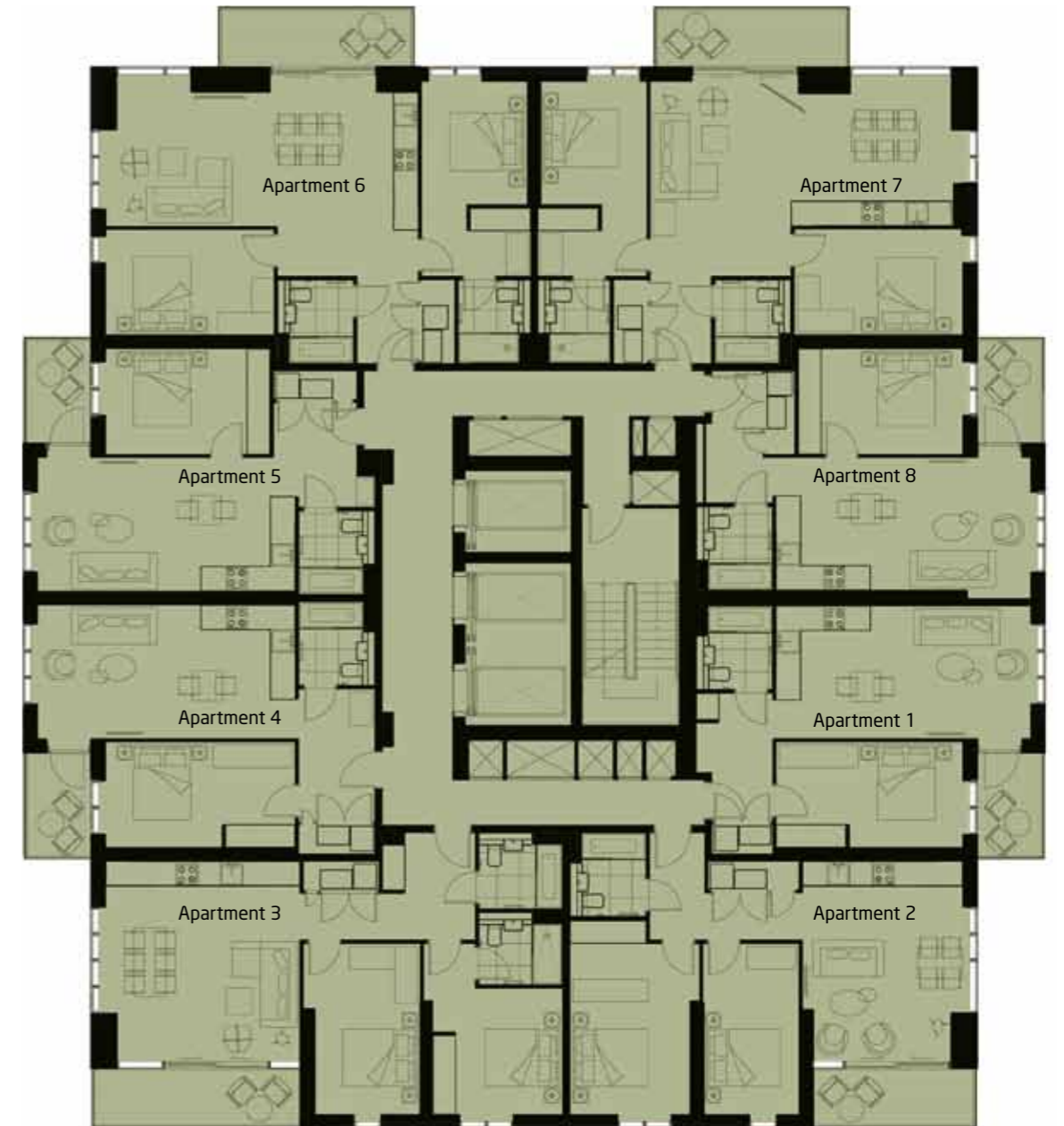
Number of bedrooms	2
Internal Area	65.4 sqm - 704 sqft
Living / Dining / Kitchen	5.3m x 4.3m 17'5" x 14'1"ft
Master Bedroom	5.2m x 3.2m 17'1" x 10'6"ft
Bedroom 2	4.5m x 2.5m 14'9" x 8'2"ft
Balcony	4.3m x 1.5m 14'1" x 4'11"ft

Apartment 5

Number of bedrooms	1
Internal Area	50.3 sqm - 542 sqft
Living / Dining / Kitchen	6.8m x 3.5m 22'4" x 11'6"ft
Bedroom	4.4m x 2.8m 14'5" x 9'2"ft
Balcony	2.7m x 1.7m 8'10" x 5'7"ft

Apartment 8

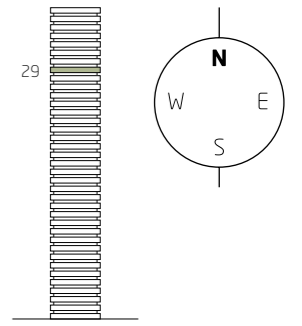
Number of bedrooms	1
Internal Area	50.1 sqm - 539 sqft
Living / Dining / Kitchen	6.8m x 3.5m 22'4" x 11'6"ft
Bedroom	4.3m x 2.8m 14'1" x 9'2"ft
Balcony	2.7m x 1.7m 8'10" x 5'7"ft



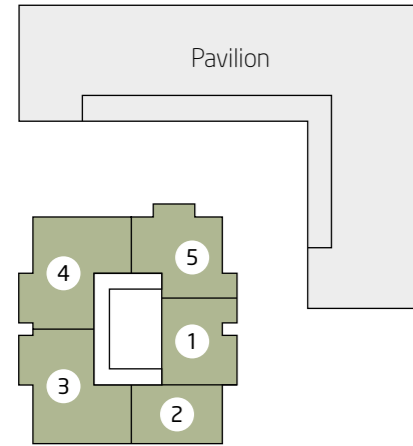
Disclaimer

The information in this document is indicative and is intended to act as a guide only as to the finished product. These particulars should not be relied upon as accurately describing any of the specific matters described by any order under the Property Misdescriptions Act 1991. This information does not constitute a contract, or warranty. The dimensions given on plans are subject to minor variations and are not intended to be used for carpet sizes, appliance sizes or items of furniture. There may be variations of balconies, terraces and windows depending on the apartment locations. See back page for full disclaimer. FEBRUARY 2014

Tower Floor 29



Key to apartment number



Apartment 1

Number of bedrooms	2
Internal Area	74.2 sqm - 799 sqft
Living / Dining / Kitchen	7.1m x 4.8m 23'4" x 15'9"ft
Master Bedroom	5.0m x 2.8m 16'5" x 9'2"ft
Bedroom 2	3.6m x 2.5m 11'10" x 8'2"ft
Balcony 1	3.0m x 1.7m 9'10" x 5'7"ft
Balcony 2	6.1m x 1.7m 20'0" x 5'7"ft

Apartment 2

Number of bedrooms	2
Internal Area	74.8 sqm - 805 sqft
Living / Dining / Kitchen	5.1m x 5.0m 16'9" x 16'5"ft
Master Bedroom	3.4m x 3.3m 11'2" x 10'10"ft
Bedroom 2	4.6m x 2.8m 15'1" x 9'2"ft
Balcony	4.3m x 1.5m 14'1" x 4'11"ft

Apartment 3

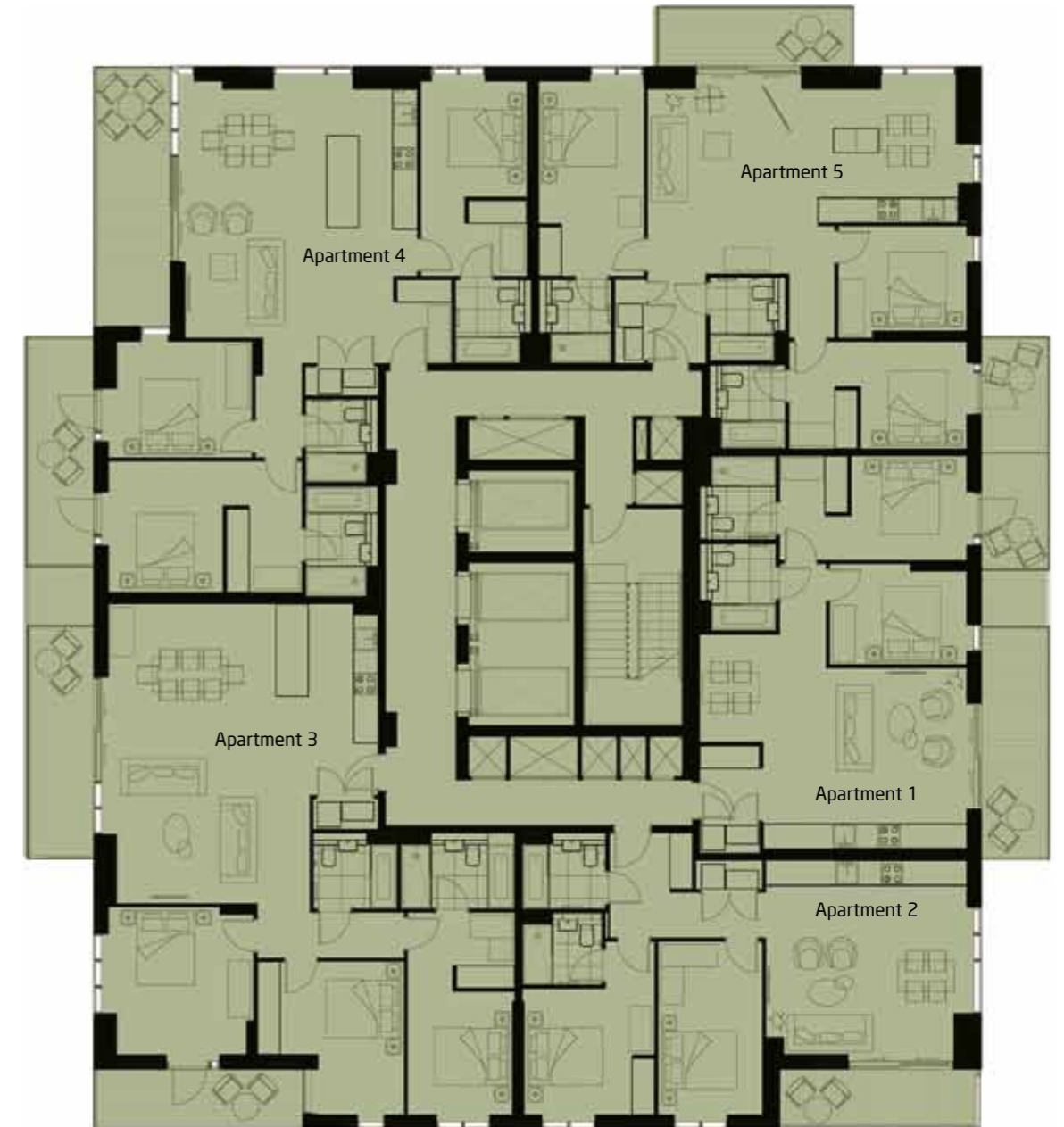
Number of bedrooms	3
Internal Area	115.9 sqm - 1248 sqft
Living / Dining / Kitchen	7.9m x 7.1m 25'11" x 23'4"ft
Master Bedroom	5.4m x 2.8m 17'9" x 9'2"ft
Bedroom 2	4.1m x 3.9m 13'5" x 12'10"ft
Bedroom 3	3.9m x 3.4m 12'10" x 11'2"ft
Balcony 1	6.1m x 1.7m 20'0" x 5'7"ft
Balcony 2	5.5m x 1.5m 18'1" x 4'11"ft

Apartment 4

Number of bedrooms	3
Internal Area	114.0 sqm - 1227 sqft
Living / Dining / Kitchen	6.6m x 6.2m 21'8" x 20'4"ft
Master Bedroom	5.1m x 3.5m 16'9" x 11'6"ft
Bedroom 2	5.2m x 2.8m 17'1" x 9'2"ft
Bedroom 3	3.6m x 3.1m 11'10" x 10'2"ft
Balcony 1	6.8m x 1.9m 22'4" x 6'3"ft
Balcony 2	6.1m x 1.7m 20'0" x 5'7"ft

Apartment 5

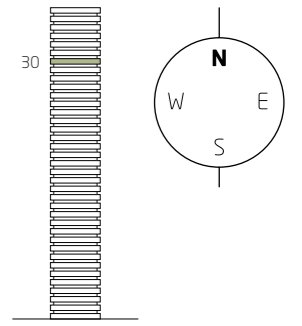
Number of bedrooms	3
Internal Area	99.8 sqm - 1074 sqft
Living / Dining / Kitchen	8.2m x 4.9m 26'11" x 16'1"ft
Master Bedroom	5.2m x 2.8m 17'1" x 9'2"ft
Bedroom 2	4.7m x 2.8m 15'5" x 9'2"ft
Bedroom 3	3.4m x 2.8m 11'2" x 9'2"ft
Balcony 1	5.1m x 1.5m 16'9" x 4'11"ft
Balcony 2	3.0m x 1.7m 9'10" x 5'7"ft



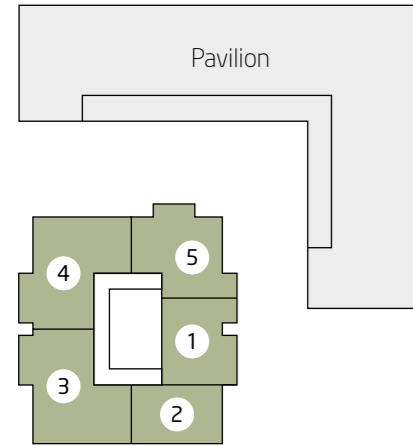
Disclaimer

The information in this document is indicative and is intended to act as a guide only as to the finished product. These particulars should not be relied upon as accurately describing any of the specific matters described by any order under the Property Misdescriptions Act 1991. This information does not constitute a contract, or warranty. The dimensions given on plans are subject to minor variations and are not intended to be used for carpet sizes, appliance sizes or items of furniture. There may be variations of balconies, terraces and windows depending on the apartment locations. See back page for full disclaimer. FEBRUARY 2014

Tower Floor 30



Key to apartment number



Apartment 1

Number of bedrooms	2	
Internal Area	74.2 sqm - 799 sqft	
Living / Dining / Kitchen	7.1m x 4.8m	23'4" x 15'9"ft
Master Bedroom	5.0m x 2.8m	16'5" x 9'2"ft
Bedroom 2	3.6m x 2.5m	11'10" x 8'2"ft
Balcony 1	3.0m x 1.7m	9'10" x 5'7"ft
Balcony 2	6.1m x 1.7m	20'0" x 5'7"ft

Apartment 2

Number of bedrooms	2	
Internal Area	74.8 sqm - 805 sqft	
Living / Dining / Kitchen	5.1m x 5.0m	16'9" x 16'5"ft
Master Bedroom	3.4m x 3.3m	11'2" x 10'10"ft
Bedroom 2	4.6m x 2.8m	15'1" x 9'2"ft
Balcony	4.3m x 1.5m	14'1" x 4'11"ft

Apartment 3

Number of bedrooms	3	
Internal Area	115.9 sqm - 1248 sqft	
Living / Dining / Kitchen	7.9m x 7.1m	25'11" x 23'4"ft
Master Bedroom	5.4m x 2.8m	17'9" x 9'2"ft
Bedroom 2	4.1m x 3.9m	13'5" x 12'10"ft
Bedroom 3	3.9m x 3.4m	12'10" x 11'2"ft
Balcony 1	6.1m x 1.7m	20'0" x 5'7"ft
Balcony 2	5.5m x 1.5m	18'1" x 4'11"ft

Apartment 4

Number of bedrooms	3	
Internal Area	114.0 sqm - 1227 sqft	
Living / Dining / Kitchen	6.6m x 6.2m	21'8" x 20'4"ft
Master Bedroom	5.1m x 3.5m	16'9" x 11'6"ft
Bedroom 2	5.2m x 2.8m	17'1" x 9'2"ft
Bedroom 3	3.6m x 3.1m	11'10" x 10'2"ft
Balcony 1	6.8m x 1.9m	22'4" x 6'3"ft
Balcony 2	6.1m x 1.7m	20'0" x 5'7"ft

Apartment 5

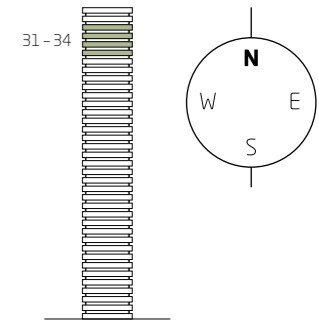
Number of bedrooms	3	
Internal Area	99.8 sqm - 1074 sqft	
Living / Dining / Kitchen	8.2m x 4.9m	26'11" x 16'1"ft
Master Bedroom	5.2m x 2.8m	17'1" x 9'2"ft
Bedroom 2	4.7m x 2.8m	15'5" x 9'2"ft
Bedroom 3	3.4m x 2.8m	11'2" x 9'2"ft
Balcony 1	5.1m x 1.5m	16'9" x 4'11"ft
Balcony 2	3.0m x 1.7m	9'10" x 5'7"ft



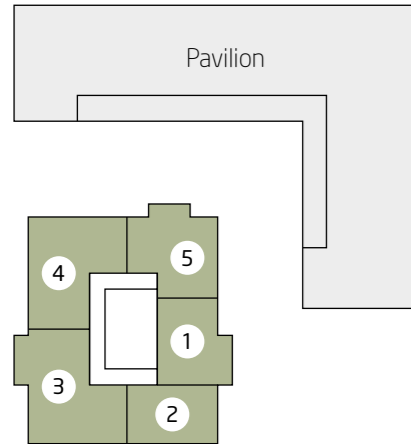
Disclaimer

The information in this document is indicative and is intended to act as a guide only as to the finished product. These particulars should not be relied upon as accurately describing any of the specific matters described by any order under the Property Misdescriptions Act 1991. This information does not constitute a contract, or warranty. The dimensions given on plans are subject to minor variations and are not intended to be used for carpet sizes, appliance sizes or items of furniture. There may be variations of balconies, terraces and windows depending on the apartment locations. See back page for full disclaimer. FEBRUARY 2014

Tower Floors 31 - 34



Key to apartment number



Apartment 1

Number of bedrooms	2	
Internal Area	74.2 sqm - 799 sqft	
Living / Dining / Kitchen	7.1m x 4.8m	23'4" x 15'9"ft
Master Bedroom	5.0m x 2.8m	16'5" x 9'2"ft
Bedroom 2	3.6m x 2.5m	11'10" x 8'2"ft
Balcony	6.1m x 1.7m	20'0" x 5'7"ft

Apartment 2

Number of bedrooms	2	
Internal Area	74.8 sqm - 805 sqft	
Living / Dining / Kitchen	5.1m x 5.0m	16'9" x 16'5"ft
Master Bedroom	3.4m x 3.3m	11'2" x 10'10"ft
Bedroom 2	4.6m x 2.8m	15'1" x 9'2"ft
Balcony	4.3m x 1.5m	14'1" x 4'11"ft

Apartment 3

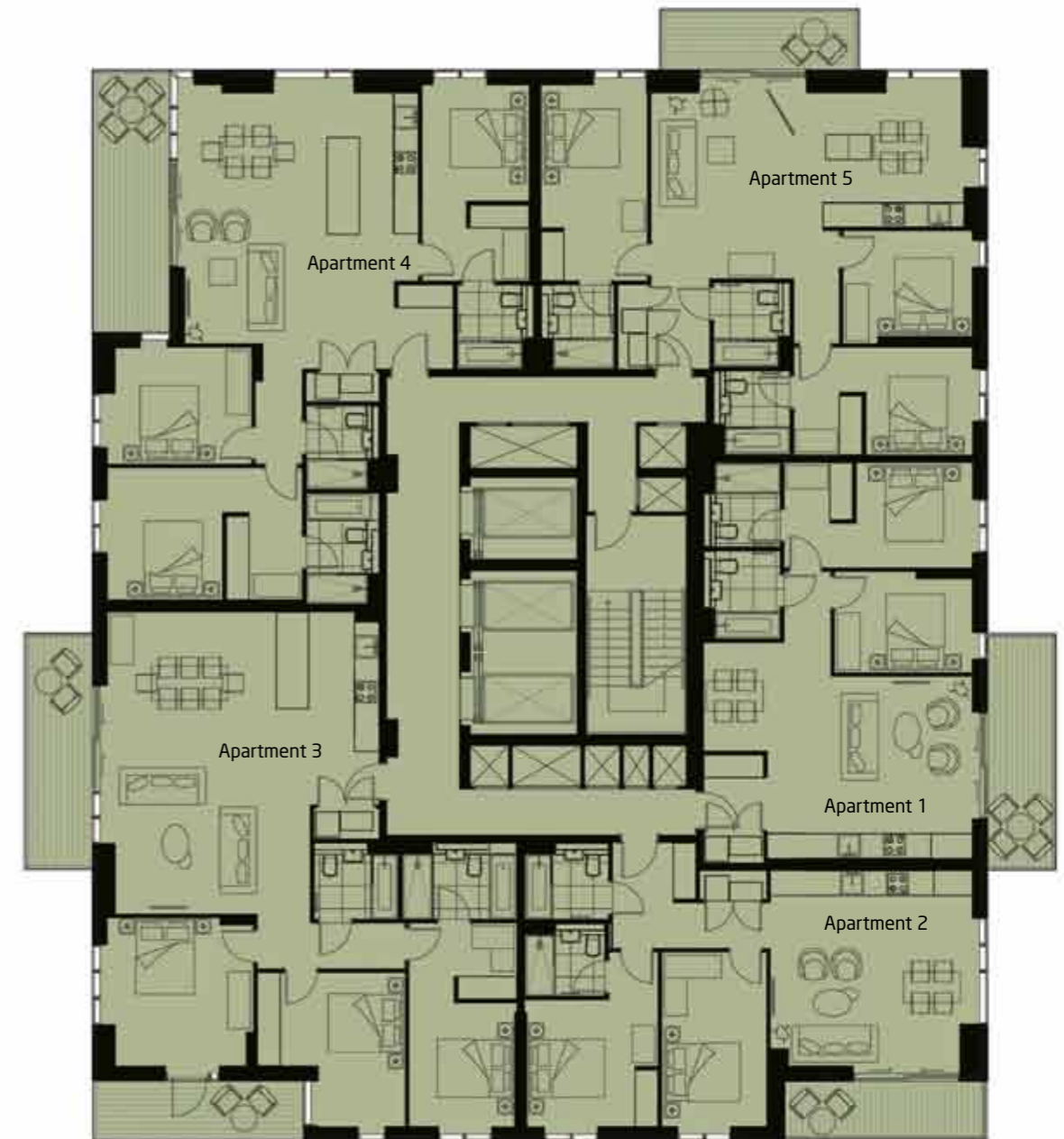
Number of bedrooms	3	
Internal Area	115.9 sqm - 1248 sqft	
Living / Dining / Kitchen	7.9m x 7.1m	25'11" x 23'4"ft
Master Bedroom	5.4m x 2.8m	17'9" x 9'2"ft
Bedroom 2	4.1m x 3.9m	13'5" x 12'10"ft
Bedroom 3	3.9m x 3.4m	12'10" x 11'2"ft
Balcony 1	6.1m x 1.7m	20'0" x 5'7"ft
Balcony 2	5.5m x 1.5m	18'1" x 4'11"ft

Apartment 4

Number of bedrooms	3	
Internal Area	114.0 sqm - 1227 sqft	
Living / Dining / Kitchen	6.6m x 6.2m	21'8" x 20'4"ft
Master Bedroom	5.1m x 3.5m	16'9" x 11'6"ft
Bedroom 2	5.2m x 2.8m	17'1" x 9'2"ft
Bedroom 3	3.6m x 3.1m	11'10" x 10'2"ft
Balcony	6.8m x 1.9m	22'4" x 6'3"ft

Apartment 5

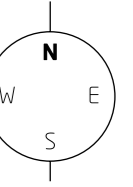
Number of bedrooms	3	
Internal Area	99.8 sqm - 1074 sqft	
Living / Dining / Kitchen	8.2m x 4.9m	26'11" x 16'1"ft
Master Bedroom	5.2m x 2.8m	17'1" x 9'2"ft
Bedroom 2	4.7m x 2.8m	15'5" x 9'2"ft
Bedroom 3	3.4m x 2.8m	11'2" x 9'2"ft
Balcony	5.1m x 1.5m	16'9" x 4'11"ft



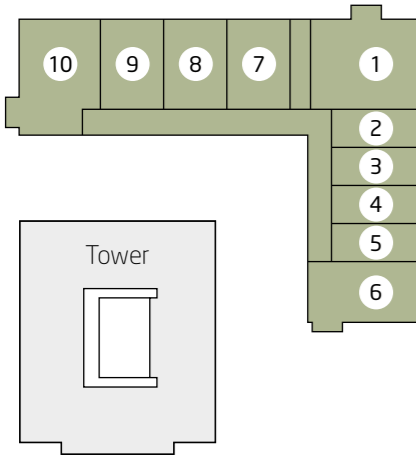
Disclaimer

The information in this document is indicative and is intended to act as a guide only as to the finished product. These particulars should not be relied upon as accurately describing any of the specific matters described by any order under the Property Misdescriptions Act 1991. This information does not constitute a contract, or warranty. The dimensions given on plans are subject to minor variations and are not intended to be used for carpet sizes, appliance sizes or items of furniture. There may be variations of balconies, terraces and windows depending on the apartment locations. See back page for full disclaimer. FEBRUARY 2014

Pavilion Floor 1



Key to apartment number



Apartment 3

Studio apartment
Internal Area
37.4 sqm - 403 sqft
Main Room
6.9m x 4.0m 22'8" x 13'1"ft
Terrace
4.2m x 1.7m 13'9" x 5'7"ft

Apartment 6

Number of bedrooms
3
Internal Area
105.9 sqm - 1140 sqft
Living / Dining / Kitchen
8.6m x 4.5m 28'3" x 14'9"ft
Master Bedroom
4.3m x 3.8m 14'1" x 12'6"ft
Bedroom 2
4.3m x 3.2m 14'1" x 10'6"ft
Bedroom 3
4.6m x 2.3m 15'1" x 7'7"ft
Balcony
3.7m x 1.5m 12'2" x 4'11"ft

Apartment 9

Number of bedrooms
2
Internal Area
72.5 sqm - 780 sqft
Living / Dining / Kitchen
9.8m x 4.0m 32'2" x 13'1"ft
Master Bedroom
4.3m x 3.3m 14'1" x 10'10"ft
Bedroom 2
3.3m x 2.8m 10'10" x 9'2"ft
Terrace
7.7m x 1.7m 25'3" x 5'7"ft

Apartment 1

Number of bedrooms
2
Internal Area
84.2 sqm - 907 sqft
Living / Dining / Kitchen
9.2m x 6.0m 30'2" x 19'8"ft
Master Bedroom
5.3m x 3.3m 17'5" x 10'10"ft
Bedroom 2
3.7m x 3.3m 12'2" x 10'10"ft
Balcony
3.6m x 1.6m 11'10" x 5'3"ft

Apartment 4

Studio apartment
Internal Area
37.4 sqm - 403 sqft
Main Room
6.9m x 4.0m 22'8" x 13'1"ft
Terrace
4.2m x 1.7m 13'9" x 5'7"ft

Apartment 7

Number of bedrooms
2
Internal Area
71.5 sqm - 770 sqft
Living / Dining / Kitchen
9.8m x 4.0m 32'2" x 13'1"ft
Master Bedroom
4.3m x 3.3m 14'1" x 10'10"ft
Bedroom 2
3.3m x 2.8m 10'10" x 9'2"ft
Terrace
7.7m x 1.7m 25'3" x 5'7"ft

Apartment 10

Number of bedrooms
3
Internal Area
106.6 sqm - 1147 sqft
Living / Dining / Kitchen
9.0m x 4.8m 29'6" x 15'9"ft
Master Bedroom
4.3m x 3.2m 14'1" x 10'6"ft

Apartment 2

Studio apartment
Internal Area
37.4 sqm - 403 sqft
Main Room
6.9m x 4.0m 22'8" x 13'1"ft
Terrace
3.3m x 1.2m 10'10" x 3'11"ft

Apartment 5

Studio apartment
Internal Area
37.4 sqm - 403 sqft
Main Room
6.9m x 4.0m 22'8" x 13'1"ft
Terrace
2.3m x 1.7m 7'7" x 5'7"ft

Apartment 8

Number of bedrooms
2
Internal Area
72.5 sqm - 780 sqft
Living / Dining / Kitchen
9.8m x 4.0m 32'2" x 13'1"ft
Master Bedroom
4.3m x 3.3m 14'1" x 10'10"ft
Bedroom 2
3.3m x 2.8m 10'10" x 9'2"ft
Terrace
7.7m x 1.7m 25'3" x 5'7"ft

Bedroom 2
4.6m x 3.2m 15'1" x 10'6"ft
Bedroom 3
4.6m x 2.8m 15'1" x 9'2"ft
Balcony
3.8m x 1.5m 12'6" x 4'11"ft
Terrace
2.1m x 1.7m 6'11" x 5'7"ft

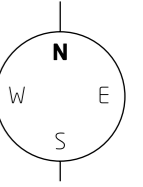


Disclaimer

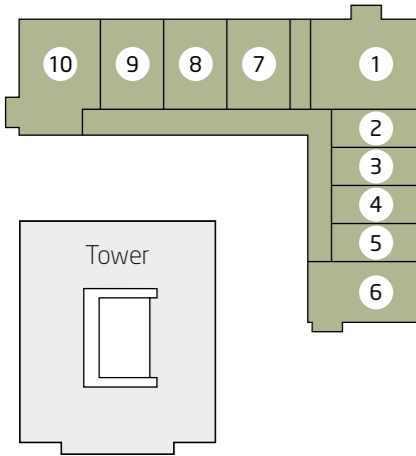
The information in this document is indicative and is intended to act as a guide only as to the finished product. These particulars should not be relied upon as accurately describing any of the specific matters described by any order under the Property Misdescriptions Act 1991. This information does not constitute a contract, or warranty. The dimensions given on plans are subject to minor variations and are not intended to be used for carpet sizes, appliance sizes or items of furniture. There may be variations of balconies, terraces and windows depending on the apartment locations. See back page for full disclaimer. FEBRUARY 2014



Pavilion Floor 2



Key to apartment number



Apartment 3

Studio apartment
Internal Area
37.4 sqm - 403 sqft
Main Room
6.9m x 4.0m 22'8" x 13'1"ft
Terrace
3.0m x 1.7m 9'10" x 5'7"ft

Apartment 6

Number of bedrooms
3
Internal Area
105.9 sqm - 1140 sqft
Living / Dining / Kitchen
8.6m x 4.5m 28'3" x 14'9"ft
Master Bedroom
4.3m x 3.8m 14'1" x 12'6"ft
Bedroom 2
4.3m x 3.2m 14'1" x 10'6"ft
Bedroom 3
4.6m x 2.3m 15'1" x 7'7"ft
Balcony
3.7m x 1.5m 12'2" x 4'11"ft

Apartment 9

Number of bedrooms
2
Internal Area
72.5 sqm - 780 sqft
Living / Dining / Kitchen
9.8m x 4.0m 32'2" x 13'1"ft
Master Bedroom
4.3m x 3.3m 14'1" x 10'10"ft
Bedroom 2
3.3m x 2.8m 10'10" x 9'2"ft
Terrace
5.0m x 1.7m 16'5" x 5'7"ft

Apartment 1

Number of bedrooms
2
Internal Area
84.2 sqm - 907 sqft
Living / Dining / Kitchen
9.2m x 6.0m 30'2" x 19'8"ft
Master Bedroom
5.3m x 3.3m 17'5" x 10'10"ft
Bedroom 2
3.7m x 3.3m 12'2" x 10'10"ft
Balcony
3.6m x 1.6m 11'10" x 5'3"ft

Apartment 4

Studio apartment
Internal Area
37.4 sqm - 403 sqft
Main Room
6.9m x 4.0m 22'8" x 13'1"ft
Terrace
3.4m x 1.7m 11'2" x 5'7"ft

Apartment 7

Number of bedrooms
2
Internal Area
71.5 sqm - 770 sqft
Living / Dining / Kitchen
9.8m x 4.0m 32'2" x 13'1"ft
Master Bedroom
4.3m x 3.3m 14'1" x 10'10"ft
Bedroom 2
3.3m x 2.8m 10'10" x 9'2"ft
Terrace
5.0m x 1.7m 16'5" x 5'7"ft

Apartment 10

Number of bedrooms
3
Internal Area
106.6 sqm - 1147 sqft
Living / Dining / Kitchen
9.0m x 4.8m 29'6" x 15'9"ft
Master Bedroom
4.3m x 3.2m 14'1" x 10'6"ft

Apartment 2

Studio apartment
Internal Area
37.4 sqm - 403 sqft
Main Room
6.9m x 4.0m 22'8" x 13'1"ft
Terrace
3.2m x 1.2m 10'6" x 3'11"ft

Apartment 5

Studio apartment
Internal Area
37.4 sqm - 403 sqft
Main Room
6.9m x 4.0m 22'8" x 13'1"ft
Terrace
1.7m x 1.5m 5'7" x 4'11"ft

Apartment 8

Number of bedrooms
2
Internal Area
72.5 sqm - 780 sqft
Living / Dining / Kitchen
9.8m x 4.0m 32'2" x 13'1"ft
Master Bedroom
4.3m x 3.3m 14'1" x 10'10"ft
Bedroom 2
3.3m x 2.8m 10'10" x 9'2"ft
Terrace
4.9m x 1.7m 16'1" x 5'7"ft

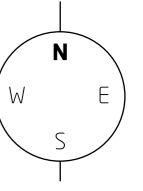
Bedroom 2
4.6m x 3.2m 15'1" x 10'6"ft
Bedroom 3
4.6m x 2.8m 15'1" x 9'2"ft
Balcony
3.8m x 1.5m 12'6" x 4'11"ft
Terrace
2.1m x 1.7m 6'11" x 5'7"ft



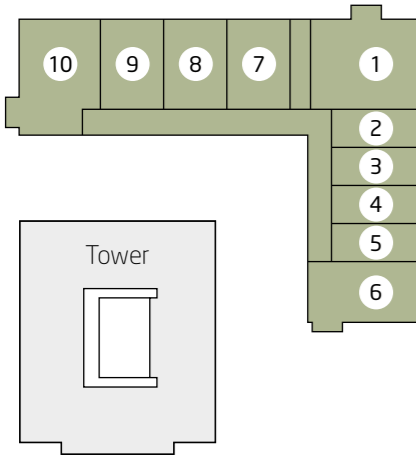
Disclaimer

The information in this document is indicative and is intended to act as a guide only as to the finished product. These particulars should not be relied upon as accurately describing any of the specific matters described by any order under the Property Misdescriptions Act 1991. This information does not constitute a contract, or warranty. The dimensions given on plans are subject to minor variations and are not intended to be used for carpet sizes, appliance sizes or items of furniture. There may be variations of balconies, terraces and windows depending on the apartment locations. See back page for full disclaimer. FEBRUARY 2014

Pavilion Floor 3



Key to apartment number



Apartment 3

Studio apartment
Internal Area
37.4 sqm - 403 sqft
Main Room
6.9m x 4.0m 22'8" x 13'1"ft
Terrace
3.0m x 1.7m 9'10" x 5'7"ft

Apartment 6

Number of bedrooms
3
Internal Area
105.9 sqm - 1140 sqft
Living / Dining / Kitchen
8.6m x 4.5m 28'3" x 14'9"ft
Master Bedroom
4.3m x 3.8m 14'1" x 12'6"ft
Bedroom 2
4.3m x 3.2m 14'1" x 10'6"ft
Bedroom 3
4.6m x 2.3m 15'1" x 7'7"ft
Balcony
3.7m x 1.5m 12'2" x 4'11"ft

Apartment 9

Number of bedrooms
2
Internal Area
72.5 sqm - 780 sqft
Living / Dining / Kitchen
9.8m x 4.0m 32'2" x 13'1"ft
Master Bedroom
4.3m x 3.3m 14'1" x 10'10"ft
Bedroom 2
3.3m x 2.8m 10'10" x 9'2"ft
Terrace
5.0m x 1.7m 16'5" x 5'7"ft

Apartment 1

Number of bedrooms
2
Internal Area
84.2 sqm - 907 sqft
Living / Dining / Kitchen
9.2m x 6.0m 30'2" x 19'8"ft
Master Bedroom
5.3m x 3.3m 17'5" x 10'10"ft
Bedroom 2
3.7m x 3.3m 12'2" x 10'10"ft
Balcony
3.6m x 1.6m 11'10" x 5'3"ft

Apartment 4

Studio apartment
Internal Area
37.4 sqm - 403 sqft
Main Room
6.9m x 4.0m 22'8" x 13'1"ft
Terrace
3.4m x 1.7m 11'2" x 5'7"ft

Apartment 7

Number of bedrooms
2
Internal Area
71.5 sqm - 770 sqft
Living / Dining / Kitchen
9.8m x 4.0m 32'2" x 13'1"ft
Master Bedroom
4.3m x 3.3m 14'1" x 10'10"ft
Bedroom 2
3.3m x 2.8m 10'10" x 9'2"ft
Terrace
5.0m x 1.7m 16'5" x 5'7"ft

Apartment 10

Number of bedrooms
3
Internal Area
106.6 sqm - 1147 sqft
Living / Dining / Kitchen
9.0m x 4.8m 29'6" x 15'9"ft
Master Bedroom
4.3m x 3.2m 14'1" x 10'6"ft

Apartment 2

Studio apartment
Internal Area
37.4 sqm - 403 sqft
Main Room
6.9m x 4.0m 22'8" x 13'1"ft
Terrace
3.2m x 1.2m 10'6" x 3'11"ft

Apartment 5

Studio apartment
Internal Area
37.4 sqm - 403 sqft
Main Room
6.9m x 4.0m 22'8" x 13'1"ft
Terrace
1.7m x 1.5m 5'7" x 4'11"ft

Apartment 8

Number of bedrooms
2
Internal Area
72.5 sqm - 780 sqft
Living / Dining / Kitchen
9.8m x 4.0m 32'2" x 13'1"ft
Master Bedroom
4.3m x 3.3m 14'1" x 10'10"ft
Bedroom 2
3.3m x 2.8m 10'10" x 9'2"ft
Terrace
4.9m x 1.7m 16'1" x 5'7"ft

Bedroom 2
4.6m x 3.2m 15'1" x 10'6"ft
Bedroom 3
4.6m x 2.8m 15'1" x 9'2"ft
Balcony
3.8m x 1.5m 12'6" x 4'11"ft
Terrace
2.1m x 1.7m 6'11" x 5'7"ft



Disclaimer

The information in this document is indicative and is intended to act as a guide only as to the finished product. These particulars should not be relied upon as accurately describing any of the specific matters described by any order under the Property Misdescriptions Act 1991. This information does not constitute a contract, or warranty. The dimensions given on plans are subject to minor variations and are not intended to be used for carpet sizes, appliance sizes or items of furniture. There may be variations of balconies, terraces and windows depending on the apartment locations. See back page for full disclaimer. FEBRUARY 2014

Specification



Interior Finishes

Engineered timber flooring to hallway, kitchen and living room
 Two colour palette options available (see main brochure)*
 Carpet to bedrooms
 Painted plasterboard ceilings
 Painted walls
 Painted solid core doors
 Contemporary high quality ironmongery
 Painted skirtings and architraves
 Built in coat and utility cupboards
 Built in wardrobe to master bedroom (and to second bedroom in tower 3 beds)
 Double glazed windows with sliding or casement doors to balconies / terraces

Kitchens

Bespoke contemporary kitchens with handle-less doors
 Composite stone worktops
 Stainless steel oversized under-mounted sink with chrome mixer tap (standard size to studios)
 All appliances by Bosch
 Integrated Stainless steel oven
 Induction hob with integrated recirculation fan above
 Integrated full height fridge / freezer (under counter to studios)
 Integrated stainless steel microwave to one, two and three beds and combination microwave / convection oven to studios
 Integrated multi-function dishwasher
 Space saving waste and recycling bins

Bathrooms / Shower Rooms / Ensuites

Sanitary ware generally as indicated on plan
 White bath with bath panel
 White shower tray or walk in shower with glass screen
 Chrome thermostatic bath / shower mixer with shower head
 White semi recessed basin with chrome monoblock mixer tap
 White dual flush floor mounted WC with concealed cistern
 Walls and floors fully tiled with large format contemporary wall tiling
 Fitted wall cabinet with mirrored door and side shelves above composite stone shelf
 Chrome towel rail to bathrooms / shower rooms / ensuites

Balconies / Terraces

Large balconies / terraces with glass / metal balustrades
 Decking or paving finish
 External light to balconies / terraces

Heating

Combined Heat and Power system providing individually metered heat and hot water to every home
 Underfloor heating to living rooms and bedrooms
 Individual thermostatic temperature controls in all main rooms

Building Fabric

Reinforced concrete frame and slabs on piled and raft foundations
 High performance unitised cladding system with metal, glass and stone finish to Tower
 Reconstituted stone and brick cladding to Pavilion
 Soundproofing of walls and floors separating homes to outperform current Building Regulations

Electrical Fittings

Energy efficient recessed downlighters throughout
 5amp lighting circuit in living area and master bedroom
 Television (terrestrial and Sky+) points to living room and master bedroom
 Condensing washer / dryer in utility cupboard
 Contemporary white switch plates and sockets
 Mechanical ventilation to outside with heat recovery
 Task lighting to underside of kitchen wall units and bathroom cabinets
 Shaver socket integrated in bathroom cabinets
 Superfast fibre to the home broadband

Management and Security

Development designed in consultation with 'Secure By Design' officer
 24hr concierge service
 Electronic access to internal communal areas and each floor
 CCTV system in public realm and building entrances
 Multi locking point locking system to front door to each home
 Audio visual door entry system to each home
 Interconnected mains supply smoke / heat detection system with battery back up to each home
 10 year NHBC warranty to each home

Communal Areas

Extensive double height main lobby with residents' lounge and feature finishes
 Passenger lifts and stair access from all levels
 Carpeted floors and painted walls to upper level communal corridors
 Residents' communal room with kitchenette and WC facilities
 Ground floor refuse / recycling store
 Ground floor post room and parcel storage room

External Communal Areas

Directly fronting a leafy mature park
 Landscaped public frontages around entrances to the development
 First floor residents' 'reading garden'
 Fourth floor residents' roof top 'grow garden'

Transport

Cycle space available to each home in lockable communal stores
 Car parking and motor cycle parking spaces available to purchase on selected homes
 Electric vehicle charging points to selected parking spaces
 3 years free car club membership to first occupant of each home

*Colour choices only available prior to a specific stage of construction



Find out more

Whether you're looking for a new home to live in or invest in, or both, for more information about **One The Elephant**, please contact:

Phone: 020 3667 1522

Email: welcomhome@lendlease.com

www.onetheelephant.com



Disclaimer

The information in this document is indicative and is intended to act as a guide only as to the finished product. These particulars should not be relied upon as accurately describing any of the specific matters described by any order under the Property Misdescriptions Act 1991. This information does not constitute a contract, or warranty. Development layouts provide approximate measurements only and furniture layouts are indicative. Dimensions are for guidance only and are not intended to be used to calculate carpet sizes, available space, or items of furniture. Total areas are provided as gross internal areas and are subject to a variance of +/-5%. There may be variations of balconies, terraces and windows depending on the apartment locations. North point relates to apartment locator. Orientation and handing of apartment may vary from the one shown. Please note: to increase legibility these plans may have been sized to fit the page. As a result plans may not be at the same scale as those on other pages. For detailed dimensions please speak to a member of our sales team. FEBRUARY 2014