

Luxemburg Gardens W6

Guide £3.45M

FINLAY
BREWER



Luxemburg Gardens W6

**6 Bedrooms * 2 Receptions
Kitchen/Breakfast/Family Room
Library * Study
4 Bathrooms (2 En Suite)
Master Suite With Dressing Room
Utility Room * Wine Cellar
Garden * EPC Rating E 54**

A truly fabulous 6 bedroom big boned Victorian house with excellent living/entertaining space and garden in one of Brook Green's premier streets just off the Green.

There is an elegant, high ceilinged first floor reception which overlooks St Paul's Girls' playing fields. There is also a wonderful open aspect to the rear of the property.

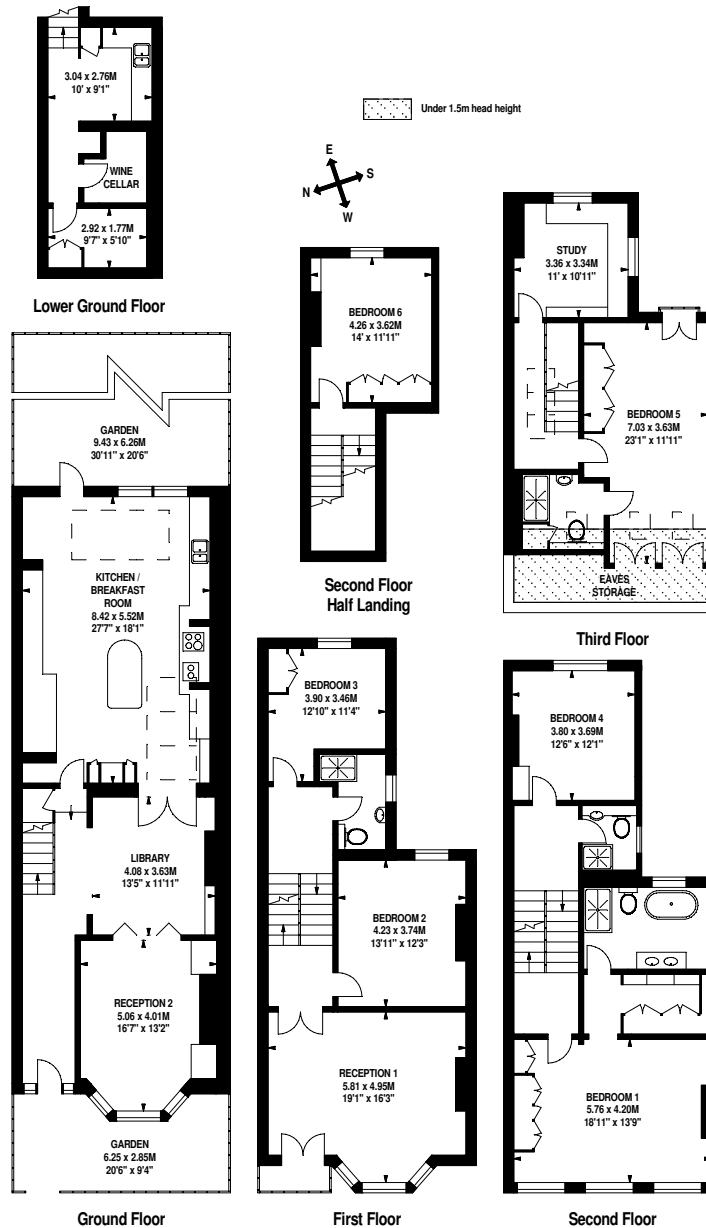
This substantial family house of approximately 3,700 sq ft abounds in original features whilst being contemporary in style and occupies a very good position on the street. It is definitely a must see!



GUIDE: £3.45M
FREEHOLD
SUBJECT TO CONTRACT



Approximate Gross Internal Area
3,692 Sq Ft/343 Sq M
 Including Eaves Storage of 75 Sq Ft/7 Sq M



FOR ILLUSTRATIVE PURPOSES ONLY - NOT TO SCALE
 The position & size of doors, windows, appliances and other features are approximate only.