



Girdlers Road W14

Guide £3.795M

**FINLAY
BREWER**

Girdlers Road W14

**6 Double Bedrooms * 2/3 Receptions
Kitchen/Breakfast Room
Media/Playroom/Reception 3
5 Bathrooms * Guest Cloakroom
Garden * EPC Rating C 72**

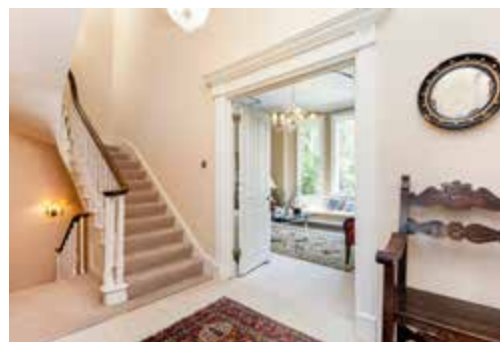
An elegant semi detached 6 double bedroom 5 bathroom Victorian family house of approximately 4,000 sq ft comprising 2 floors of living and entertaining space, 2 floors of bedrooms and a 1 bedroom flat/unit on the top floor.

There is a wonderful full width kitchen/ breakfast room with French doors onto the lovely granite paved garden and a large media/playroom/ reception to the front on the lower ground floor. In addition there is a utility room, wine cellar, bike area and guest cloakroom. The raised ground floor has a full width reception with bay window overlooking the garden and a second elegant reception to the front. The grand entrance hall off which is a guest cloakroom and large coats cupboard separates the 2 reception rooms. The first floor comprises the master suite to the front and a guest suite to the rear. There are 3 double bedrooms, a bathroom and shower room on the second floor whilst the top floor is arranged as 1 bedroom flat which is ideal for a nanny or long staying guest.

This substantial house has excellent big bones and oozes gracious living. If you want big, special and just off Brook Green this is the house for you.

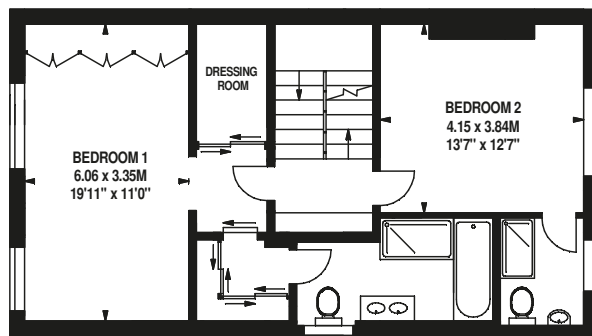
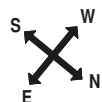
**GUIDE: £3.795M
FREEHOLD**

SUBJECT TO CONTRACT

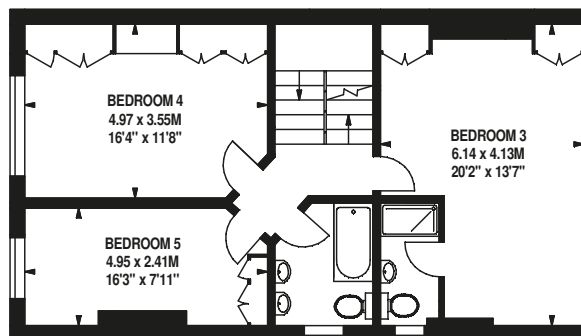




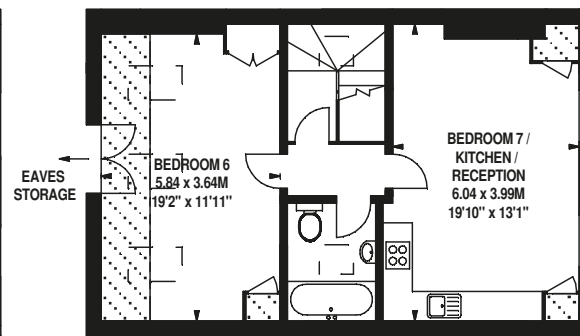
Approximate Gross Internal Area
3,961 Sq Ft/368 Sq M



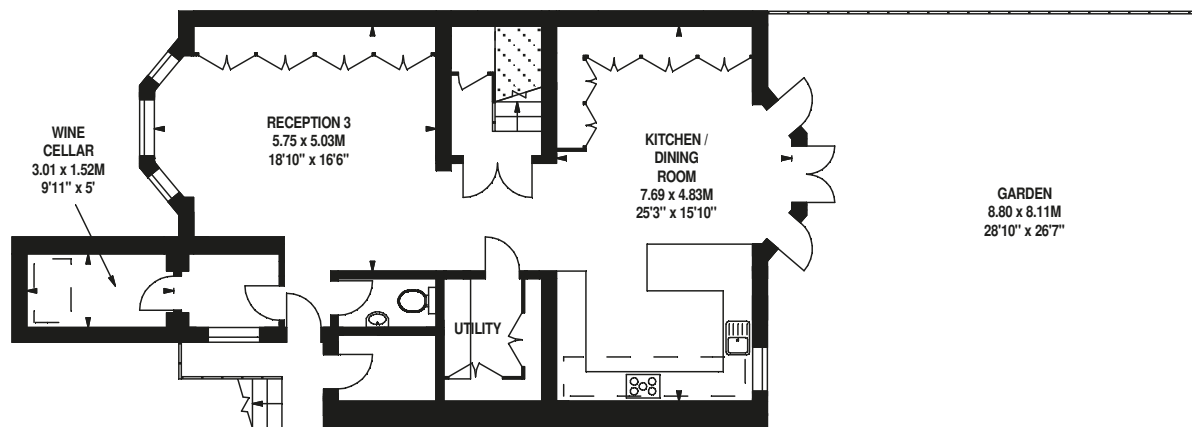
First Floor



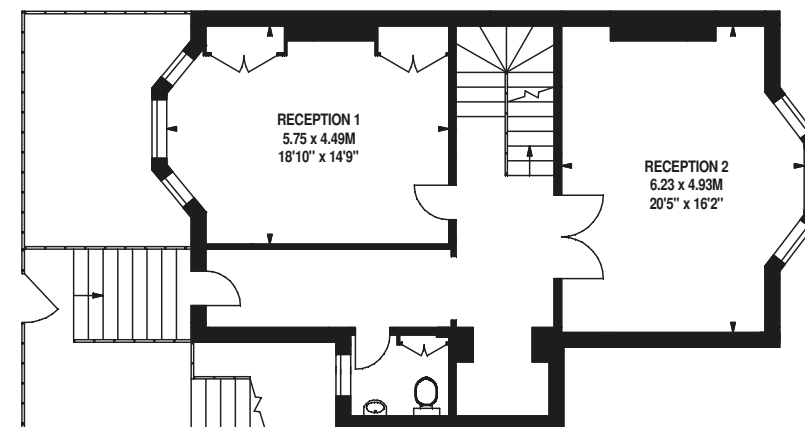
Second Floor



Third Floor



Lower Ground Floor



Ground Floor

FOR ILLUSTRATIVE PURPOSES ONLY - NOT TO SCALE
The position & size of doors, windows, appliances and other features are approximate only.