

**FINLAY  
BREWER**



**CAITHNESS ROAD W14**







**5 DOUBLE BEDROOMS \* RECEPTION/MEDIA/PLAY ROOM  
DINING ROOM \* KITCHEN \* 3 BATHROOMS (1 EN SUITE) \* EN SUITE SHOWER ROOM  
UTILITY \* UNDER EAVES STORAGE \* WALLED GARDEN \* EPC RATING E 50**

A wonderful flat fronted 5 double bedroom Victorian house with 2 floors of living/entertaining space, 3 floors of bedrooms and a secluded walled garden. The natural lower ground floor has been opened up from front to back to create an excellent reception/media/play room with French doors onto the garden. The raised ground floor has a dining room to the front and is part open to the well equipped kitchen which overlooks the garden. The loft space has been extended into to create a fifth double bedroom with en suite shower room and good under eaves storage. This house provides very flexible accommodation, has a lovely feel and is flooded with light.

**GUIDE £2.395M**

**FREEHOLD**

**SUBJECT TO CONTRACT**

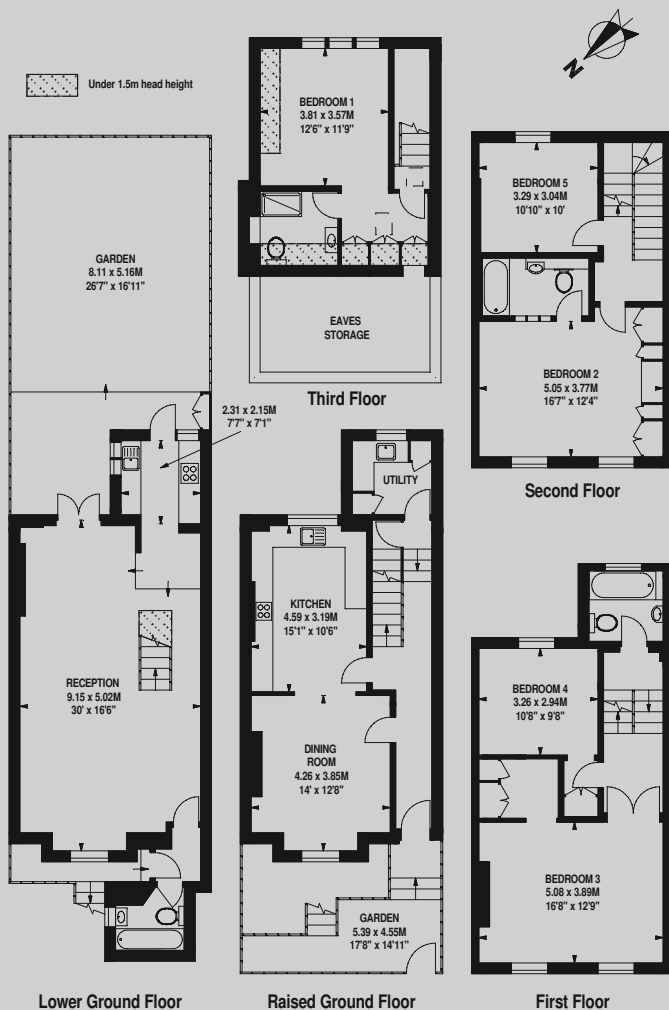


Misrepresentation: We make every effort to ensure that these particulars and other information given are as accurate as possible, but they are neither legal representation or warranties nor do they form an offer or contract of sale.



Approximate Gross Internal Area  
2,411 Sq Ft/224 Sq M

Excluding Eaves storage  
135 Sq Ft/12.5 Sq M



FOR ILLUSTRATIVE PURPOSES ONLY - NOT TO SCALE  
The position & size of doors, windows, appliances and other features are approximate only.

138 Shepherds Bush Road London W6 7PB  
Tel: 020 7371 4171 sales@finlaybrewer.co.uk