

**FINLAY
BREWER**



BROOK GREEN W6







**5 BEDROOMS * DOUBLE RECEPTION * KITCHEN / BREAKFAST ROOM
MASTER EN SUITE * FAMILY SHOWER ROOM * EN SUITE GUEST BEDROOM
STUDY * MEDIA/PLAY ROOM * GUEST CLOAKROOM * UTILITY ROOM
SOUTH FACING GARDEN * OFF STREET PARKING * EPC RATING C 70**

Having been totally renovated and extended in 2015/2016 this is a most elegant 5 bedroom period property with excellent living/entertaining space, a landscaped southerly garden and off street parking. With 2 floors of living and 3 floors of bedrooms covering approximately 2,680 sq ft the house has an open contemporary feel whilst retaining an abundance of original features. The oak wood flooring, extensive bespoke cabinetry and designer garden all combine to give it a wonderful atmosphere. It's ready to move into without any further expense and must be seen!

GUIDE £3.595M

FREEHOLD

SUBJECT TO CONTRACT

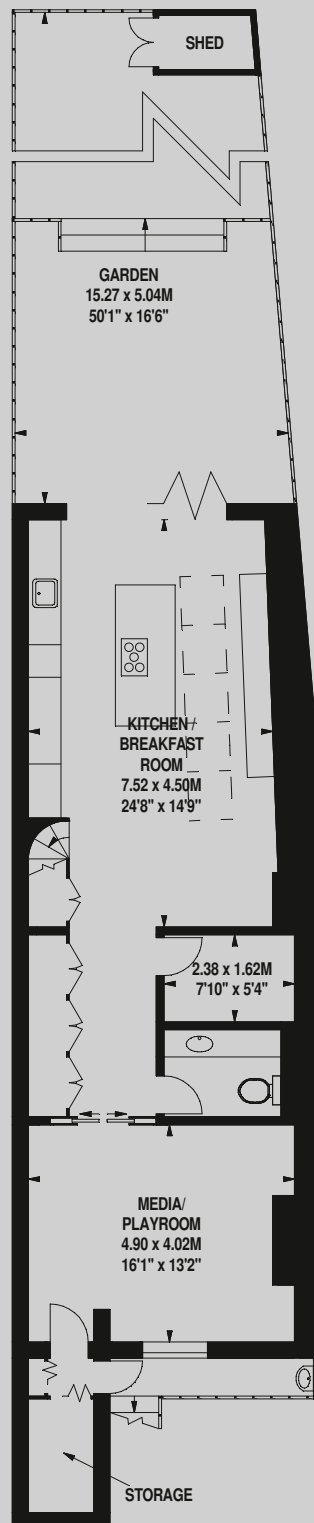
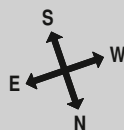


Misrepresentation: We make every effort to ensure that these particulars and other information given are as accurate as possible, but they are neither legal representation or warranties nor do they form an offer or contract of sale.

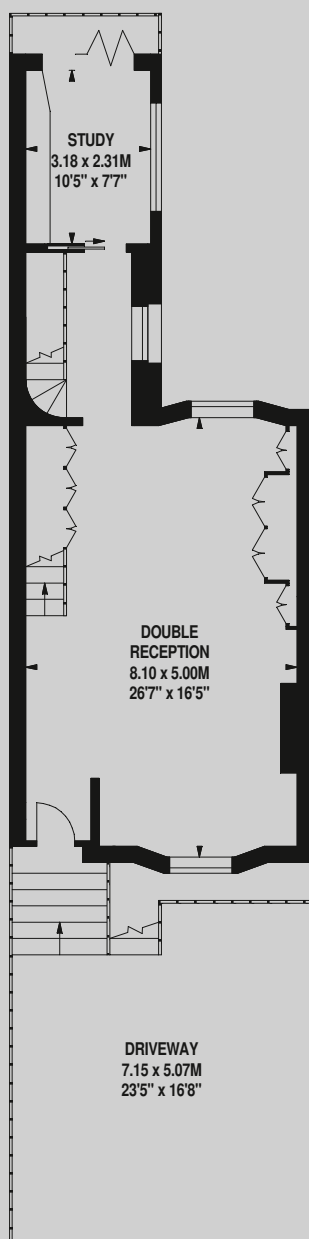
**FINLAY
BREWER**

**Approximate Gross Internal Area
2,680 Sq Ft/249 Sq M
Including Eaves Storage of
54 Sq Ft/5 Sq M**

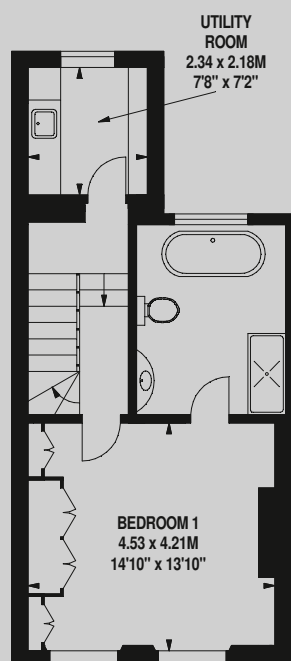
 Under 1.5m head height



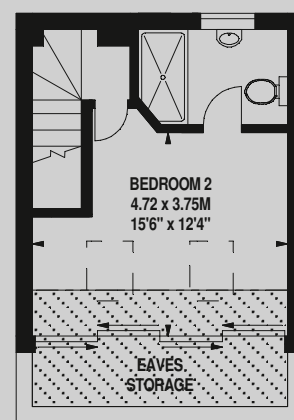
Lower Ground Floor



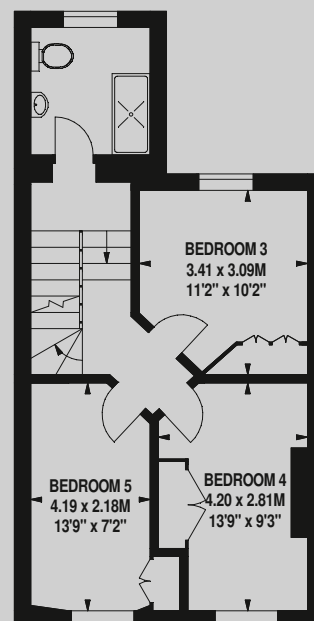
Ground Floor



First Floor



Third Floor



Second Floor

FOR ILLUSTRATIVE PURPOSES ONLY - NOT TO SCALE

The position & size of doors, windows, appliances and other features are approximate only.

138 Shepherds Bush Road London W6 7PB
Tel: 020 7371 4171 sales@finlaybrewer.co.uk