

**FINLAY
BREWER**



AMOR ROAD W6







**5 DOUBLE BEDROOMS * DOUBLE RECEPTION * KITCHEN/BREAKFAST ROOM
19'11 X 18'5 MEDIA/PLAYROOM * STUDY/BEDROOM 6 * 2 BATHROOMS (1 EN SUITE)
EN SUITE SHOWER ROOM * GUEST CLOAKROOM * UTILITY ROOM
33'8 X 21'2 GARDEN * EAVES STORAGE * EPC RATING D 62**

This fabulous family house offers fantastic flexible space throughout and has a lovely garden with an open summer house to the back. The ground and lower ground offers excellent living and entertaining space, including the full width kitchen/breakfast room to the rear. The entire first floor is dedicated to a wonderful master suite. There are 4 further double bedrooms and a study/bedroom 6. This substantial house oozes style and elegance. It is a must see!

GUIDE £2.975M

FREEHOLD

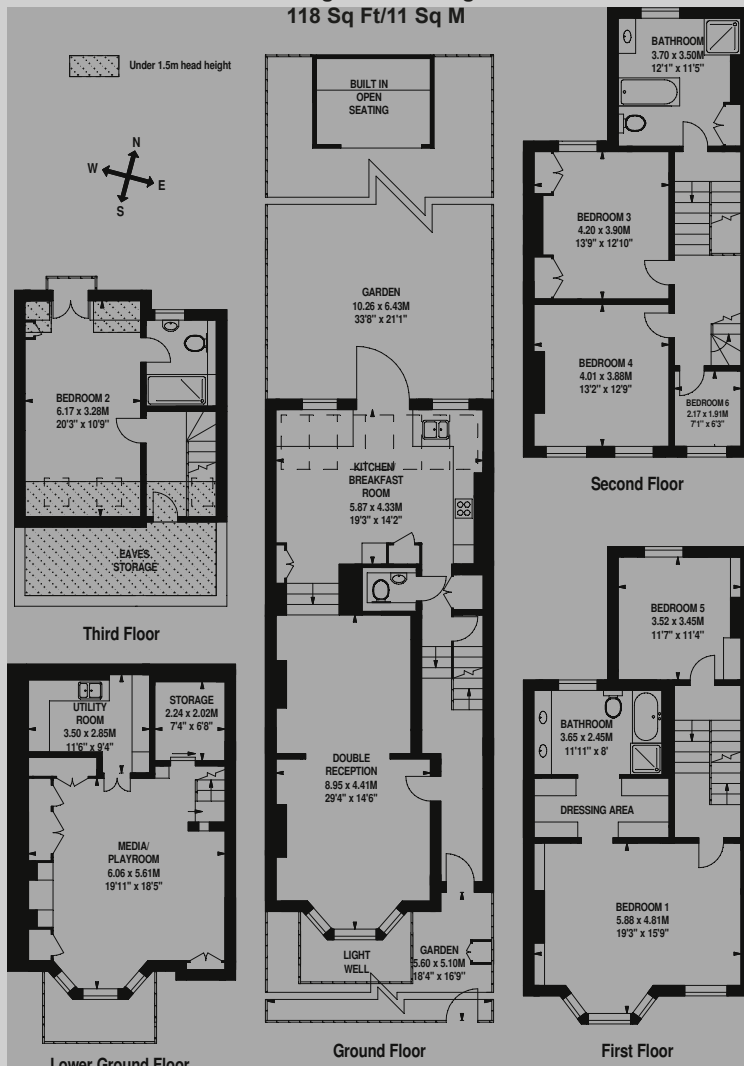
SUBJECT TO CONTRACT



Misrepresentation: We make every effort to ensure that these particulars and other information given are as accurate as possible, but they are neither legal representation or warranties nor do they form an offer or contract of sale.



**Approximate Gross Internal Area
3,251 Sq Ft/302 Sq M
Including Eaves Storage of
118 Sq Ft/11 Sq M**



FOR ILLUSTRATIVE PURPOSES ONLY - NOT TO SCALE
The position & size of doors, windows, appliances and other features are approximate only.

138 Shepherds Bush Road London W6 7BP
Tel: 020 7371 4171 sales@finlaybrewer.co.uk