



A stunning development from award winning Story Homes



welcome to
Edmondson Close



spacious, 4-bedroom detached
Ash house type

Story Homes

"Story Homes build stylish, award winning, high-quality homes in the north of England and south of Scotland.

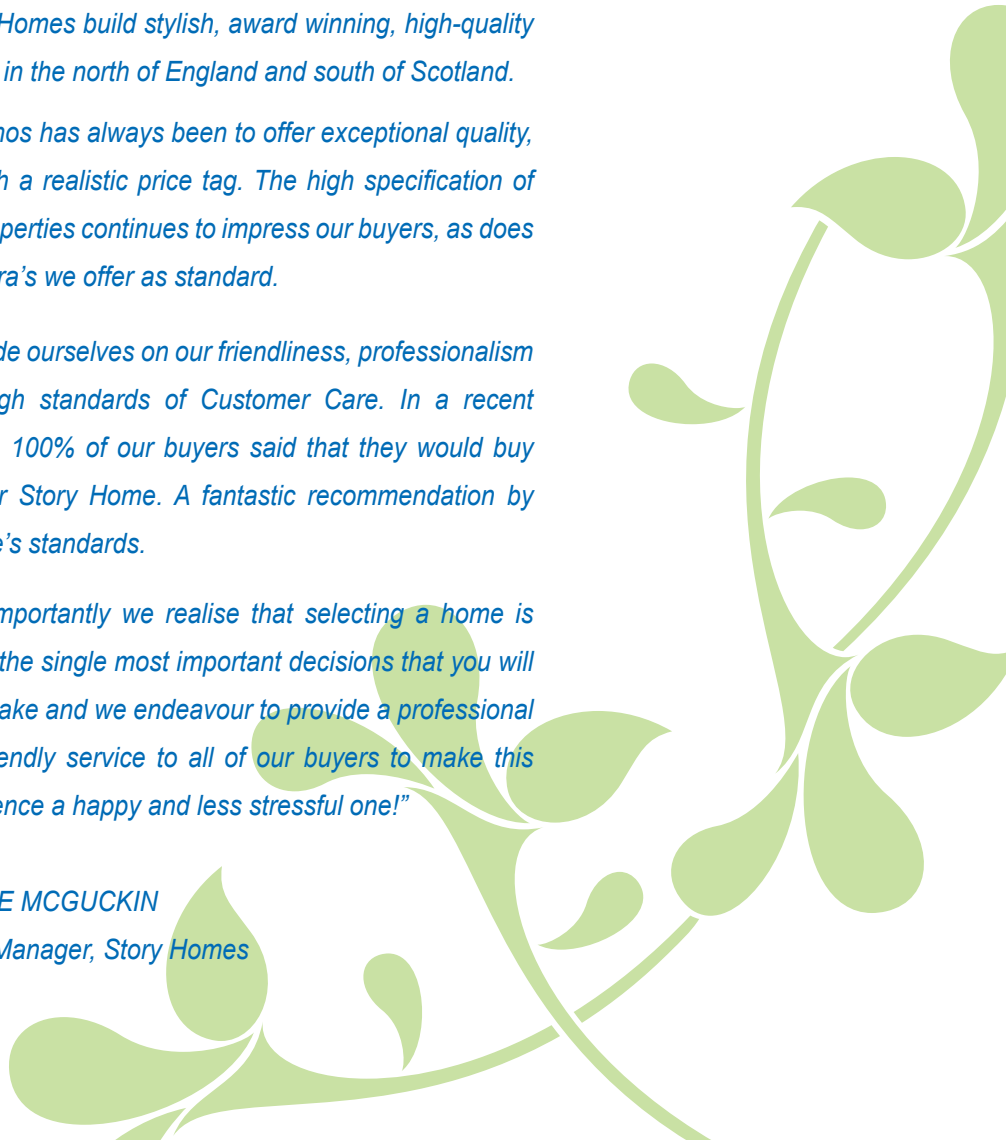
Our ethos has always been to offer exceptional quality, yet with a realistic price tag. The high specification of our properties continues to impress our buyers, as does the extra's we offer as standard.

We pride ourselves on our friendliness, professionalism and high standards of Customer Care. In a recent survey, 100% of our buyers said that they would buy another Story Home. A fantastic recommendation by anyone's standards.

Most importantly we realise that selecting a home is one of the single most important decisions that you will ever make and we endeavour to provide a professional and friendly service to all of our buyers to make this experience a happy and less stressful one!"

LOUISE MCGUCKIN

Sales Manager, Story Homes

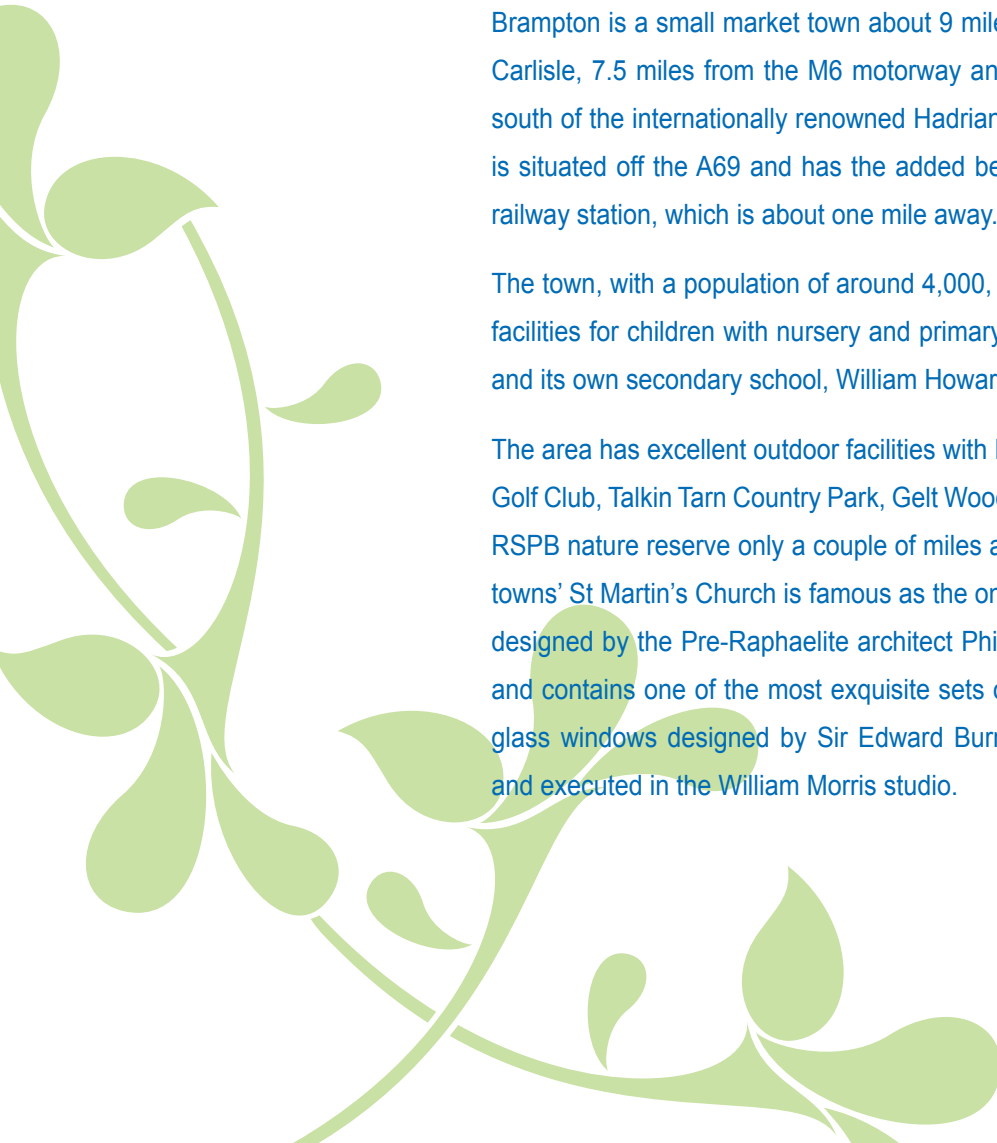


Brampton

Brampton is a small market town about 9 miles east of Carlisle, 7.5 miles from the M6 motorway and 2 miles south of the internationally renowned Hadrian's Wall. It is situated off the A69 and has the added benefit of a railway station, which is about one mile away.

The town, with a population of around 4,000, has good facilities for children with nursery and primary schools, and its own secondary school, William Howard.

The area has excellent outdoor facilities with Brampton Golf Club, Talkin Tarn Country Park, Gelt Woods and an RSPB nature reserve only a couple of miles away. The towns' St Martin's Church is famous as the only church designed by the Pre-Raphaelite architect Philip Webb, and contains one of the most exquisite sets of stained glass windows designed by Sir Edward Burne-Jones, and executed in the William Morris studio.



Edmondson Close

Edmondson Close is a superb development of 42 (no.) 3 and 4-bedroom properties incorporating an exciting mix of semi detached and detached styles, all with attractive exteriors and thoughtfully designed interiors. This development offers a great location in a stylish and sought after area. The development is named after Brampton's first station master, Thomas Edmondson, who invented the first railway ticket to be printed by a machine.

Each property we build has a cutting edge specification with sanitary ware from Kohler and appliances from AEG/Electrolux Group*. Fantastic, fully integrated kitchens and spacious accommodation throughout, en-suite bathroom to the master bedroom (selected plots) and living/family rooms have all been carefully designed to meet the needs of today's lifestyles, offering the perfect combination of exceptional craftsmanship, attention to detail and a sensible, practical layout.

*plot specific



spacious, light and airy, dual aspect
lounge featuring French doors



Edmondson Close development layout



Please note: external finishes may vary from plot to plot.
Please check with Sales Representative for further details.

Story Homes reserve the right to amend and update the specification or layout without prior notification. The dimensions given are approximate only (measured to the widest part) and we cannot be held responsible if sizes vary from those indicated. External finishes may vary from those shown and should be verified with Sales Advisor on site. Images shown are representative of Story Homes' developments.

Beech: 4-bed detached



Ground Floor Dimensions:

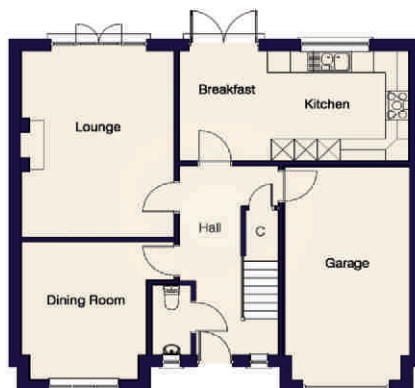
Lounge:	3987 x 5162 [12'-11" x 16'-9"]
Kitchen:	3600 x 3042 [11'-8" x 9'-11"]
Breakfast:	2393 x 3042 [7'-9" x 9'-11"]
Dining:	3267 x 3825 [10'-7" x 12'-5"]
Garage:	3267 x 5915 [10'-7" x 19'-3"]

First Floor Dimensions:

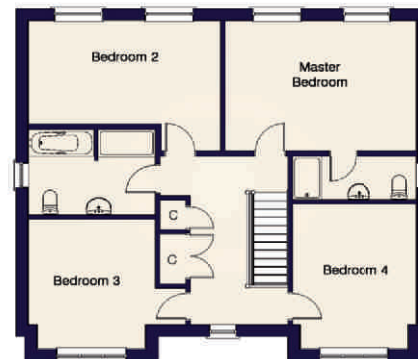
Master Bedroom:	5005 x 3607 [16'-3" x 11'-9"]
Bedroom 2:	5005 x 2857 [16'-3" x 9'-3"]
Bedroom 3:	3301 x 3610 [10'-9" x 11'-9"]
Bedroom 4:	3250 x 4029 [10'-7" x 13'-1"]

Approximate square footage: 1724.00

Ground floor plan



First floor plan



Willow: 4-bed detached



Ground Floor Dimensions:

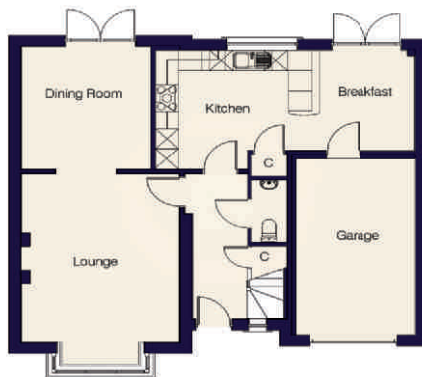
Lounge:	4055 x 4995 [13'-2" x 16'-3"]
Kitchen:	4030 x 3523 [13'-1" x 11'-5"]
Breakfast:	2662 x 2968 [8'-8" x 9'-8"]
Dining:	3318 x 3635 [10'-9" x 11'-10"]
Garage:	3090 x 5260 [10'-1" x 17'-1"]

First Floor Dimensions:

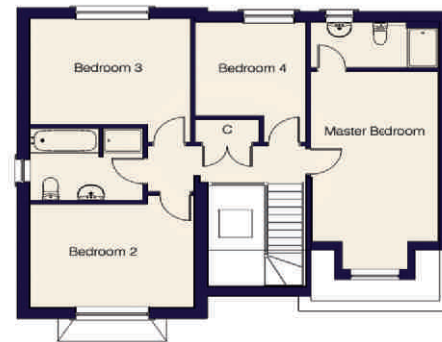
Master Bedroom:	3188 x 5161 [10'-4" x 16'-9"]
Bedroom 2:	4055 x 3154 [13'-2" x 10'-3"]
Bedroom 3:	3975 x 3203 [12'-11" x 10'-5"]
Bedroom 4:	2728 x 2823 [8'-10" x 9'-2"]

Approximate square footage: 1575.30

Ground floor plan



First floor plan



Cedar: 4-bed detached



Ground Floor Dimensions:

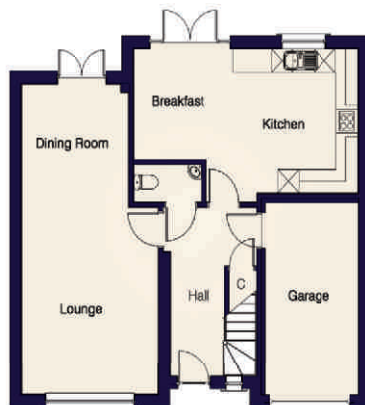
Lounge:	3830 x 4750 [12'-5" x 15'-5"]
Kitchen:	3512 x 3055 [11'-5" x 9'-11"]
Breakfast:	2793 x 2810 [9'-1" x 9'-2"]
Dining:	3000 x 3130 [9'-9" x 10'-2"]
Garage:	2640 x 4910 [8'-7" x 15'-11"]

First Floor Dimensions:

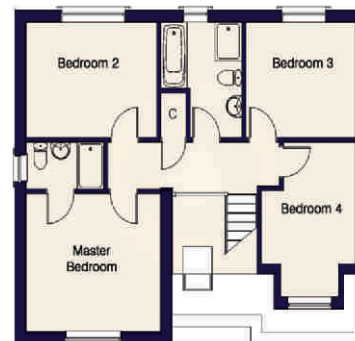
Master Bedroom:	3830 x 3507 [12'-5" x 11'-5"]
Bedroom 2:	3725 x 2944 [12'-1" x 9'-7"]
Bedroom 3:	3180 x 2944 [10'-4" x 9'-7"]
Bedroom 4:	2735 x 3096 [8'-11" x 10'-11"]

Approximate square footage: 1402.11

Ground floor plan



First floor plan



Ash: 4-bed detached



Ground Floor Room Dimensions:

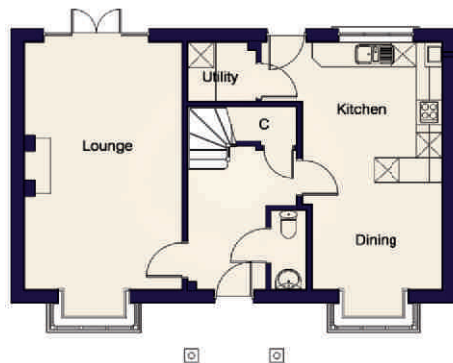
Lounge:	3715 x 6080 [12'-1" x 19'-9"]
Kitchen:	3331 x 3450 [10'-10" x 11'-3"]
Dining:	3100 x 2630 [10'-1" x 8'-7"]

First Floor Dimensions:

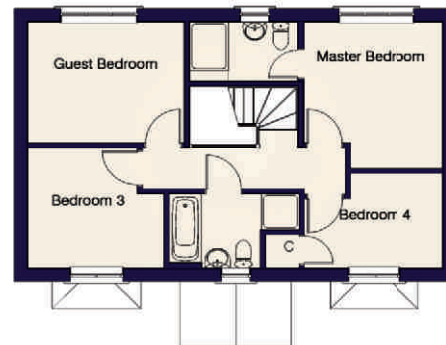
Master Bedroom:	3331 x 3621 [10'-10" x 11'-9"]
Bedroom 2:	3715 x 2991 [12'-1" x 9'-9"]
Bedroom 3:	3247 x 2970 [10'-6" x 9'-8"]
Bedroom 4:	3322 x 2339 [10'-10" x 7'-7"]

Approximate square footage: 1337.53

Ground floor plan



First floor plan



Hawthorn: 4-bed detached



Ground Floor Dimensions:

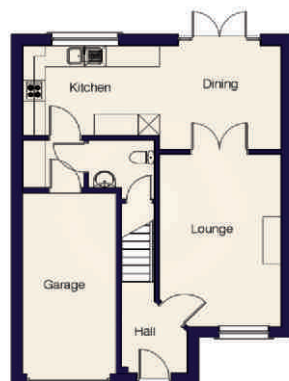
Lounge:	3335 x 5965 [10'-10" x 16'-2"]
Kitchen:	3758 x 2577 [12'-3" x 8'-5"]
Dining:	3335 x 2990 [10'-10" x 9'-9"]
Garage:	2571 x 5220 [8'-4" x 17"]

First Floor Dimensions:

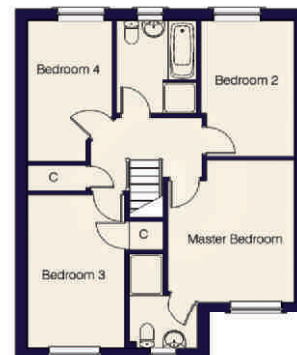
Master Bedroom:	3365 x 4082 [10'-11" x 13'-3"]
Bedroom 2:	2483 x 3903 [8'-1" x 12'-8"]
Bedroom 3:	2580 x 4433 [8'-5" x 14'-5"]
Bedroom 4:	2245 x 4060 [7'-4" x 13'-2"]

Approximate square footage: 1229.98

Ground floor plan



First floor plan



Aspen: 3-bed semi detached



Ground Floor Dimensions:

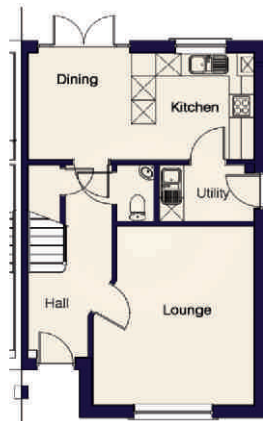
Lounge:	3943 x 4705 [12'-10" x 15'-3"]
Kitchen:	3000 x 2785 [9'-9" x 9'-1"]
Dining:	2517 x 2785 [8'-2" x 9'-1"]

First Floor Dimensions:

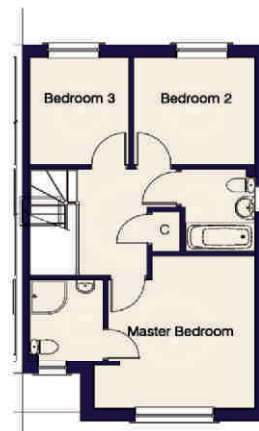
Master Bedroom:	3942 x 4031 [12'-10" x 13'-1"]
Bedroom 2:	2969 x 2815 [9'-8" x 9'-2"]
Bedroom 3:	2429 x 2815 [7'-11" x 9'-2"]

Approximate square footage: 1055.06

Ground floor plan



First floor plan



Osier: 3-bed semi detached



Ground Floor Dimensions:

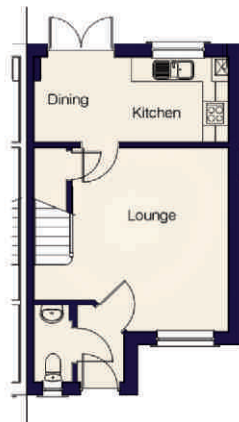
Lounge:	4606 x 4512 [15' x 14'-8"]
Kitchen:	2300 x 2093 [7'-6" x 6'-10"]
Dining:	2306 x 2093 [7'-6" x 6'-10"]

First Floor Dimensions:

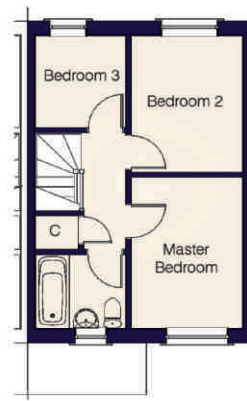
Master Bedroom:	2479 x 3487 [8'-1" x 11'-4"]
Bedroom 2:	2479 x 3149 [8'-1" x 10'-3"]
Bedroom 3:	2077 x 2123 [6'-6" x 6'-11"]

Approximate square footage: 711.33

Ground floor plan



First floor plan





“.... the property itself surpassed my expectations. It was a pleasure to move into find everything clean, tidy and well finished. Everyone who has visited since I moved in have also been impressed with the accommodation and make comments like “it’s what you would expect from a Story home.”

“Any teething problems have been dealt with by your site staff and after sales with the utmost levels of service and professionalism.

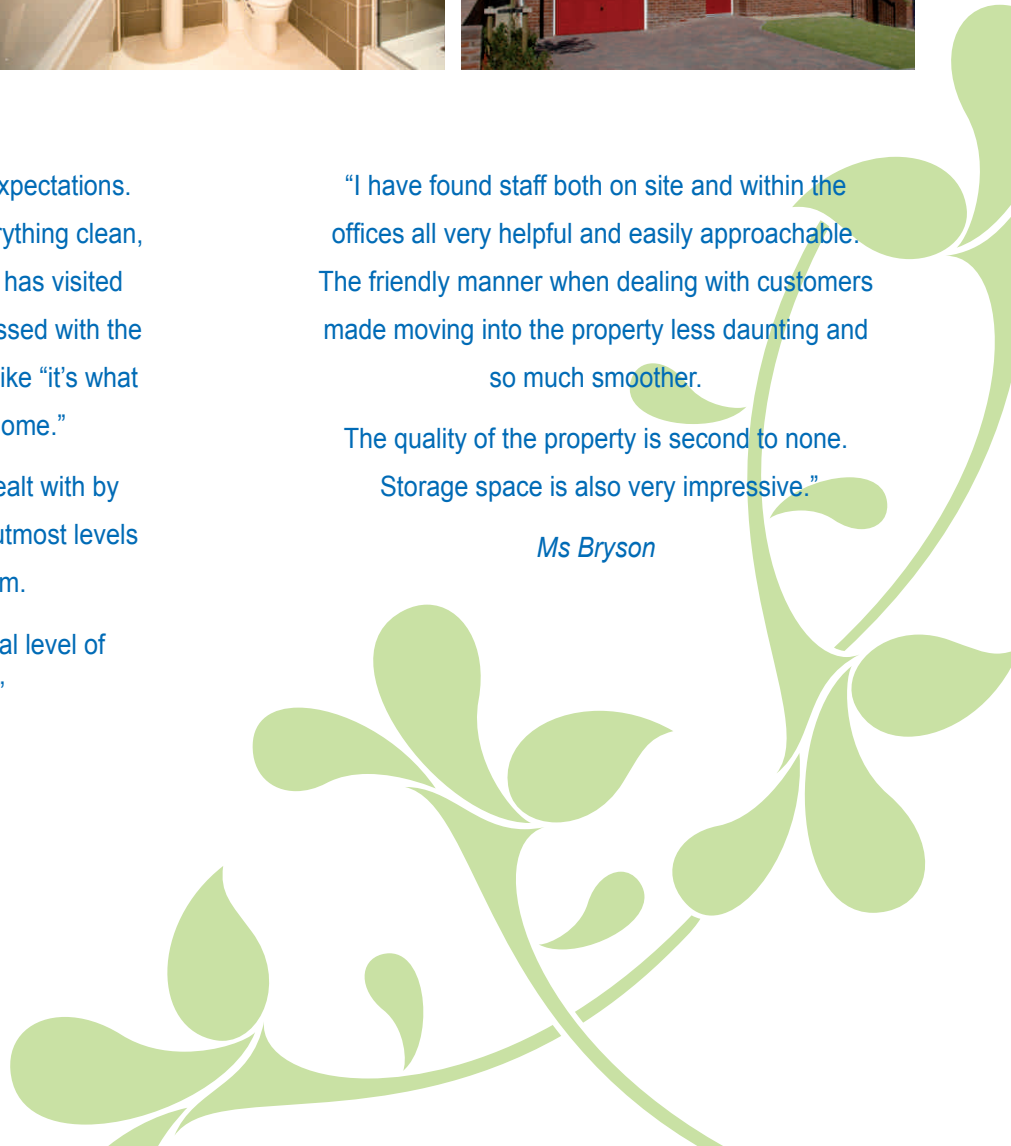
“Well done for offering an exceptional level of service to your customers.”

Ms Edgar

“I have found staff both on site and within the offices all very helpful and easily approachable. The friendly manner when dealing with customers made moving into the property less daunting and so much smoother.

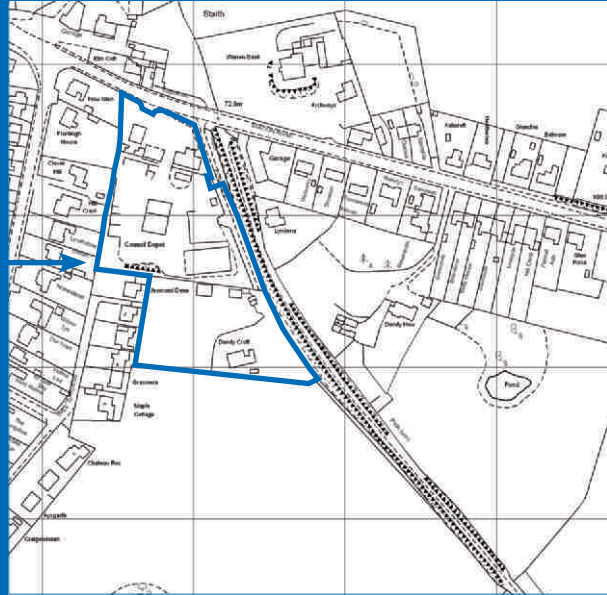
The quality of the property is second to none. Storage space is also very impressive.”

Ms Bryson



how to find us

CA8 1GH
We are here



Story Homes
Burgh Road Industrial Estate
Carlisle Cumbria
CA2 7NA
t: 01228 404555
m: 07970 026183
e: sales@storyhomes.co.uk