

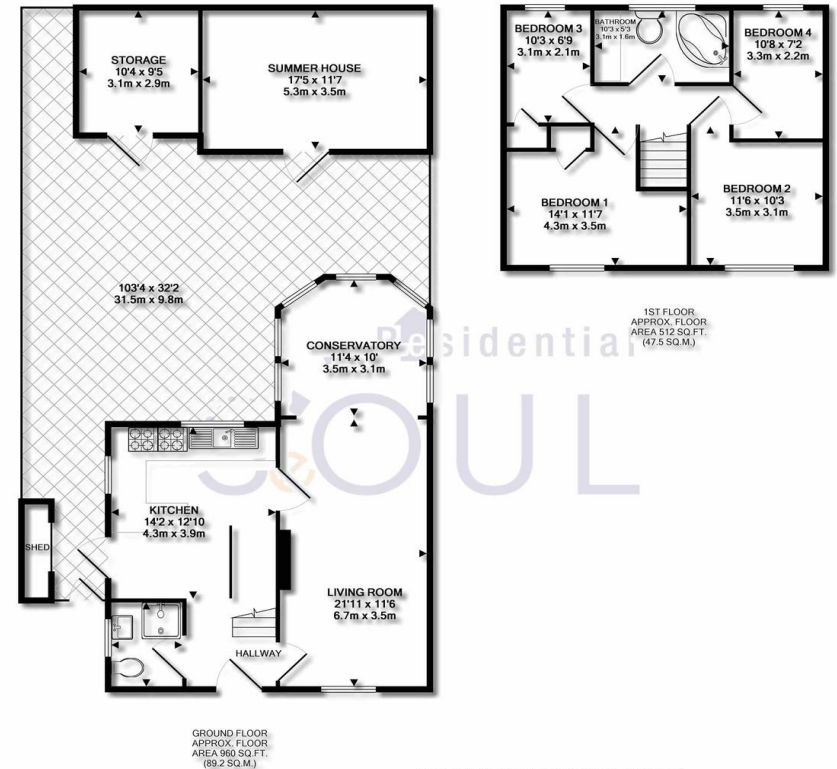


- 4 Bedroom semi detached family home
- Front and back garden
- Modern fitted kitchen
- Massive garden

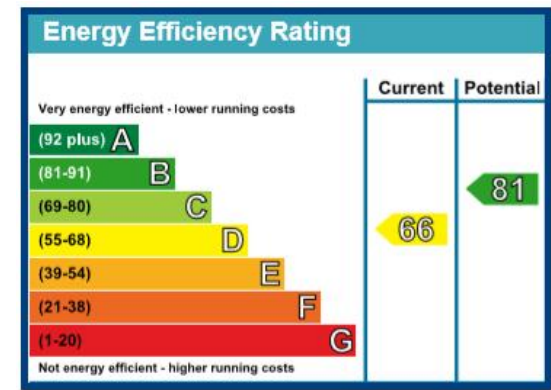
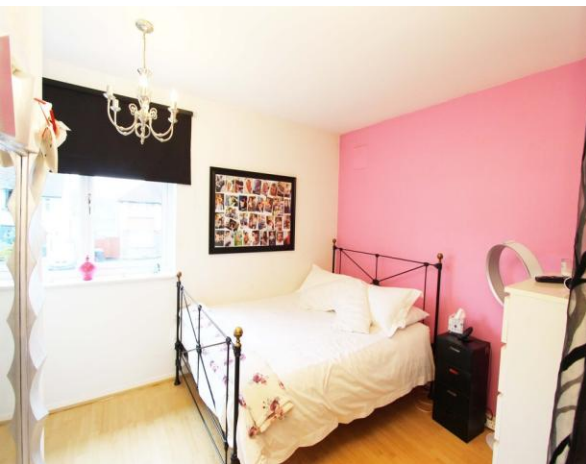
South Lane, New Malden

Asking Price Of £695,000

(Internal Viewing is highly recommended) Seoul Residential is pleased to introducing this very well proportioned family home. current family have been lived there for over three decades made the house for comfort living. Downstairs boasts a well decorated through lounge, a fully fitted modern family kitchen and a fully tiled toilet with large shower cube, through a good size conservatory there is a massive 3,300 sq ft garden with large patio, a summer house, a storage and a shed on the side. Upstairs has four good size bedrooms and a family bathroom with Jacuzzi corner bath, again fully tiled. this property has both side and back extension potentials as well as a large loft space for further developments if required.



Whilst every attempt has been made to ensure the accuracy of the floor plans contained here, measurements of doors, windows, rooms and any other items are approximate and no responsibility is taken for any error, omission, or mis-statement. This plan is for illustrative purposes only and should be used as such by any prospective purchaser. The services, systems and appliances shown have not been tested and no guarantee as to their operability or efficiency can be given.
 Made with Metropix C2018



SeOUL Residential Ltd
 158 High Street
 New Malden
 KT3 4ES

www.sr4u.co.uk
 020 8942 3579 / 020 8949 4989
 info@sr4u.co.uk

Agents Note: Whilst every care has been taken to prepare these sales particulars, they are for guidance purposes only. All measurements are approximate and for general guidance purposes only and they should not be relied upon and potential buyers are advised to recheck the measurements.