

- Newly refurbished
- Fully fitted kitchen
- Open plan kitchen/dinning area
- Close to BR station and high street

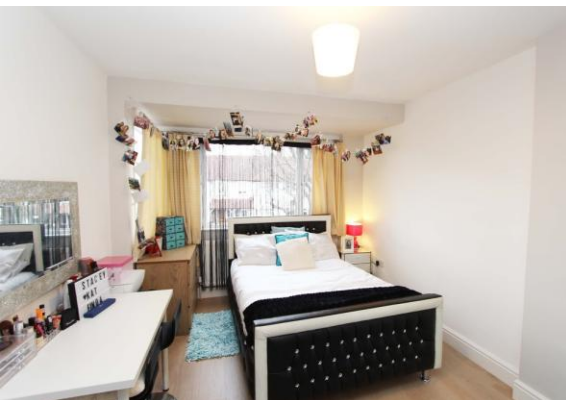
South Lane West, New Malden

Asking Price Of £545,000

Seoul Residential is pleased to offer this newly refurbished modern three-bedroom mid terrace family home. The property situated in a residential road with good transport links, a short walk to both New Malden BR station (0.6 miles) and Berrylands BR station (0.8 miles), with local shops around corner. The property offers a reception room, utility closet, open plan kitchen/dinner leads to good size garden with patio and shed. further three bedrooms and a family bathroom with 4-piece suit upstairs. Viewing is highly recommended.



TOTAL APPROX. FLOOR AREA 924 SQ.FT. (85.9 SQ.M.)
 Whilst every attempt has been made to ensure the accuracy of the floor plan contained here, measurements of doors, windows, rooms and any other items are approximate and no responsibility is taken for any error, omission, or mis-statement. This plan is for illustrative purposes only and should be used as such by any prospective purchaser. The services, systems and appliances shown have not been tested and no guarantee as to their operability or efficiency can be given.
 Made with Metropix ©2018



Energy Efficiency Rating		Environmental Impact (CO ₂) Rating	
	Current	Potential	
Very energy efficient - lower running costs			Very environmentally friendly - lower CO ₂ emissions
(92 plus) A			(92 plus) A
(81-91) B			(81-91) B
(69-80) C			(69-80) C
(55-68) D	62	64	(55-68) D
(39-54) E			(39-54) E
(21-38) F			(21-38) F
(1-20) G			(1-20) G
Not energy efficient - higher running costs			Not environmentally friendly - higher CO ₂ emissions
England & Wales	EU Directive 2002/91/EC		England & Wales
			EU Directive 2002/91/EC

SeOUL Residential Ltd
 158 High Street
 New Malden
 KT3 4ES

www.sr4u.co.uk
 020 8942 3579 / 020 8949 4989
 info@sr4u.co.uk

Agents Note: Whilst every care has been taken to prepare these sales particulars, they are for guidance purposes only. All measurements are approximate and for general guidance purposes only and they should not be relied upon and potential buyers are advised to recheck the measurements.