



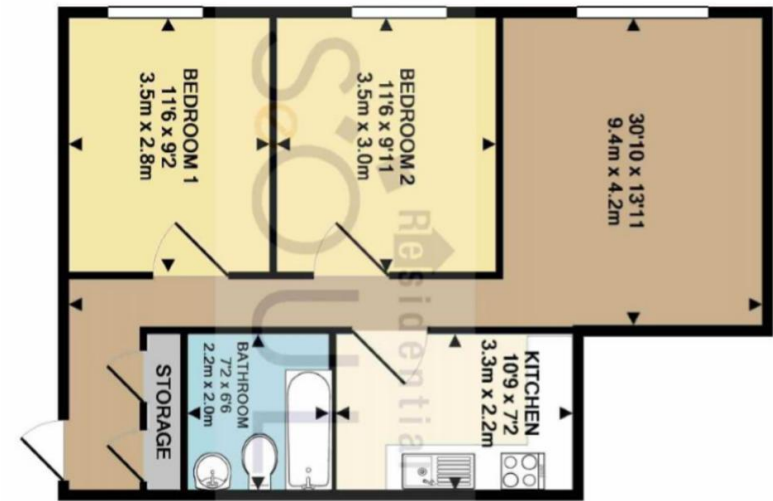
- Catchment of Local Schools
- Close to the Norbiton BR Station
- 1st Floor Flat
- Off Street Parking

Lambourne Grove, Kingston upon Thames

Asking Price Of £385,000

A delightful first floor purpose built flat offering generous space of 2 bedrooms. The property has well-maintained communal areas and a 958 year lease. Located within a 7 mins walk to the Norbiton railway station with quick access to London Waterloo.

No onward chain and immediate vacant possession means there is the opportunity to move in quickly so making time to have a look around is highly recommended.



TOTAL APPROX. FLOOR AREA 590 SQ.FT. (54.8 SQ.M.)

Whilst every attempt has been made to ensure the accuracy of the floor plan contained here, measurements of doors, windows, rooms and any other items are approximate and no responsibility is taken for any error, omission, or mis-statement. This plan is for illustrative purposes only and should be used as such by any prospective purchaser. The services, systems and appliances shown have not been tested and no guarantee as to their operability or efficiency can be given

Made with Metropix ©2017



Energy Efficiency Rating		
	Current	Potential
Very energy efficient - lower running costs		
(92 plus) A		
(81-91) B		
(69-80) C		
(55-68) D		
(39-54) E		
(21-38) F		
(1-20) G		
Not energy efficient - higher running costs		
England & Wales	EU Directive 2002/91/EC	

Environmental Impact (CO ₂) Rating		
	Current	Potential
Very environmentally friendly - lower CO ₂ emissions		
(92 plus) A		
(81-91) B		
(69-80) C	82	86
(55-68) D		
(39-54) E		
(21-38) F		
(1-20) G		
Not environmentally friendly - higher CO ₂ emissions		
England & Wales	EU Directive 2002/91/EC	

SeOUL Residential Ltd
158 High Street
New Malden
KT3 4ES

www.sr4u.co.uk
020 8942 3579 / 020 8949 4989
info@sr4u.co.uk

Agents Note: Whilst every care has been taken to prepare these sales particulars, they are for guidance purposes only. All measurements are approximate and for general guidance purposes only and they should not be relied upon and potential buyers are advised to recheck the measurements.