

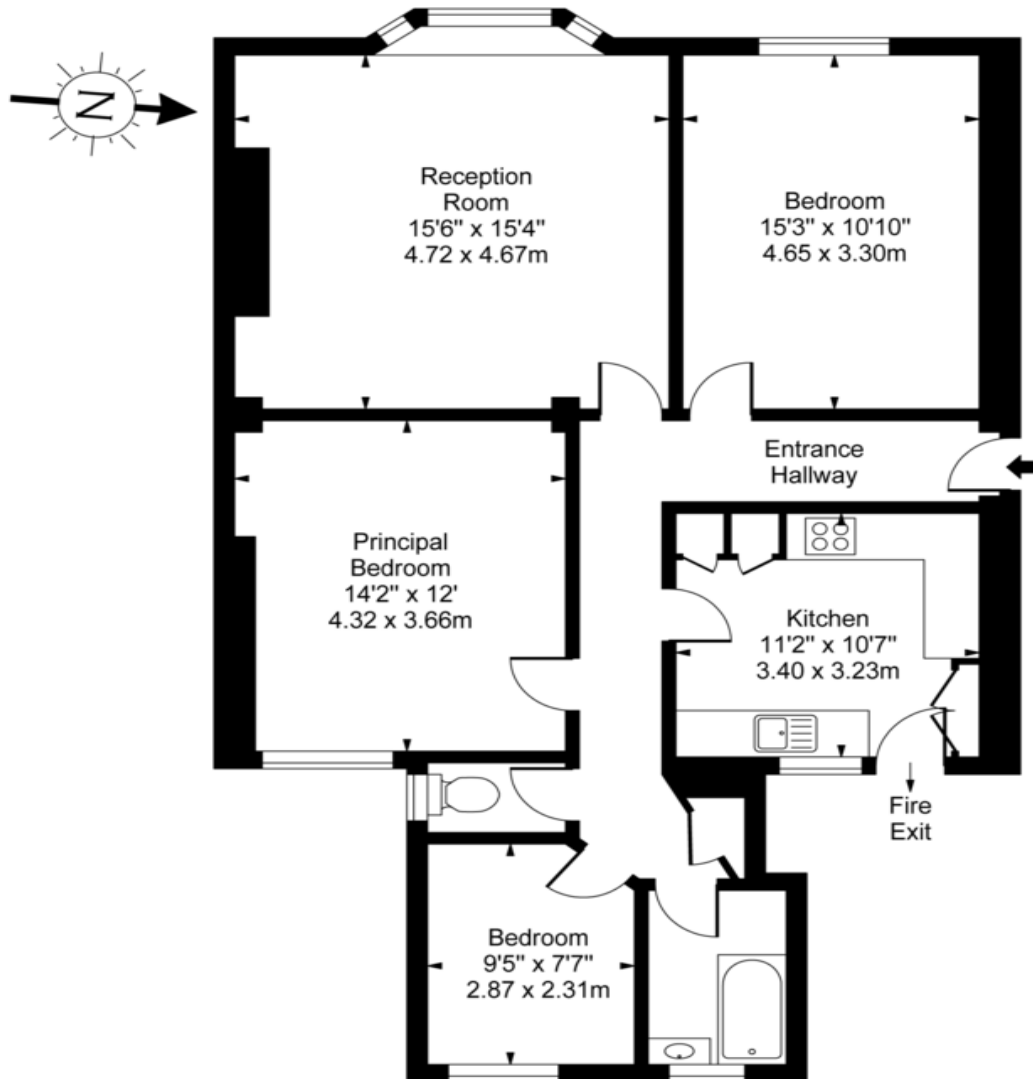
West End Lane, West Hampstead NW6 | £800,000 | Leasehold



Three double bedrooms  
Large Reception Room  
Superb views  
Kitchen breakfast room

Lift access  
Door entry-phone system  
Chain free  
Great location

# Queens Court, West End Lane, NW6



Fourth Floor

**Approx Gross Internal Area      982 Sq Ft - 91.23 Sq M**

For Illustration Purposes Only - Not To Scale    Floor Plan by [www.nogaphotostudio.com](http://www.nogaphotostudio.com)    Ref: No.35466

This floor plan should be used as a general outline for guidance only. Any intending purchaser or lessee should satisfy themselves by inspection, searches, enquiries and full survey as to the correctness of each statement. Any areas, measurements or distances quoted are approximate and should not be used to value a property or be the basis of any sale or let.