



PALMSTAR
LONDON

Portman Square, Marylebone, London W1

Asking Price: £2,850,000

Leasehold 134 Years



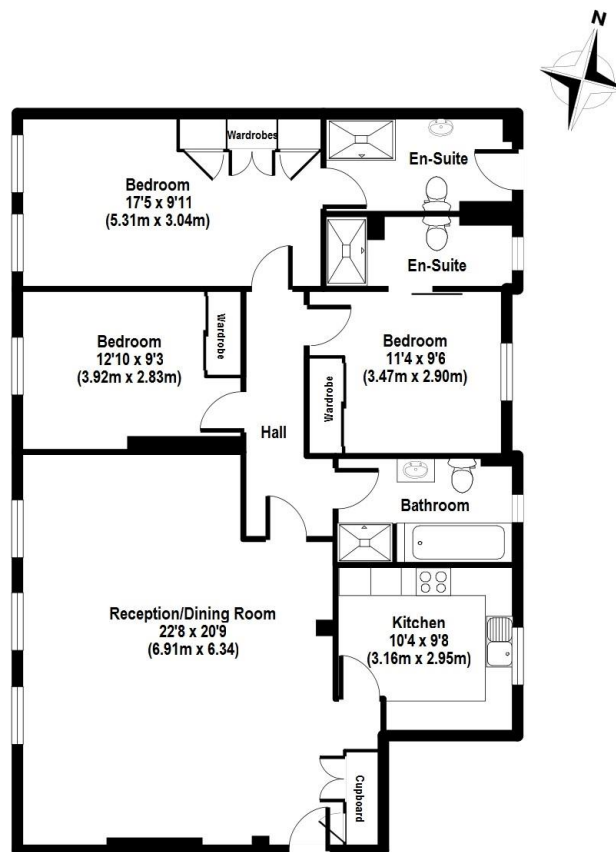
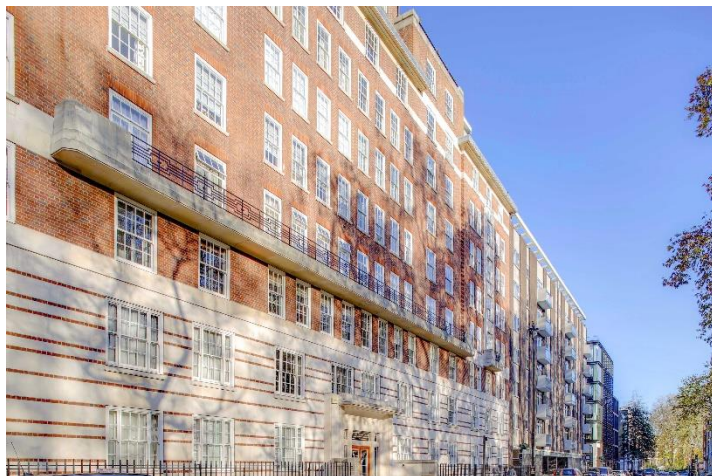
A stunning newly refurbished 3 bedroom 3 bathroom apartment totaling 1,240 square feet, in one of Marylebone's most sought after addresses. The property has a new lease of 134 years.

Reception Room | Kitchen | 3 Bedrooms | 3
Bath/Shower rooms (2 En-suite)

3rd Floor | Lift | Air Conditioning | 24-hour Porter
Private Garden Square

PALMSTAR LONDON

7 New Quebec Street, London, W1H 7RH | info@palmstar.co.uk | 020 3091 9311
www.palmstar.co.uk



APPROX GROSS INTERNAL FLOOR AREA: 1240 sq.ft / 115.1 sq.m

Portman Square

FOR ILLUSTRATIVE PURPOSES ONLY. NOT TO SCALE