



PALMSTAR
LONDON

Holland Park, London W11

Asking Price: £5,850,000

Share of Freehold



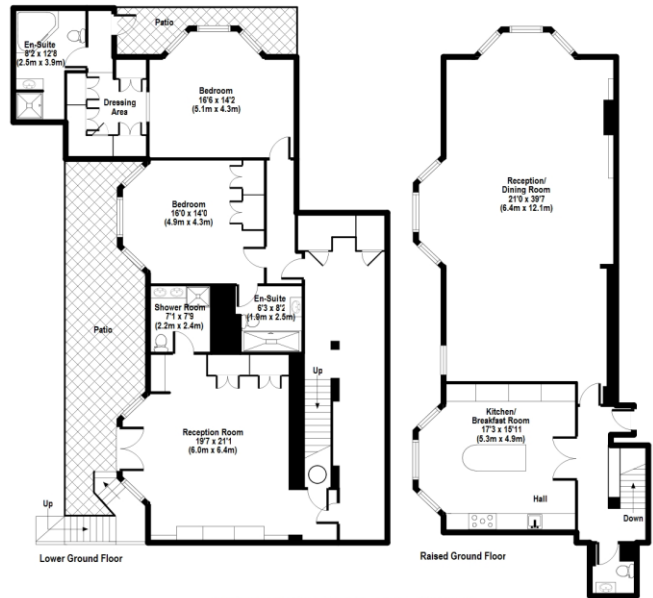
A luxurious interior designed 3 bedroom 3 bathroom maisonette (2,750 sq ft), 12 ft high ceilings and a double aspect 40 foot reception room in Holland Park.

Reception Room | Kitchen | Guest Cloakroom |
3 En-suite Bedrooms

Raised Ground and Lower Ground | Porter

PALMSTAR LONDON

7 New Quebec Street, London, W1H 7RH | info@palmstar.co.uk | 020 3091 9311
www.palmstar.co.uk



APPROX GROSS INTERNAL FLOOR AREA: 2747.80 sq. ft / 255.37 sq. m

FOR ILLUSTRATIVE PURPOSES ONLY. NOT TO SCALE.
While every attempt has been made to ensure the accuracy of the floor plan shown, all measurements, positioning, fixtures, features, fittings and any other data shown are an approximate interpretation for illustrative purposes only and are not to scale. No responsibility is taken for any error, omission, misstatement or use of false shown.
The above statement applies to both 'The Floor Plan People' and the Estate Agent marketing this property.
(c) THE FLOOR PLAN PEOPLE. unauthorised reproduction prohibited.

