



Risebridge Chase
Romford, Essex, RM1 4PR

£1,250,000
Freehold

Property Features

- Kitchen/Diner: 14'7 x 11'10
- Living Room: 21'4 x 15'10
- Bedroom 1: 12'8 x 10'4
- Bedroom 2: 12'9 x 9'11
- Bedroom 3: 14'6 x 8'3
- Bedroom 4: 11'2 x 9'11
- Bathroom/WC
- Two Bedroom Annex
- Shower Room/WC
- Outdoor Swimming Pool

Full Description

PORCH:

With tiled floor, Wooden entrance door to hallway.

HALLWAY:

With tiled floor, inset L.E.D skirting board lights, radiator, loft access point, inset spot lights.

BEDROOM 1:

12' 8" x 10' 4" (3.86m x 3.15m) With double glazed window to front, wooden floor, fitted wardrobes, TV point, inset spot lights, radiator.

BEDROOM 2:

12' 9" x 9' 11" (3.89m x 3.02m) With double glazed window to front, wooden floor, radiator, inset spot lights.

BEDROOM 3:

14' 6" x 8' 13" (4.42m x 2.77m) With double glazed window to rear, wooden floor, fitted wardrobes, TV point, inset spot lights, radiator.

BEDROOM 4:

11' 2" x 9' 11" (3.4m x 3.02m) With double glazed window to rear, wooden floor, fitted wardrobes, TV point, inset spot lights, radiator.

BATHROOM/WC:

With suite comprising panelled bath and mixer tap with shower attachment, hand wash basin with storage cupboard below, low level flush WC, inset spot lights, tiled floor, double glazed window to rear, chrome heated towel rail.



LIVING ROOM:

21' 4" x 15' 10" (6.5m x 4.83m) With double glazed window to front, wooden floor, TV point, inset spot lights, radiator.

KITCHEN/DINER:

14' 7" x 11' 10" (4.44m x 3.61m) Enjoying a range of eye level cupboards with worktops cupboards and drawers under, double glazed French doors to rear garden patio area, wooden floor, radiator, inset spot lights, built in oven/grill, built in microwave, built in 4 ring electric hob with extractor above, inset kickboard lights, door leading to utility room.



UTILITY ROOM:

8' 5" x 5' 1" (2.57m x 1.55m) With tiled floor, space for double fridge freezer, plumbing for washing machine/ tumble dryer, Gas combination boiler, door to shower room, entrance leading to annex.

SHOWER ROOM/WC

With suite comprising corner power shower, pedestal hand wash basin, low level flush WC, tiled floor, chrome heated towel rail, inset spot lights,



ENTRANCE LOBBY TO ANNEX:

With large pantry/storage cupboard, new carpet.

BEDROOM 1:

16' 7" x 8' 4" (5.05m x 2.54m) With double glazed windows to rear, radiator, new carpet.

KITCHEN/LIVING AREA:

15' 11" x 11' 11" (4.85m x 3.63m) With double glazed French doors to rear garden patio area, fitted kitchen with inset sink, laminate wood floor, TV point.



BEDROOM 2:

11' 10" x 7' 3" (3.61m x 2.21m) With double glazed window to side, electric radiator, new carpet.

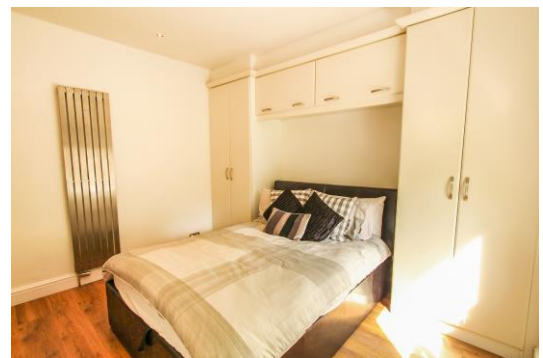
REAR GARDEN:

80' Approximately, with block paved patio area, well maintained lawn with flower and shrub borders, outdoor swimming pool area, water tap, Outside W/C

INTEGRAL GARAGE:

With electric roller door, power and light supply.

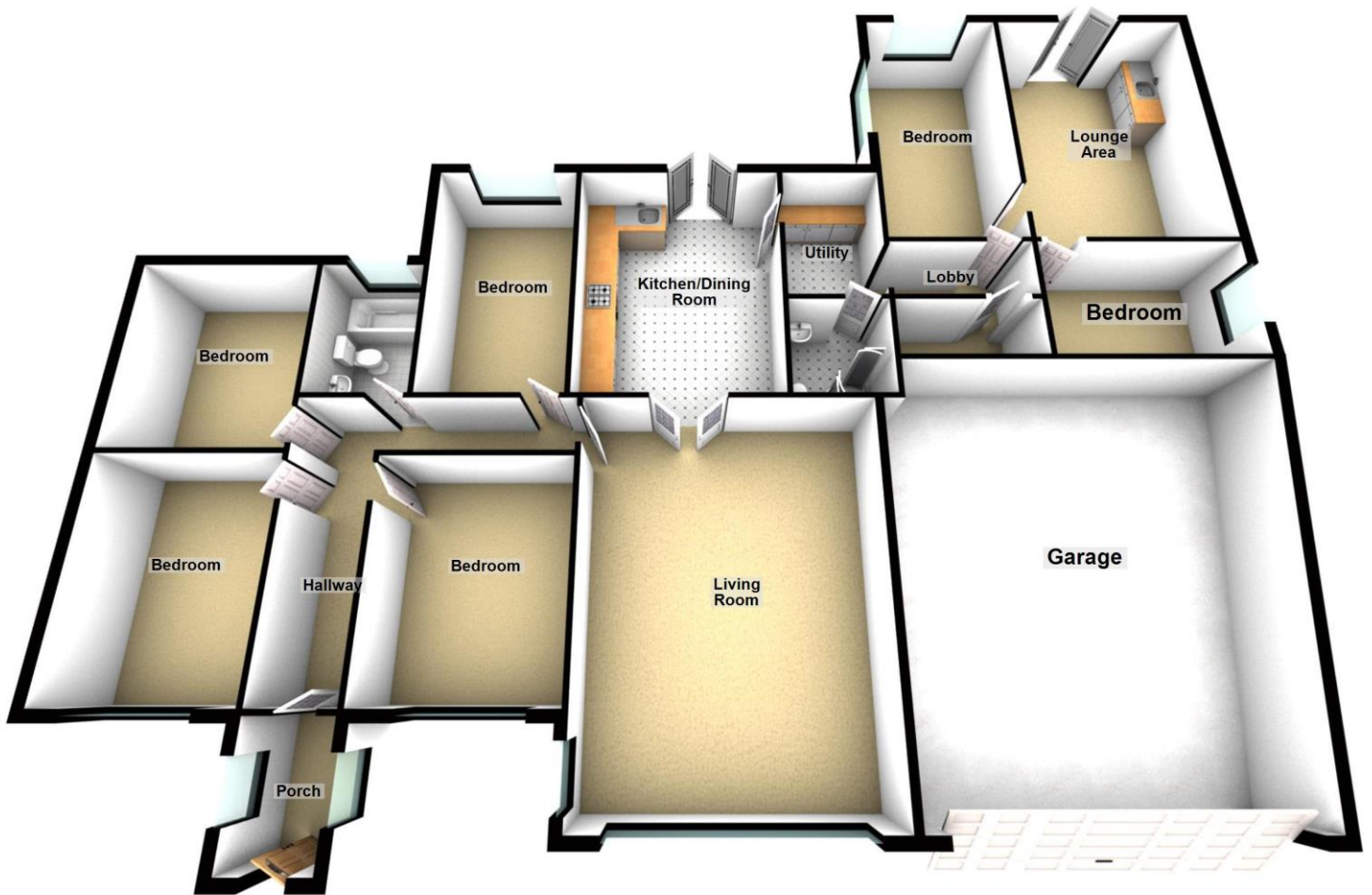








Ground Floor



1 Collier Row Road
Romford
Essex
RM5 3NP

www.keysandlee.co.uk
info@keysandlee.co.uk
01708 766 241

Agents Note: Whilst every care has been taken to prepare these sales particulars, they are for guidance purposes only. All measurements are approximate and are for general guidance purposes only and whilst every care has been taken to ensure their accuracy, they should not be relied upon and potential buyers are advised to recheck the measurements