



- 0.73 Miles to Thornton Heath Station
- 0.78 Miles to Norbury Station
- 0.24 Miles to St James the Great RC Primary and Nursery School

Georgia Road, Thornton Heath, CR7 8DQ

Benson and Partners are delighted to offer for sale this 4 bedroom, 2 bathroom, 2 reception room detached house. Complete with garage, off street parking, garden and more.

£625,000



Property Description

ENTRANCE HALL 15' 46" x 6' 60" (5.74m x 3.35m) Double glazed door to porch, double radiator, recessed spotlights, stairs to first floor and under stair cupboards.

SHOWER ROOM 6' 22" x 5' 60" (2.39m x 3.05m) Tiled floor, part tiled walls, pedestal washhand basin, shower cubicle, low level w/c, double glazed opaque window to front and heated towel rail.

LIVING ROOM 25' 72" x 11' 59" (9.45m x 4.85m) Double glazed window to front, laminate flooring, coving, recessed spotlights, feature fireplace and radiator.

DINING ROOM 10' 21" x 9' 53" (3.58m x 4.09m) Glass display fish tank to family room, laminate flooring, coving, recessed spotlights and double radiator.

FAMILY ROOM 24' 69" x 8' 74" (9.07m x 4.32m) Laminate flooring, double glazed doors and windows to garden and double radiator.

KITCHEN 13' 88" x 5' 60" (6.2m x 3.05m) Range of wall and base units with complementary worktop over, part tiled walls, stainless steel sink and drainer, coving and tiled walls.

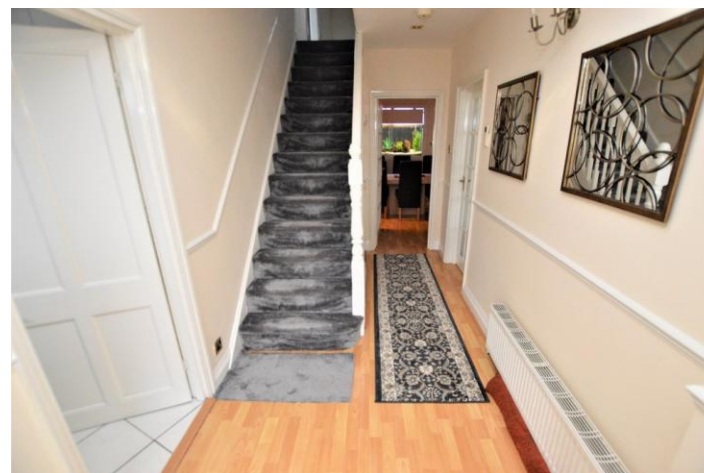
UTILITY ROOM 5' 60" x 4' 79" (3.05m x 3.23m) Plumbed for washing machine and part tiled floor and walls.

LANDING Carpet, storage cupboard and handrail.

BEDROOM 1 14' 1" x 10' 0" (4.29m x 3.05m) Double glazed window to front, carpet, coving, double radiator, recessed spotlights and range of fitted wardrobes.

BEDROOM 2 12' 13" x 8' 73" (3.99m x 4.29m) Laminate flooring, double glazed window to rear, radiator and recessed spotlights.

BEDROOM 3 13' 69" x 5' 64" (5.72m x 3.15m) Double glazed to rear, carpet, double glazed window to front and radiator.





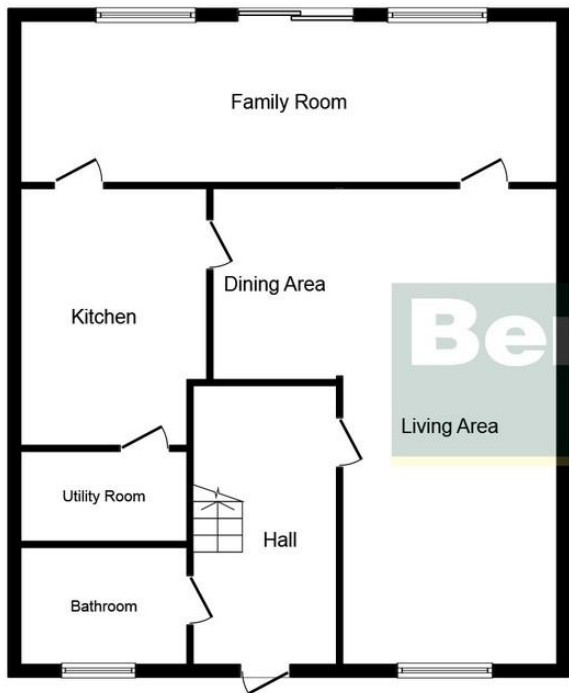
BEDROOM 4 7' 94" x 7' 47" (4.52m x 3.33m) Double glazed window to front, carpet and radiator.

BATHROOM 7' 96" x 5' 91" (4.57m x 3.84m) Carpet, double glazed opaque window to rear, heated towel rail, tiled walls, pedestal wash hand basin, low level w/c and panelled bath with screen.

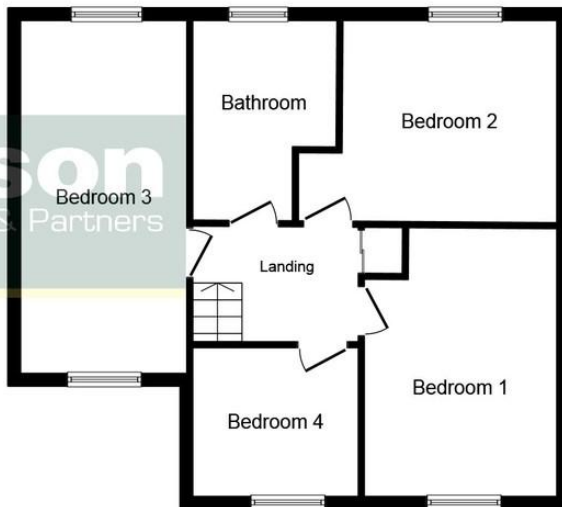
REAR GARDEN Lawned, walled and fenced boundaries.

DETACHED GARAGE Up and over.





Ground Floor



First Floor



%epcGraph_c_1_334%

This plan is for illustration purposes only and may not be representative of the property. Plan not to scale.

49 Lower Addiscombe Road,
Croydon, Surrey, CR0 6PQ

www.bensonpartners.co.uk
02086670121
eastcroydon@bensonpartners.co.uk

Agents Note: Whilst every care has been taken to prepare these sales particulars, they are for guidance purposes only. All measurements are approximate and are for general guidance purposes only and whilst every care has been taken to ensure their accuracy, they should not be relied upon and potential buyers are advised to recheck the measurements.