



14 Skylark Meadows, Whiteley PO15 6TJ
Asking Price £1,250,000





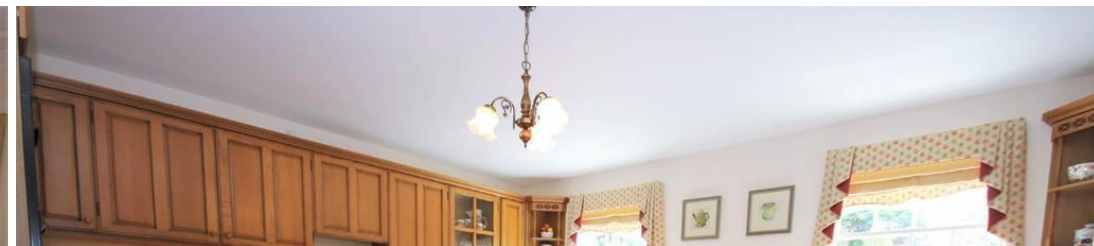
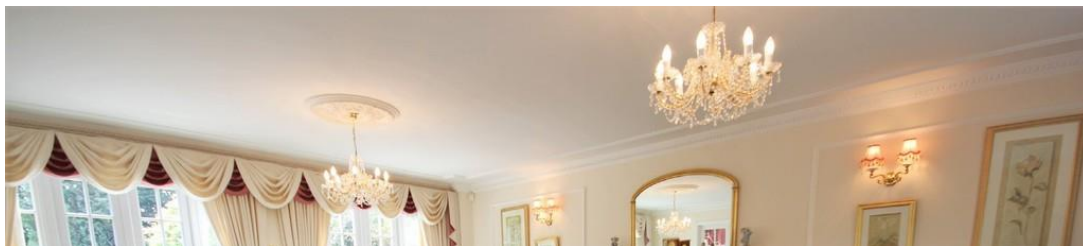
Walker & Waterer are delighted to present the opportunity to purchase this impressive executive home offering spacious living accommodation alongside beautifully landscaped grounds.

Skylark Meadows is considered to be one of Hampshire's most sought after locations, set around an 18-hole golf course which itself has recently undergone a million-pound renovation. The exclusive homes on Skylark enjoy complimentary VIP membership to Skylark Golf & Country Club for all residents, including a state of the art gym, swimming pool & 18-hole golf course, all right on your doorstep alongside its renowned restaurant, bars and spa.

Excellent transport links are easily accessible, including junction 9 of the M27 getting you to Southampton City Centre & Portsmouth City Centre within 20 minutes, as well as Southampton Airport . The property is also ideally situated for any boating or sailing enthusiast with the renowned River Hamble & Swanwick Marina only minutes away.



- Sat on a plot in excess of 0.5 of an Acre, this prestigious family home enjoys enviable panoramic views across Skylark golf course.
- A sweeping block paved driveway takes you to the triple garage and grand front porch complete with twin pillars
- As you walk in you are greeted by the generous reception hallway with staircase to the galleried landing.
- The dual aspect living room features two sets of double doors opening directly onto the patio & a centre piece gas fire set in attractive surround.
- The dining room enjoys a large bay window to the rear.
- The kitchen/breakfast room is fitted with an extensive range of Oak units incorporating built in appliances including dishwasher, fridge/freezer, double oven & separate hob.
- Further appliance space can be found in the ample utility room.
- Two further reception rooms complete the ground floor, with the family room giving access to the triple aspect conservatory.



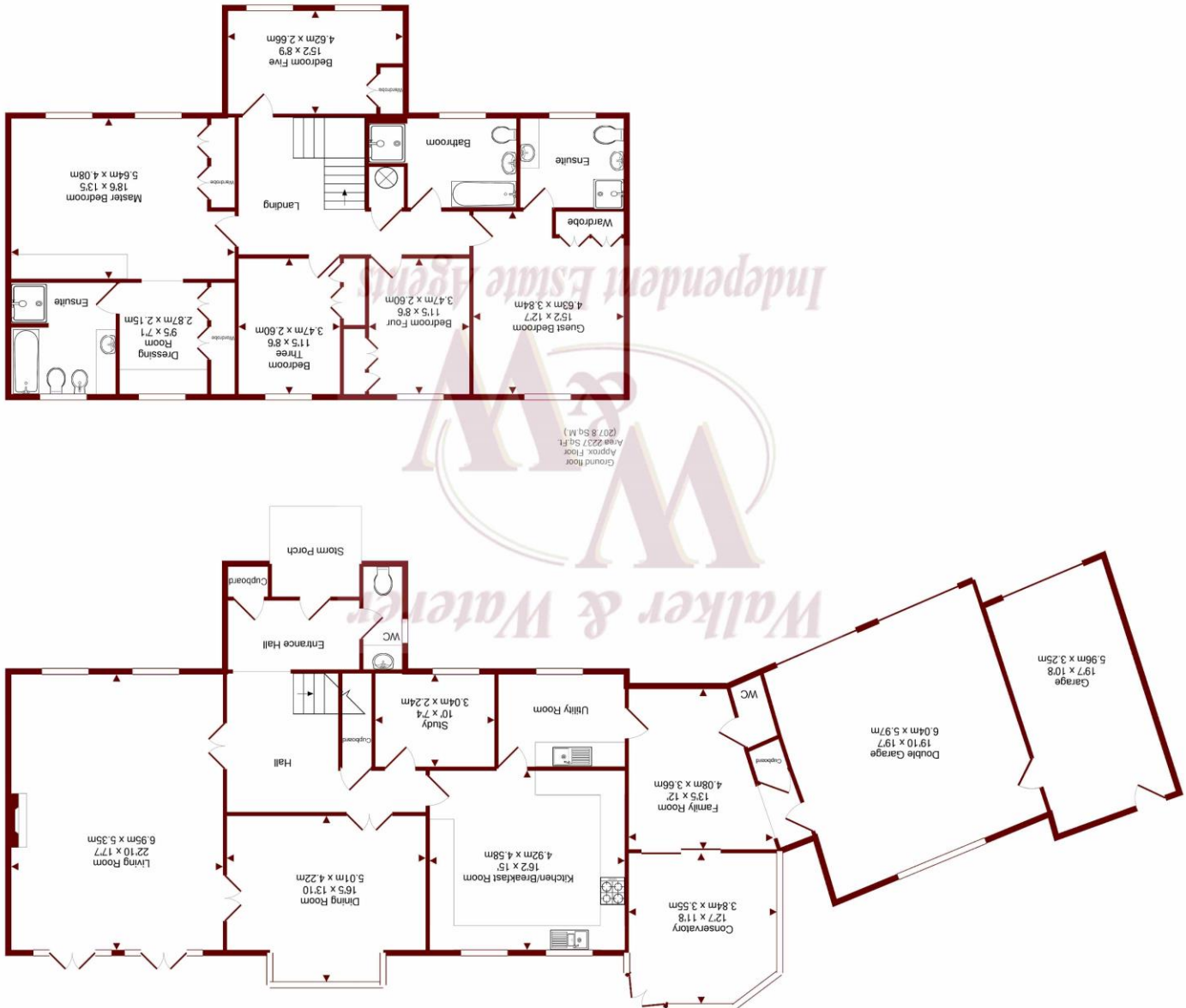


- Highly impressive master suite boasting views across the golf course & built in furniture continuing through to the dressing room including wardrobes, drawers and dressing table.
- The spacious en-suite comprises five piece white suite.
- Bedroom two is of an excellent size & also benefits an en-suite shower room.
- The three further bedrooms are all of double size, with two offering built in wardrobes.
- Bedroom four currently houses a sauna which is set to remain.
- Family bathroom comprising five piece white suite.
- Beautifully maintained lawn is flanked by mature trees and shrubbery giving 'in our opinion' an excellent degree of privacy and seclusion.
- A patio adjoins the property, ideal for alfresco dining overlooking the picturesque pond.









Whilst every attempt has been made to ensure the accuracy of the floor plan contained herein, measurements of doors, windows, rooms and any other items are approximate and no responsibility is taken for any error, omission, or mis-statement. This plan is for illustrative purposes only and should be used as such by any prospective purchaser. The services, systems and appliances shown have not been tested and no guarantee as to their operability or efficiency can be given.

Made with Metropix ©2017

Viewings strictly by appointment

01489 580800

whiteley@walkerwaterer.co.uk

E14 Whiteley Shopping Centre, Whiteley PO15 7PD