
SEA HOUSE

SEAVIEW, ISLE OF WIGHT, PO34 5BN



BROUGHT TO YOU THROUGH
COUNTRYHOMES
by Hose Rhodes Dickson

Country Homes
Hose Rhodes Dickson
138 High Street, Newport
Isle of Wight, PO30 1TY

Tel: 01983 538090
Email: countryhomes@hrdiw.co.uk

HRDCOUNTRYHOMES.CO.UK



Strutt & Parker
Head Office, 13 Hill Street
LONDON, W1J 5LQ

Tel: 020 7629 7282
Email: headoffice@struttandparker.com

STRUTTANDPARKER.COM



PHOTOGRAPHY AND CONTENT ON
PAGES 10 - 13 SUPPLIED BY VISIT ISLE OF WIGHT

“ ONE OF THE MOST
OUTSTANDING SHORESIDE
PROPERTIES IN THE COUNTRY ”



THE PROPERTY

Throw the doors and windows open and enjoy the sights and sounds of The Solent lapping against the foreshore of the picturesque Seagrove Bay.

A spectacular seafront home, built in 2009 to maximise its glorious Solent views within the sought after and tranquil Seagrove Bay. A huge ground floor family room provides an ideal open space for family time, to socialise and relax together. Large bay picture windows with fitted seating and double doors opening on to a large elevated terrace and onto the lawned gardens from which the ever-changing views across The Solent can be appreciated and direct access onto the beach. The first floor boasts four well fitted light and generous double bedrooms (three of which are en-suite). The two substantial principal suites and study open to a full length glazed balcony, offering an elevated position to absorb the sea vistas. A studio within Sea House provides ideal accommodation for extended family or an au pair.



FIRST FLOOR PLANS

Spacious Reception Hall with 'atrium' skylight allowing plenty of natural light to flood in.

Master Bedroom

A large double room with built in storage. Doors opening onto the full width glass balustrade balcony. **En-suite Bathroom** window to side, bath with shower over, basin fitted into vanity unit with mirror over, WC. Heated towel rail.

Bedroom 2

A large double room with built in storage. Doors opening onto the full width glass balustrade balcony. **En-suite Shower Room** window to side, shower, basin fitted into vanity unit with mirror over, WC. Heated towel rail.

Study

Glazed double doors open from the hallway and onto the balcony allowing light and the stunning sea views to be visible from the reception hall. 'Atrium' skylight allowing plenty of natural light to flood in providing an ideal room to enjoy the ambience of the peace and tranquillity.

Bedroom 3

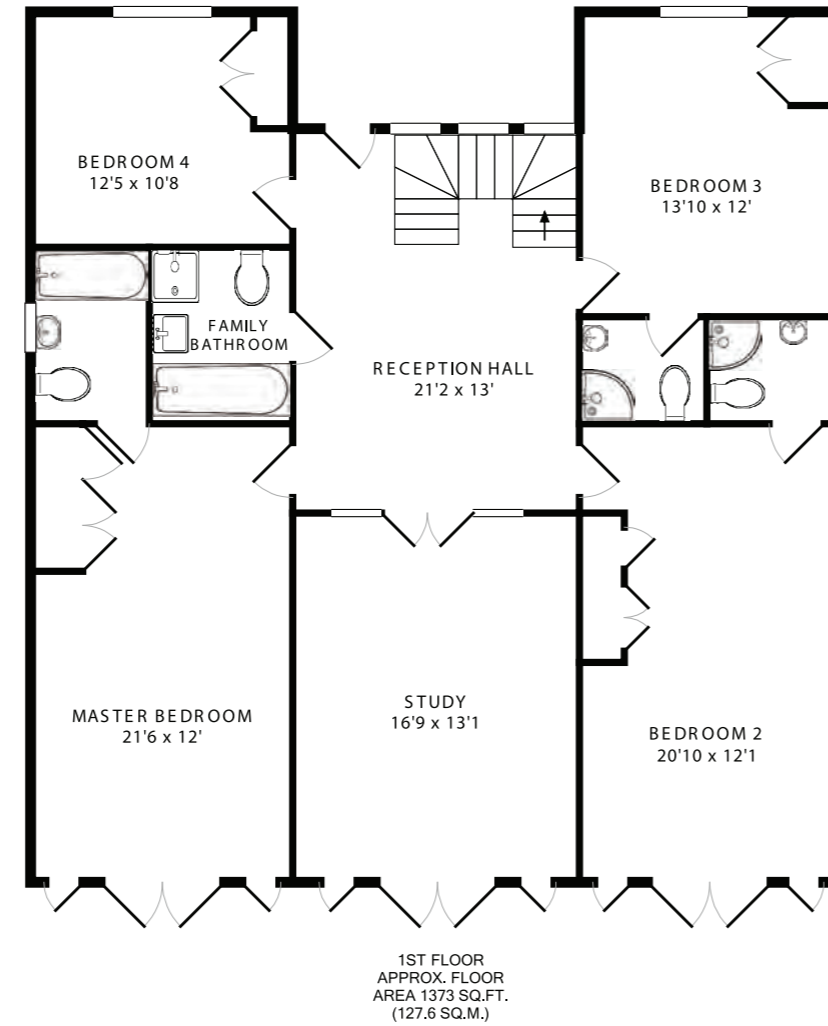
A good sized double room with dual aspect windows, fitted storage. Door to **En-suite Shower Room** velux window. Shower, basin fitted into vanity unit with mirror over, WC. Heated towel rail.

Bedroom 4

A double or twin room with window to front. Fitted storage.

Family Bathroom

Velux window. Bath with shower attachment, corner shower, basin fitted into vanity unit with mirror over, WC. Heated towel rail.



GROUND FLOOR PLANS

Custom made solid oak balustrade stairs lead down to the lower hall and opens out into the family room.

Stairs lead down into the spacious hallway.

Hallway

With doors to understairs cupboard, cloakroom with wc and basin. Door to Inner Hall with door to Utility Room and the outside.

Double doors open into:

A fantastically spacious family room, designed to maximise the wonderful views and allow access onto the gardens and foreshore. This sizeable space has been thoughtfully zoned enabling a family to relax, eat, socialise, play and cook whilst enjoying time together.

Sitting Room

A generous Sitting Room with the large bay window giving excellent sea views. Cream cast iron log burner to fireplace.

Family Room

A wonderful light room connecting the Kitchen and Sitting Room. Double glazed doors open both from the hallway and outwards to a paved terraced and allow the stunning views to be visible from the whole of this large room. Low level storage is fitted into this room, which provides an excellent socialising or games room for the whole family.

Kitchen/Dining Room

Bay window with fitted seating, windows to side. Cream wall and base units with work

surface over and inset 1 1/2 bowl stainless steel sink. Gas fired AGA. Electric oven with gas hob. Integral dishwasher. A large dining table fits into the large bay window so the views can be enjoyed whilst eating.

Utility Room

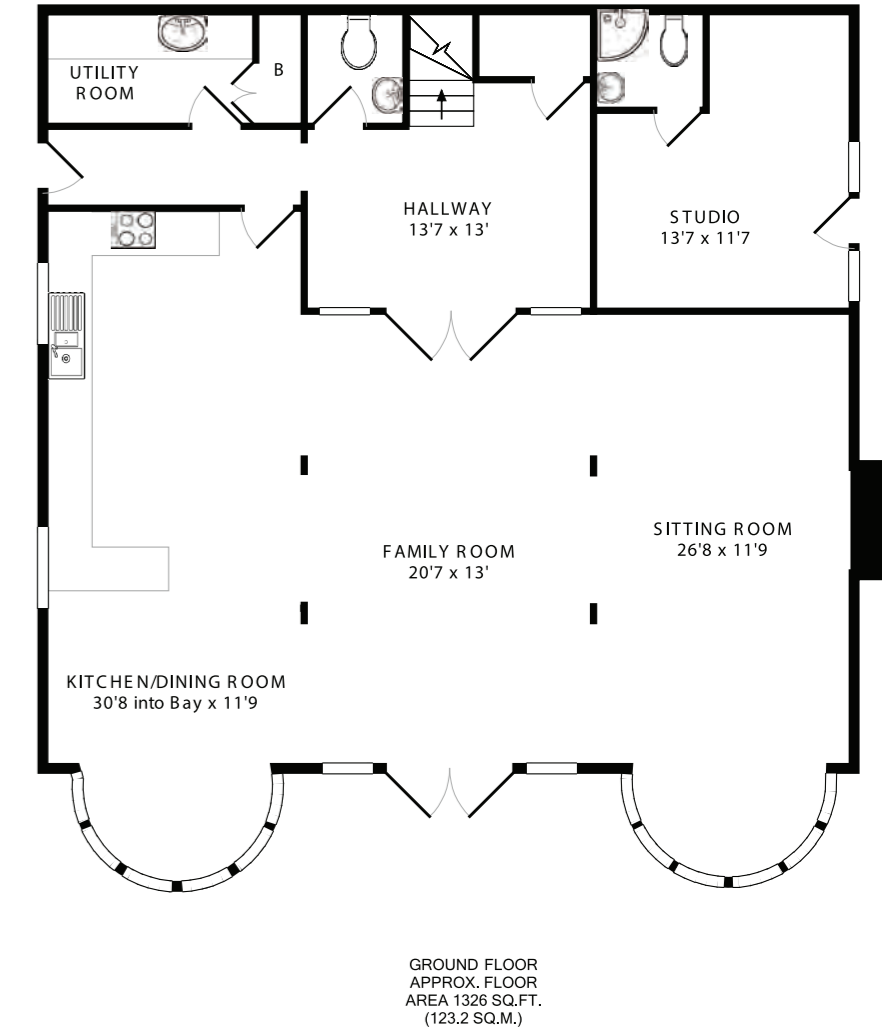
Fitted with a range of wall and floor units with inset stainless steel sink, space and plumbing for a washing machine, space for tumble drier and fridge freezer. Door to Boiler Cupboard.

Garden

Glazed double doors open on to a paved terrace which gives a stunning elevated view across the gardens to the sea. There are steps down to the gated access to the foreshore from the gardens. Outside shower with hot and cold water.

Heating and ventilation. A high pressured Vaillant boiler located in the Utility Room provides central heating via under floor heating. Each room has its own thermostat to control temperature. Solar panels supply hot water in conjunction with the gas boiler.

The velux windows on the bedroom floor are all controlled via remote controls.



“ A SPECTACULAR SEAFRONT HOME,
BUILT IN 2009 TO MAXIMISE ITS
GLORIOUS SOLENT VIEWS ”



OUTSIDE

The large lawn overlooking Seagrove Bay is perfect for evening entertainment and provides an ideal setting for family barbecues.

The rear garden is easily accessible from the front of the property and is thoughtfully arranged with an elevated well lit terrace leading from the family room, this provides stunning uninterrupted Solent views, an ideal place to enjoy an alfresco supper with friends and family. Children can play or relax on the predominately lawned rear garden which slopes gently down to the foreshore. With gated access to the sandy beach of Seagrove Bay at the bottom of the garden, children and adults alike could amuse themselves for hours either on the sand or enjoying watersports on The Solent. Ample space to the fore of Sea House allows plenty of room for parking and makes unloading for holidays simple.

THE LOCAL AREA

Seaview is located on the north-eastern corner of the Island, and is a unique village with extensive views across the sea and The Solent. Seaview has a reputation for being an upmarket resort. During the summer months the village becomes a busy centre for sailing and watersports.



Whilst Seaview often falls quiet during the winter months, as the season begins the village comes to life and there are lots of things to do locally. Much of Seaview's reputation as an Edwardian resort was built on its panoramic sea views and great sandy beaches and these are still two of its largest assets. The beach of Springvale offers some of the best of these views, straight across The Solent to Portsmouth and the Spinnaker Tower, and the famous Solent forts. To the rear of Springvale.

Seaview beach is the ideal launch platform for boats and watersports. Seaview Yacht Club, with their own Mermaid keelboat fleet and fleet of Seaview One Design Dinghies, providing waterfront access to experienced and novice sailors.

Conveniently located Seaview is a charming sought after coastal village, enjoys a good selection of shops, art galleries, churches and excellent restaurants, public houses and cafés, with a primary school close by at Nettlestone. As the name defines, the sea and sandy beaches are a Mecca for water sports and sailing, with the famous Yacht Club and well supported Sports Club being at the forefront of this.





ISLAND LIFE

Situated just off England's South coast with accessibility to London within 2 hours of the Isle of Wight Ferry connections. Enriched with history the Isle of Wight is known for its rolling countryside, coastal walks and stunning beaches, it truly offers the perfect lifestyle.

The stretch of water between the mainland and the Isle of Wight is known as The Solent; a vitally important commercial waterway, as well as being a scenic playground for watersports enthusiasts and host to the annual world-famous Cowes Week sailing regatta.

Known as the Garden Isle, with over half its countryside designated an Area of Outstanding Natural Beauty, there is so much to explore with its long sandy beaches and hidden coves.

Although relatively small in size (23 miles across), the Isle of Wight offers something all year round, countless pubs and restaurants across the Island, spectacular walks and some of the best cycle routes the UK has to offer. There are plenty of activities such as sailing in Seaview, Bembridge and the sailing Mecca of Cowes along with horse riding or just relaxing on the beach. The Isle of Wight is also home to a number of shooting clubs such as Rowborough offering partridge and mixed pheasant shoots in season and clubs offering clay pigeon facilities. The Island plays host to a number of events such as Bestival and the legendary Isle of Wight Festival (which in 1970 was one of the largest rock music events ever held). You really won't want to miss out.





Tenure

Leasehold running from 1902 on a 999 year lease.

Business Rates

UBR £10,500. £4809 payable 2013.

The owner currently holiday lets the property, additional information and video tour is available via their website.

www.seaviewseahouse.co.uk

BROUGHT TO YOU THROUGH

COUNTRYHOMES

by Hose Rhodes Dickson

Country Homes

Hose Rhodes Dickson, 138 High Street,
Newport, Isle of Wight, PO30 1TY

Tel: 01983 538090

Email: countryhomes@hrdiw.co.uk

HRDCOUNTRYHOMES.CO.UK

**STRUTT
& PARKER**

Strutt & Parker
Head Office, 13 Hill Street
LONDON, W1J 5LQ

Tel: 020 7629 7282

Email: headoffice@struttandparker.com

STRUTTANDPARKER.COM