

The Cabell

Four bedroom home

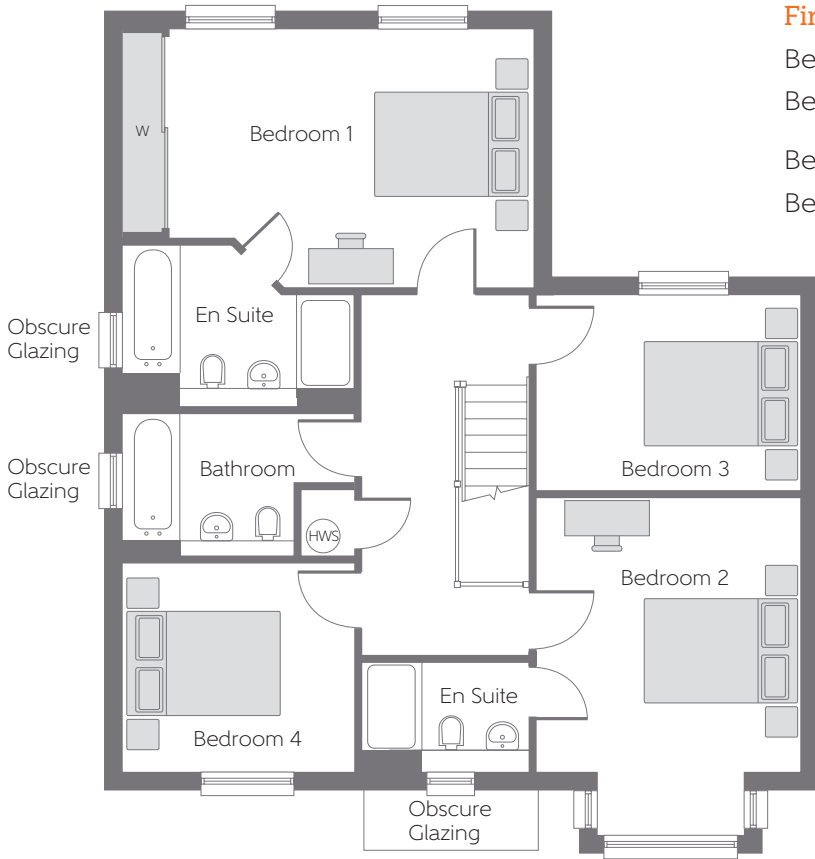


Bellway Homes (Wessex Division)
Bellway House, Embankment
Way, Castleman Business Centre,
Ringwood, Hampshire BH24 1EU

Telephone 01425 477666
Fax 01425 476774
www.bellway.co.uk

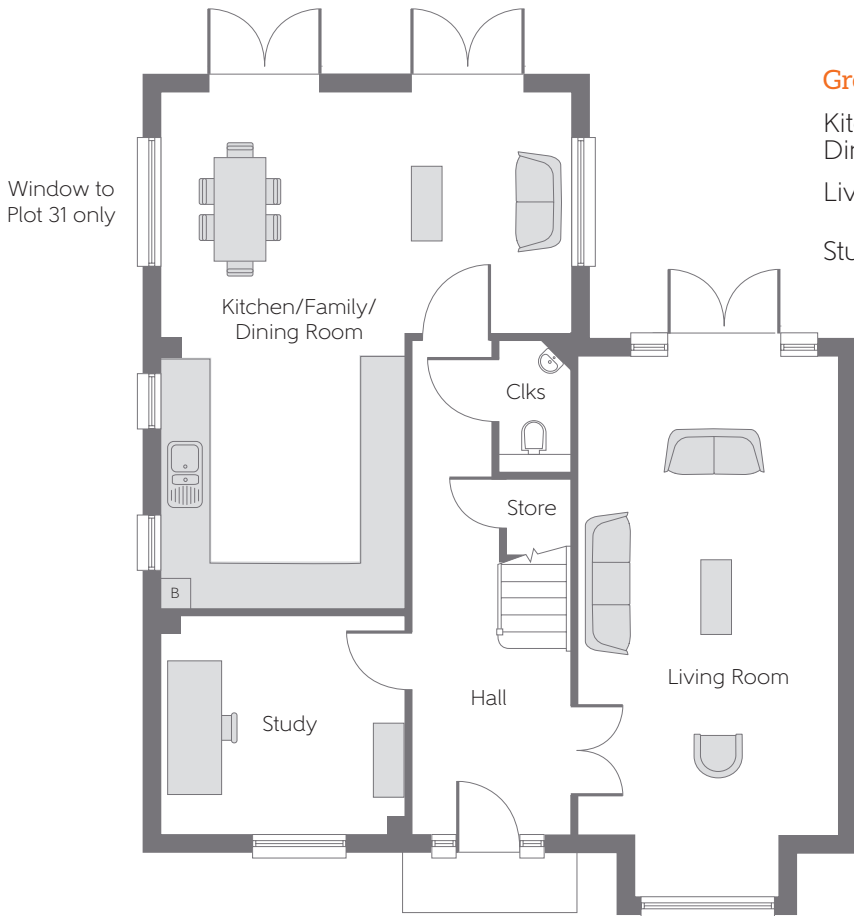
Bellway

First Floor



Bedroom 1	5.411m x 3.487m (max) (max)	17'9" x 11'5" (max) (max)
Bedroom 2	4.403m x 3.497m (max) (max) into bay	14'5" x 11'6" (max) (max) into bay
Bedroom 3	3.497m x 2.560m	11'6" x 8'5"
Bedroom 4	3.068m x 2.734m	10'1" x 9'0"

Ground Floor



Kitchen/Family Dining Room	6.911m x 5.411m (max) (max)	22'8" x 17'9" (max) (max)
Living Room	7.044m x 3.450m (max) (max) into bay	23'1" x 11'4" (max) (max) into bay
Study	3.225m x 2.850m	10'7" x 9'4"

B Boiler W Fitted Wardrobe --- Reduced Head Height HWS Hot Water Storage Clks Cloakroom

Some items shown in this key may be subject to change, and positions could vary from those indicated on this floorplan. Please refer to Sales Advisor for details of your selected plot. Computer generated image shown overleaf. External finishes, landscaping and configuration may vary from plot to plot. Please refer to Sales Advisor for further details. All dimensions are approximate and should not be used for carpet sizes, appliance spaces, or furniture. Furniture not to scale and all positions are indicative. We operate a policy of continuous improvement and individual features such as kitchen and bathroom layouts, doors, windows, garages and elevational treatments may vary from time to time. Consequently these particulars should be treated as general guidance only and do not constitute a contract, part of a contract or a warranty. H17 164121/02/17.