



12 GREAT MOLEWOOD

HERTFORD • HERTFORDSHIRE • SG14 2PN

Situated in an elevated position this beautiful four bedroom detached chalet style bungalow is located one of the most sought after areas in Hertford. The Adaptable accommodation comprises modern L-Shaped kitchen, two reception rooms, conservatory, four bedrooms, large staggered rear garden, Double garage and parking. The property is within a reasonable walking distance to the towns shops, schools and leisure facilities along with two mainline stations providing frequent services to London Kings Cross and London Liverpool Street.

The Accommodation:

Hallway

Living Room

Dining Room

Kitchen/Breakfast Room

Conservatory

Utility Room

Four Bedrooms

Bathroom and Shower Room

Double Garage plus off street parking

Rear Garden

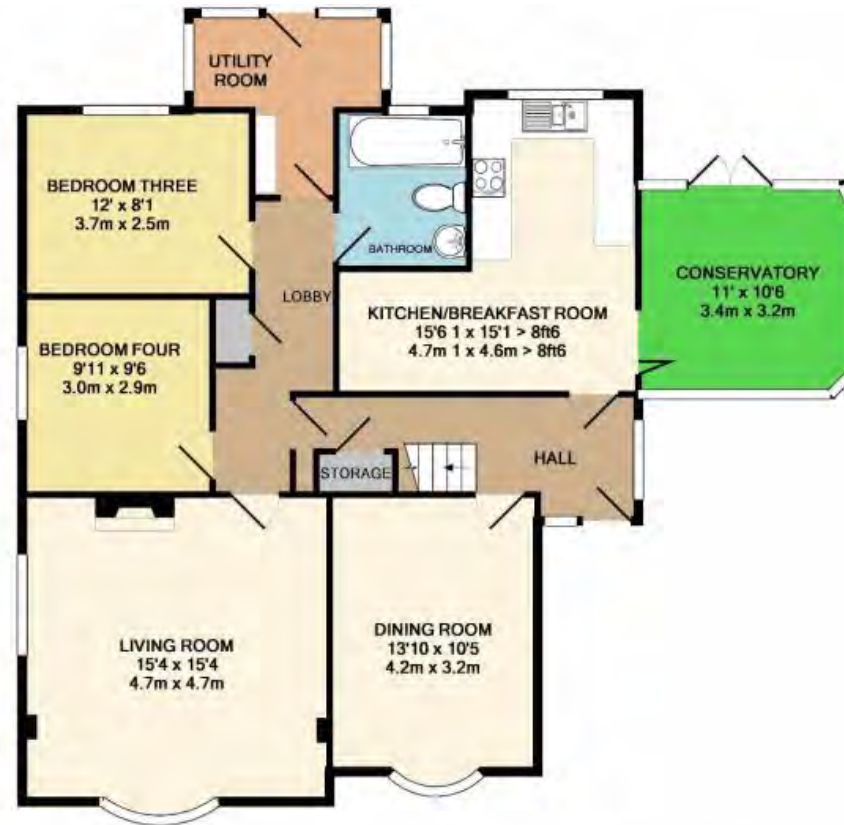




DOUBLE GARAGE
APPROX. FLOOR
AREA 480 SQ.FT.
(44.6 SQ.M.)



1ST FLOOR
APPROX. FLOOR
AREA 595 SQ.FT.
(46.9 SQ.M.)



GROUND FLOOR
APPROX. FLOOR
AREA 1151 SQ.FT.
(106.9 SQ.M.)

TOTAL APPROX. FLOOR AREA 2136 SQ.FT. (198.4 SQ.M.)

Whilst every attempt has been made to ensure the accuracy of the floor plan contained here, measurements of doors, windows, rooms and any other items are approximate and no responsibility is taken for any error, omission, or mis-statement. This plan is for illustrative purposes only and should be used as such by any prospective purchaser. The services, systems and appliances shown have not been tested and no guarantee as to their operability or efficiency can be given.
Made with Metropix ©2017









Please Note:

All descriptions, dimensions, reference to condition and necessary permissions for use, occupation and other details contained herein are for general guidance only and prospective purchasers should not rely on them as statements or representation of fact and must satisfy themselves as to their accuracy. Churchills employees or representatives do not have any authority to make or give any representation or warranty or enter into any contract in relation to the property.

Information



A10 3.3 miles

A1414 1.2 miles



Hertford North about 0.9 miles

Hertford East about 2.1 miles

Services: All mains services are connected

Tenure: Freehold

Council Tax Band: F

Local Council: East Herts District Council

Post Code: SG14 2PN

**N.B. There is £100 payable per annum
for road maintenance**



Churchills

01992 500151

www.churchills.online