



Crosstrees View

AT

RENAISSANCE
MEWS



Crosstrees View

AT

RENAISSANCE

MEWS



Crosstrees View is an exciting new development of one and two bedroom apartments available in the scenic town of Lymington, Hampshire.

These brand new homes are situated on Queen Katherine Road, within close proximity to the High Street, marina and local amenities.

Lymington is a well known sailing town with two large marinas Berthon and Haven and two sailing clubs. The town boasts the Royal Lymington Yacht Club which hosts a range of events for motor and sailing yachts throughout the year and a Junior Sailing programme perfect for beginners interested in sailing.



Lymington High Street, as well as being a mere 5 minute walk from Crosstrees View, has a lot to offer with an array of independent shops, designer boutiques, restaurants and coffee shops. Lymington Fish Bar is the perfect location for Friday night fish & chips, whilst the Ship Inn is perfectly located by the marina for people to enjoy freshly cooked pub-food whilst appreciating the fantastic views of Lymington marina.

There is a railway station situated near to the development running from Lymington Town to Brockenhurst and for drivers, the A337 links Lymington to Lyndhurst and the M27 motorway. These homes are also a 40 minute drive to Southampton centre perfect for a day shopping in West Quay and with regular ferries running from Lymington to Yarmouth, getting to and from the Isle of Wight couldn't be easier.

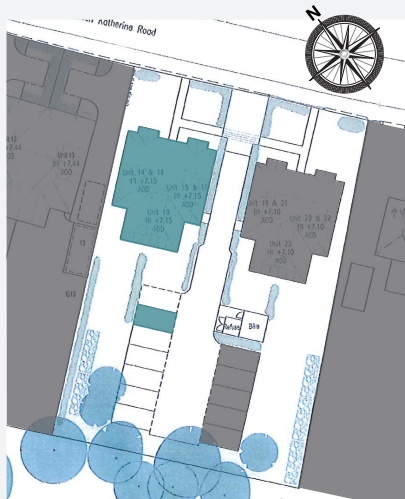




Crosstrees View

AT

RENAISSANCE MEWS



Plot 14

The Cedar

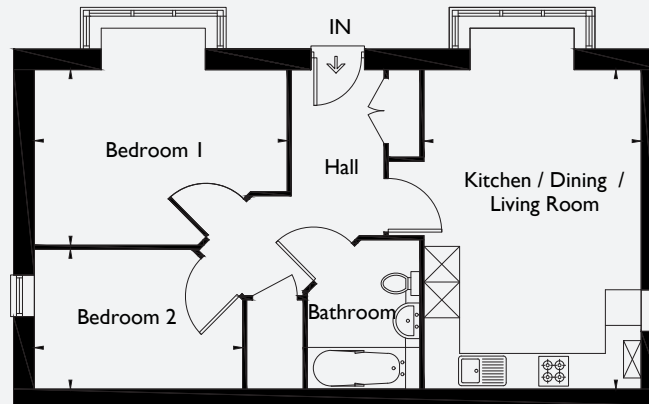
2 bed apartment

Kitchen / Living / Dining Room	5.39m x 3.67m	17'8 x 12'0
Bedroom 1	4.23m x 2.95m	13'11 x 9'8
Bedroom 2	3.47m x 2.37m	11'5 x 7'9

Approximate Gross Internal Area

57.2 sq m / 616 sq ft

Ground Floor



NOTE: All plans are for illustrative purposes only and are not to scale. Consumer protection from unfair trading regulations NOTE: Purchasers are warned that all plans and illustrations are for guidance only. Alterations and variations can and do occur during the process of the works but all purchasers will be shown floor plans before reservation, and measure-up appointments will be made when suitable.

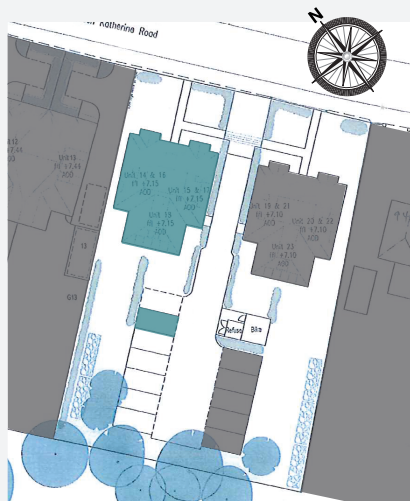
2
BED



Crosstrees View

AT

RENAISSANCE MEWS



Plot 15

The Oak

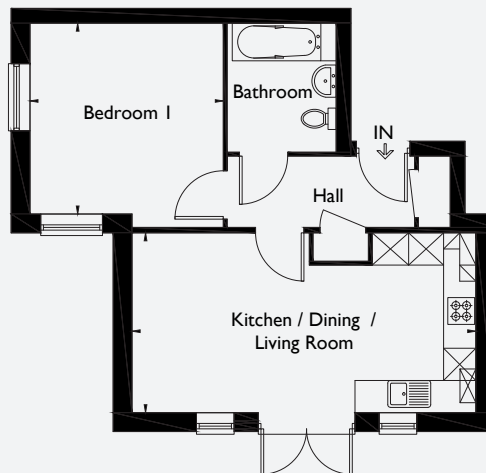
1 bed apartment

Kitchen / Living / Dining Room	6.38m x 3.36m	20'11 x 11'0
Bedroom 1	3.62m x 3.53m	11'10 x 11'7

Approximate Gross Internal Area

46.0 sq m / 495 sq ft

Ground Floor



NOTE: All plans are for illustrative purposes only and are not to scale. Consumer protection from unfair trading regulations NOTE: Purchasers are warned that all plans and illustrations are for guidance only. Alterations and variations can and do occur during the process of the works but all purchasers will be shown floor plans before reservation, and measure-up appointments will be made when suitable.

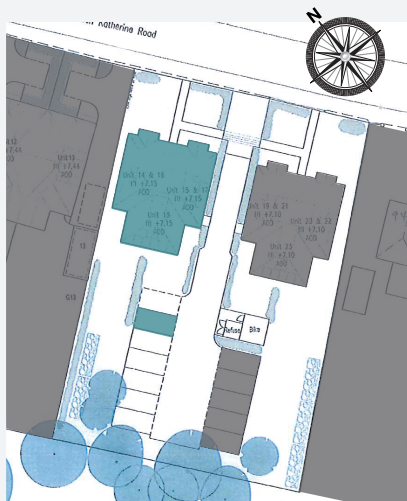
1
BED



Crosstrees View

AT

RENAISSANCE MEWS



Plot 16

The Elm

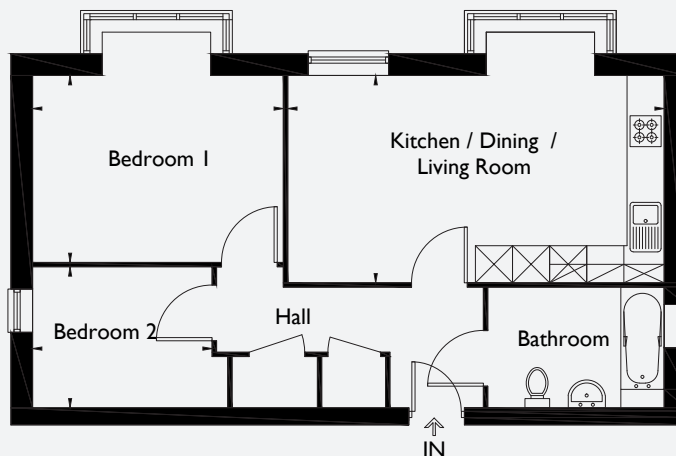
2 bed apartment

Kitchen / Living / Dining Room	6.09m x 3.37m	20'0 x 11'1
Bedroom 1	4.04m x 3.04m	13'3 x 10'0
Bedroom 2	2.89m x 2.28m	9'6 x 7'6

Approximate Gross Internal Area

57.2 sq m / 616 sq ft

First Floor



NOTE: All plans are for illustrative purposes only and are not to scale. Consumer protection from unfair trading regulations NOTE: Purchasers are warned that all plans and illustrations are for guidance only. Alterations and variations can and do occur during the process of the works but all purchasers will be shown floor plans before reservation, and measure-up appointments will be made when suitable.

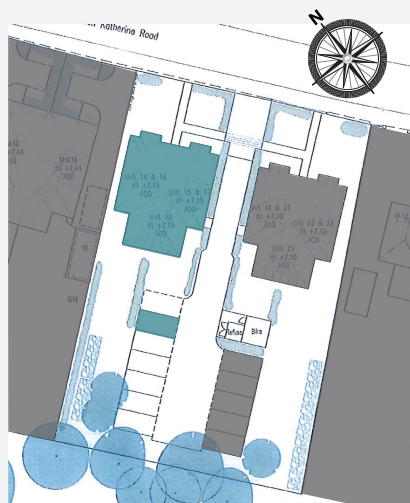
1
BED



Crosstrees View

AT

RENAISSANCE MEWS



Plot 17

The Hemlock

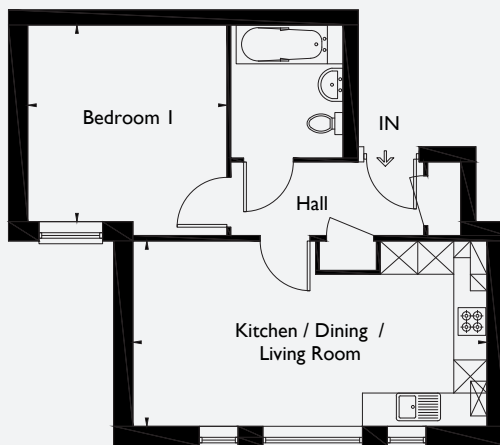
1 bed apartment

Kitchen / Living / Dining Room	6.38m x 3.36m	20'0 x 11'1
Bedroom 1	3.62m x 3.53m	11'10 x 11'7

Approximate Gross Internal Area

46.0 sq m / 495 sq ft

First Floor



NOTE: All plans are for illustrative purposes only and are not to scale. Consumer protection from unfair trading regulations NOTE: Purchasers are warned that all plans and illustrations are for guidance only. Alterations and variations can and do occur during the process of the works but all purchasers will be shown floor plans before reservation, and measure-up appointments will be made when suitable.

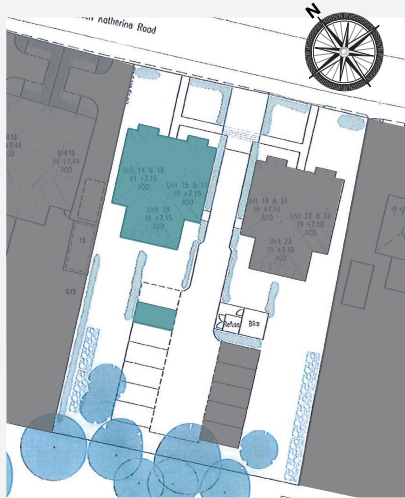
1
BED



Crosstrees View

AT

RENAISSANCE MEWS



Plot 18

The Rosewood

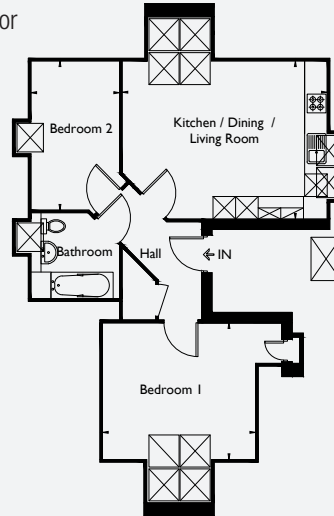
2 bed apartment

Kitchen / Living / Dining Room	5.44m x 4.21m	17'10 x 13'10
Bedroom 1	4.04m x 3.63m	13'3 x 11'1
Bedroom 2	3.95m x 2.35m	13'0 x 7'9

Approximate Gross Internal Area

64.8 sq m / 698 sq ft

Second Floor



NOTE: All plans are for illustrative purposes only and are not to scale. Consumer protection from unfair trading regulations NOTE: Purchasers are warned that all plans and illustrations are for guidance only. Alterations and variations can and do occur during the process of the works but all purchasers will be shown floor plans before reservation, and measure-up appointments will be made when suitable.

2
BED

SPECIFICATION



FEATURES INCLUDE

Carpets to all living areas and vinyl flooring in kitchen & bathroom* • Neutral decor with white painted walls • Allocated parking • 12 year NHBS warranty
UPVC windows and doors • Communal Satellite/Aerial

KITCHEN

Fully fitted kitchen • Built in oven with hob

BATHROOM

White bathroom suite

EXTERNAL

Communal gardens • Cycle storage • Small patio**

*Plot 15 & 18 - all vinyl to main living/dining/kitchen areas **Plot 15 only





SAT NAV postal code SO41 3RY

www.radianhomes.co.uk/crosstreesview



@RadianHomes

Telephone: 0800 145 6663

Whilst every effort has been made to ensure that the information in this brochure is correct, it is designed specifically as a guide and Radian Homes reserves the right to amend the specification as necessary and without notice. This does not constitute or form any part of a contract or sale. Digital illustration is indicative only. Photos for illustration use only June 2016

