



TK International  
020 7794 8700  
www.t-k.co.uk

Residential Sales  
Residential Lettings  
Property Management

Sales Office:  
9 Heath Street  
Hampstead  
London NW3 6TP

Lettings Office:  
16-18 Heath Street  
Hampstead  
London NW3 6TE

E: sales@t-k.co.uk  
E: lettings@t-k.co.uk

@tk\_int



## West Heath Drive Golders Hill Park NW11

An imaginatively remodelled and extended six bedroom semi-detached 'Arts and Craft' family house of some 3,851 gross sq ft, offered for sale in excellent decorative condition and located on this ever popular road close by the open spaces of Golders Hill Park.

The generous accommodation is arranged over three floors plus a basement, and provides extensive reception space on the ground floor including a 27' reception room open to a 24' dining area which in turn is open plan kitchen. Additionally on this floor is a further 20' formal reception room, office and guest w.c. The first floor offers a master suite comprising bedroom, en-suite bathroom, dressing room and day room, a further bedroom suite and third bedroom and family bathroom, with three further bedrooms (including a two storey teenagers bedroom!) and a further family bathroom.

There is an extensive utility and storage area in the basement, a landscaped 53' West facing garden and off street parking for two cars.

**£3,600,000**

**SOLE AGENT**

**Freehold**

















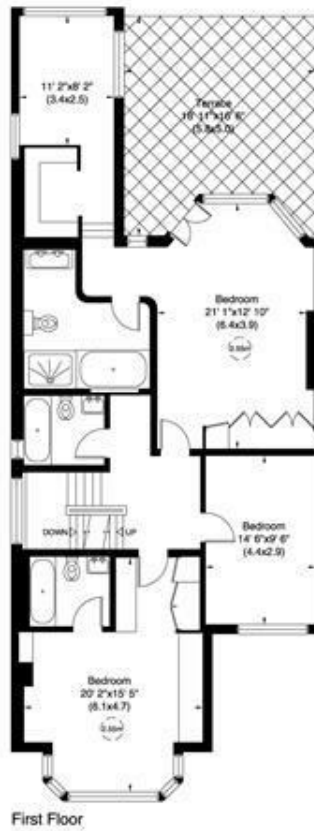


## West Heath Drive, NW11

Gross internal area (approx.)  
 358 Sq m (3851 Sq ft) Including Under 1.5m and Mezzanine  
 333 Sq m (3579 Sq ft) Excluding Under 1.5m and Mezzanine

For identification only, Not to Scale

Floor Plan by **capital group** 020 8671 7722



Not to scale, for guidance only and must not be relied upon as a statement of fact. All measurements and areas are approximate only (and have been prepared in accordance with the current edition of the RICS Code of Measuring Practice)