



TK International
020 7794 8700
www.t-k.co.uk

Residential Sales
Residential Lettings
Property Management

Sales Office:
20 Heath Street
Hampstead
London NW3 6TE

Lettings Office:
16-18 Heath Street
Hampstead
London NW3 6TE

E: sales@t-k.co.uk
E: lettings@t-k.co.uk
@tk_int



West Heath Close Hampstead NW3

A substantial six bedroom detached family house 4666sq ft occupying a prominent corner position close to Hampstead Heath.

The house is offered in good decorative condition and the principal accommodation is arranged over three floors comprising six double bedrooms, five bathrooms (four en-suite), three reception rooms and a 21'3 kitchen/breakfast room.

The garden level has a self contained apartment consisting of two bedrooms, bathroom, reception room and kitchen/breakfast room. The property is further enhanced by a large terrace lawned garden, raised terrace and a carriage drive with ample parking for numerous cars.

The shops and transport facilities of Finchley Road (Jubilee/Metropolitan Lines) and Hampstead Village (Northern Line) are within easy access.

£5,450,000

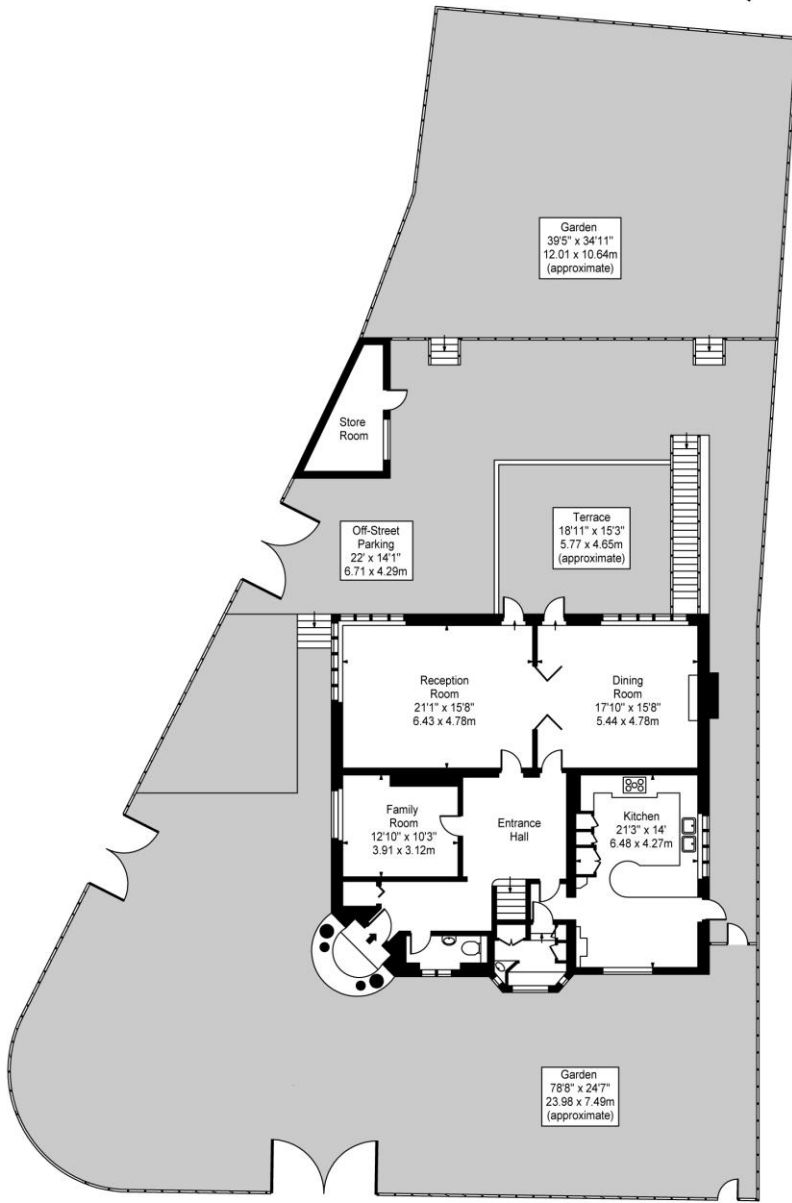
Freehold







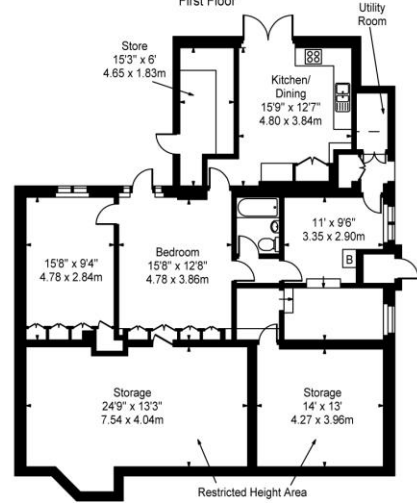
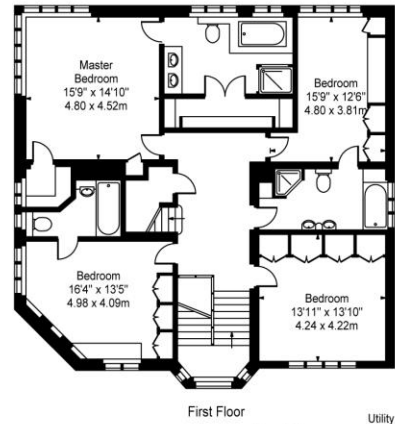
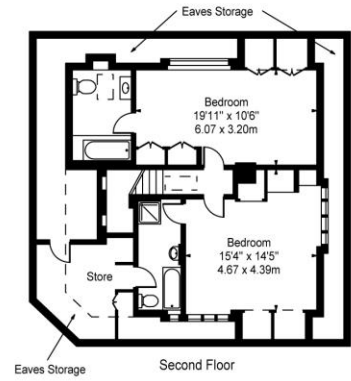
Manor House,
West Heath Close, NW3



Ground Floor

Approx Gross Internal Area 4666 Sq Ft - 433.5 Sq M
(Excluding Eaves Storages)

For Illustration Purposes Only - Not To Scale
www.goldiens.co.uk
Prepared for Chestertons
Ref. No. 001733



Lower Ground Floor