



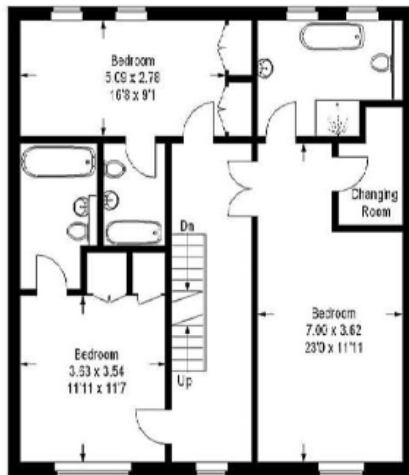
This stunning family home in the sought after St James Development. The property offers a luxury white gloss fitted kitchen with granite worktops and Bosch appliances; 3 reception rooms, utility room, 6 double bedrooms, 4 bathrooms. Wood oak engineered flooring to the ground floor, neutral carpeting to the 1st and 2nd floor. The property has a double length garage, alarm and good sized garden. The house is well located for easy access to Surbiton BR, walks along the River Thames and array for excellent locals schools.



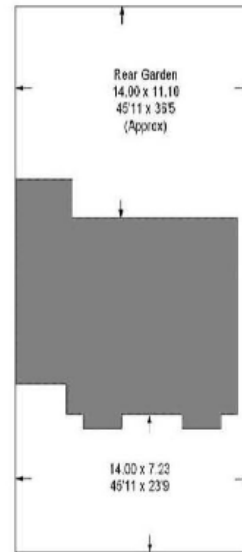
20 Jennings Close Long Ditton, KT6 5RB



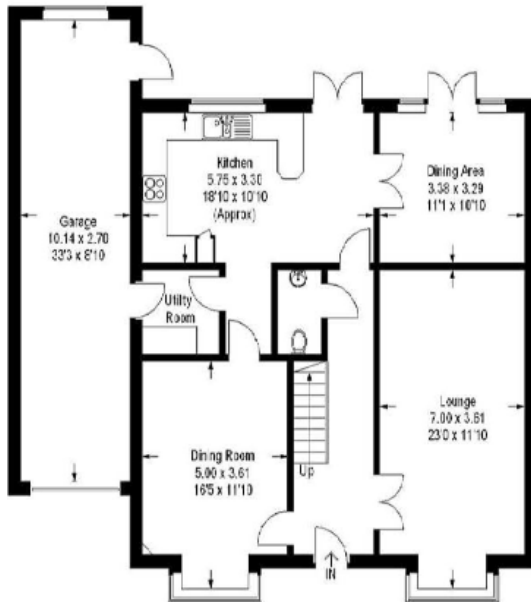
Approximate Gross Internal Area (including Garage)
300.6 sq m / 3268 sq ft



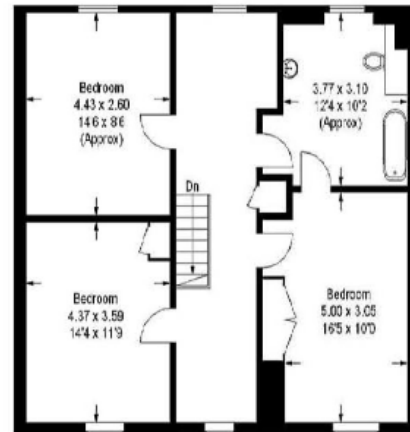
First Floor



(Not To Scale)
Site Plan



Ground Floor



Second Floor

Illustration for identification purposes only, measurements are approximate, not to scale.

Floorplan by: www.epc4u.info

We have prepared these sales particulars as a general guide after a brief inspection of the property and with information supplied by the Vendors. No detailed survey was carried out nor were the services and appliances tested. Photographs are not comprehensive and no assumption should be made that the property remains as displayed.

The floor plans are for representation purposes only as defined by the RICS Code of Measuring Practice. Measurements, room shapes and sizes are approximate and must not be relied on. No responsibility is taken for errors or omissions. All fixtures and fittings, carpets, curtains/blinds, lighting and kitchen equipment, whether fitted or not, are deemed to be removable by the Vendors unless specifically itemised. No representation is given as to the title of the property.



HIGHER VALUES

HJC Surbiton 020 8390 0404 | HJC Lettings 020 8390 9290 | HJC Thames Ditton 020 8398 3707
surbiton@hjc.co.uk | lettings@hjc.co.uk | thamesditton@hjc.co.uk

Reg no: 05272208 | VAT no: 720 5720 65