

ENNISMORE GARDENS

KNIGHTSBRIDGE • SW7



ENNISMORE GARDENS

KNIGHTSBRIDGE • SW7

A unique period freehold townhouse situated in this exclusive Knightsbridge address. The property benefits from magnificent entertainment areas, excellent ceiling heights and a passenger lift.

The property features a generous drawing room with high ceilings and six double bedrooms. The house also enjoys keyed access to the communal gardens and uninterrupted views from the front and rear.

6 Bedrooms (3 en suite) • 2 Further Bathrooms
Drawing Room • Dining Room (with Food Lift)
Kitchen/ Breakfast Room • Study • Lift • Guest Cloakroom
2 Vaults • Roof Terrace

Ennismore Gardens is located to the north of the Brompton Road and just to the south of Hyde Park and is within walking distance of all the many international amenities of the Knightsbridge area.

Local Authority: City of Westminster

Tenure: Freehold

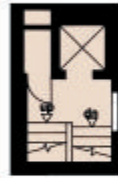
Guide Price: £11,250,000



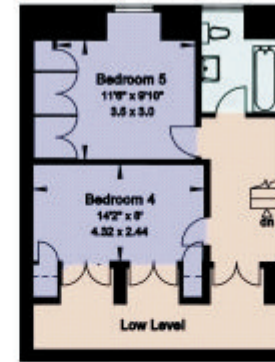


Approximate Gross Internal Floor Area
376 sq.m./ 4,057 sq.ft.

This plan is for guidance only and must not be relied upon as a statement of fact. Attention is drawn to the Important Notice on the last page of the text of the Particulars



Lower Second Floor



Fourth Floor



Lower Ground Floor



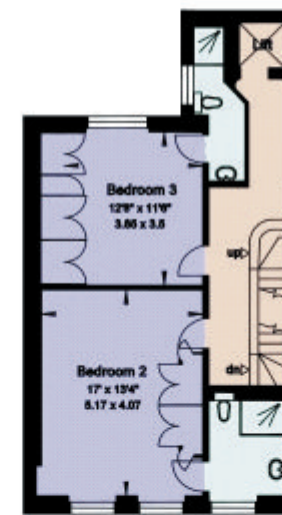
Raised Ground Floor



First Floor



Second Floor



Third Floor

