

AN EXCEPTIONAL
FAMILY HOUSE
IN PELHAM CRESCENT



An elegant Grade II listed, stucco fronted freehold house in one of Knightsbridge's finest addresses, positioned on the favoured west crescent with a spectacular west facing garden.

PELHAM CRESCENT





The house features an elegant dining room with beautifully hand painted shutters with views over the communal gardens, a west facing Bulthaup kitchen and breakfast room which leads directly onto the 65 foot landscaped garden. The first floor provides a formal double drawing room with long leafy views from both front and rear aspects. The second floor is dedicated to the master bedroom with a large en suite bathroom with both a bath and shower. The top floor provides three further bedrooms and a family bathroom. There are also two studies on the half landings. The lower ground floor comprises a large room with en suite shower room which could be used as a bedroom, family room or study and leads directly on to the garden. There is a further bedroom suite with a kitchenette and independent access which could make the ideal guest/staff accommodation. Furthermore the laundry room, wine cellar and vaults are located on the lower ground floor also.



ACCOMMODATION

Master Bedroom (En Suite Bathroom)

5 Further Bedrooms (2 En Suite Bathrooms)

Family Bathroom

Double Drawing Room

Dining Room

Kitchen

Conservatory Breakfast Room

2 Studies

Kitchenette

Laundry Room

Guest Cloakroom

Vaults

Wine Cellar

Separate Entrance at Lower Ground Level

Landscaped Garden

Access to Communal Garden

TERMS

Local Authority: The Royal Borough of Kensington and Chelsea

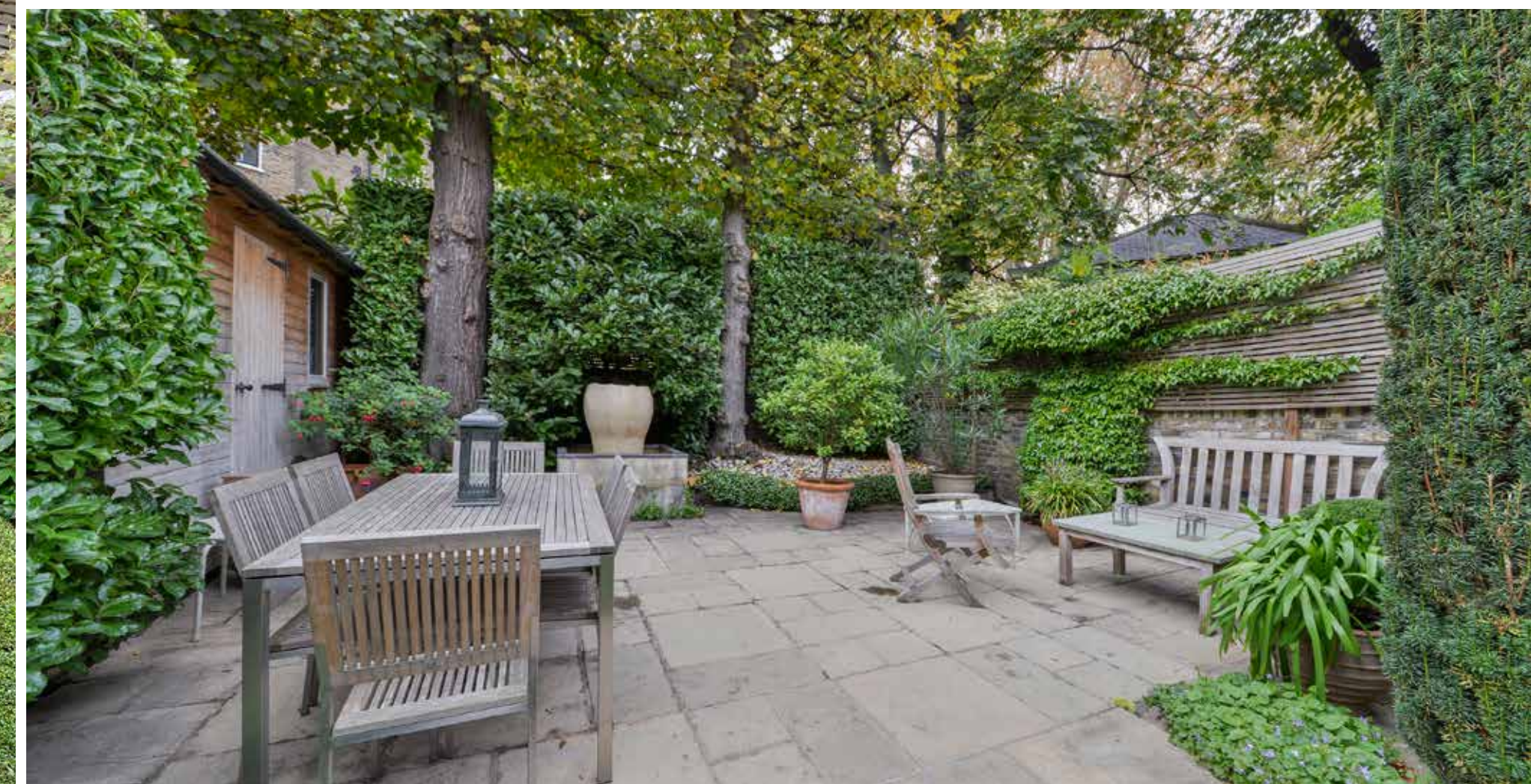
Tenure: Freehold

Price on Application





Pelham Crescent is one of the most sought after addresses in Knightsbridge, located in immediate proximity to many of Knightsbridge's most fashionable restaurants and international boutiques while situated in a private residential enclave.

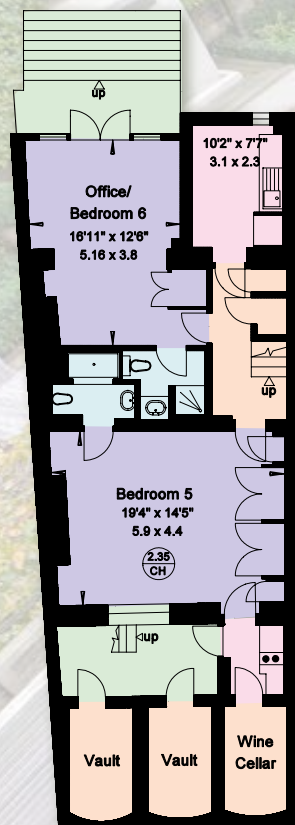


Gross internal area:
325 sq metres/3,500 sq feet
(Excluding external vaults & lofts)

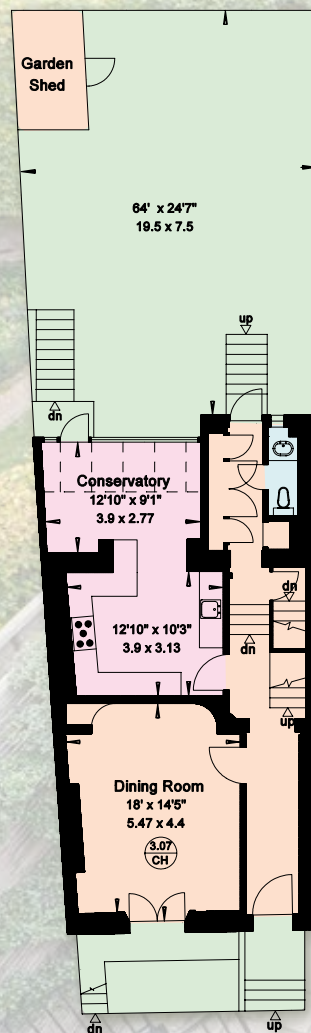
Loft:
45 sq metres/486 sq feet

External vaults:
9 sq metres/100 sq feet

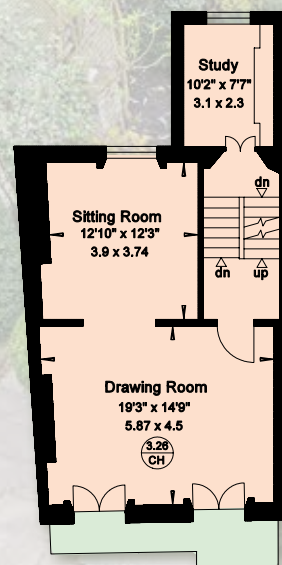
Total area:
379 sq metres/4,086 sq feet



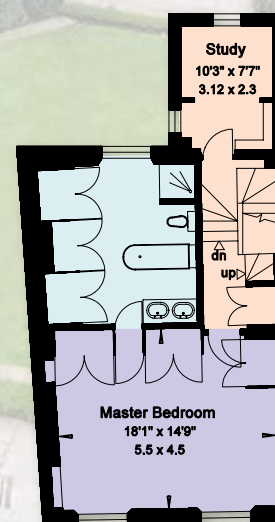
Lower Ground Floor



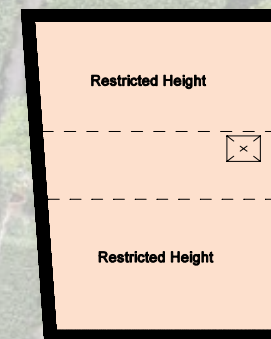
Ground Floor



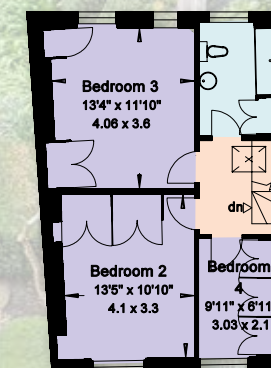
First Floor



Second Floor



Loft



Third Floor

Important Notice

1. Particulars: These particulars are not an offer or contract, nor part of one. You should not rely on statements by Knight Frank LLP in the particulars or by word of mouth or in writing ("information") as being factually accurate about the property, its condition or its value. Neither Knight Frank LLP nor any joint agent has any authority to make any representations about the property, and accordingly any information given is entirely without responsibility on the part of the agents, seller(s) or lessor(s). 2. Photos etc: The photographs show only certain parts of the property as they appeared at the time they were taken. Areas, measurements and distances given are approximate only. 3. Regulations etc: Any reference to alterations to, or use of, any part of the property does not mean that any necessary planning, building regulations or other consent has been obtained. None of the services or appliances have been tested and no warranty is given or is to be implied that they are in working order. A buyer or lessee must find out by inspection or in other ways that these matters have been properly dealt with and that all information is correct. 4. VAT: The VAT position relating to the property may change without notice. Particulars dated April 2017. Photographs dated November 2016.

Knight Frank LLP is a limited liability partnership registered in England with registered number OC305934. Our registered office is 35 Baker Street, London, W1U 8AN, where you may look at a list of members' names.

Brochure by **capital group** 020 8671 5448



Knightsbridge
020 7591 8600

KnightFrank.co.uk