

CLINK WHARF

SOUTHBANK • LONDON • SE1





CLINK WHARF

SOUTHBANK • LONDON • SE1

A unique and sensational duplex apartment in the heart of Borough Market and with one of the largest outdoor river facing terraces in Central London

An absolutely sensational 7,051 sq.ft. New York loft style property offering truly unique accommodation in one of the most vibrant parts of the city. Located adjacent to the Thames, affording stunning river views from Canary Wharf, Tower Bridge, to St Paul's and the City, this massive apartment boasts 5 bedrooms and 5 bathrooms, across two floors with exceptional living space.

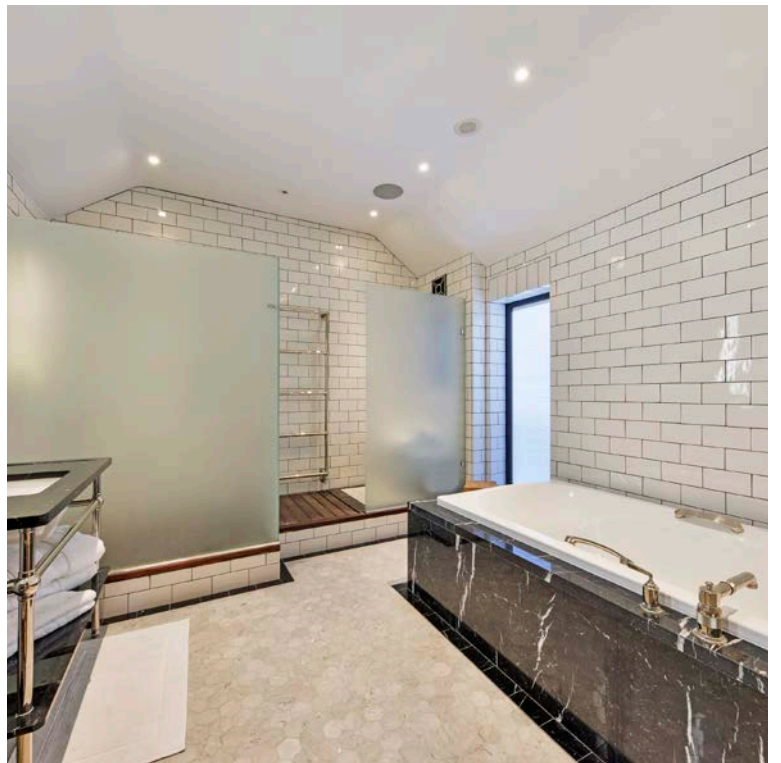
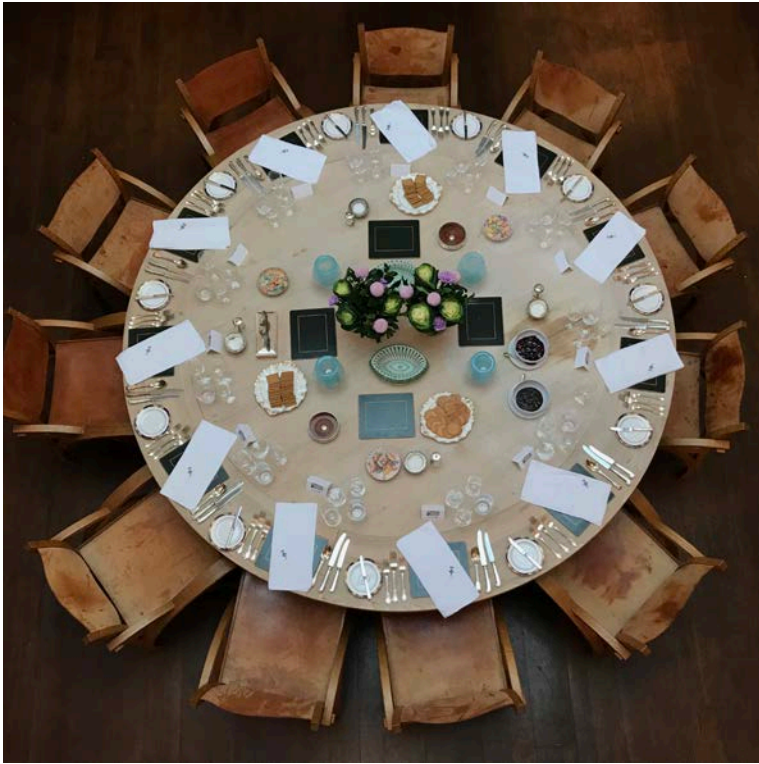
Features

Over 7,000 sq.ft. • Abundance of period features
Double volume reception • River facing terrace
Gym • Utility room • Wine storage
Parking for 2 cars • Very private

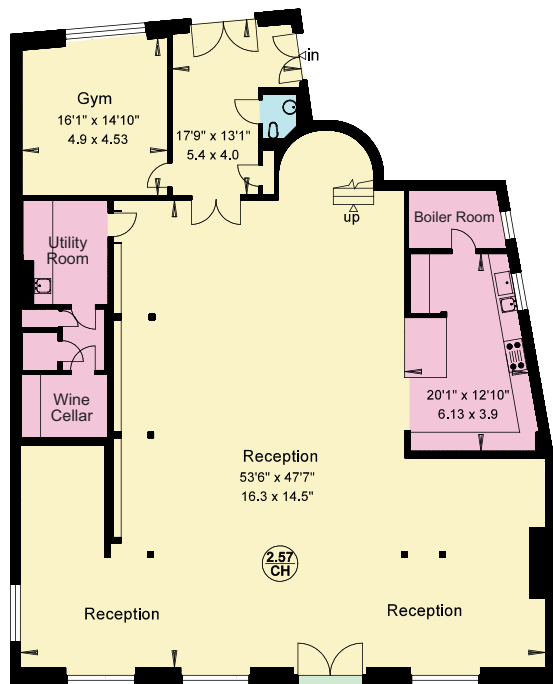


These particulars are intended only as a guide and must not be relied upon as statements of fact. Your attention is drawn to the Important Notice on the last page of the text.









CLINK WHARF

SOUTHBANK • LONDON • SE1

Approx. Gross Internal Floor Area: 655 sq.m. / 7,051 sq.ft. (Excluding Void)

Large Roof Terrace: 79 sq.m. / 851 sq.ft.

Total External Areas: 123 sq.m. / 1,331 sq.ft.

- Reception
- Kitchen/Utility
- Bedroom
- Bathroom
- Outside Space

This plan is for guidance only and must not be relied upon as a statement of fact. Attention is drawn to the Important Notice on the last page of the text of the Particulars.









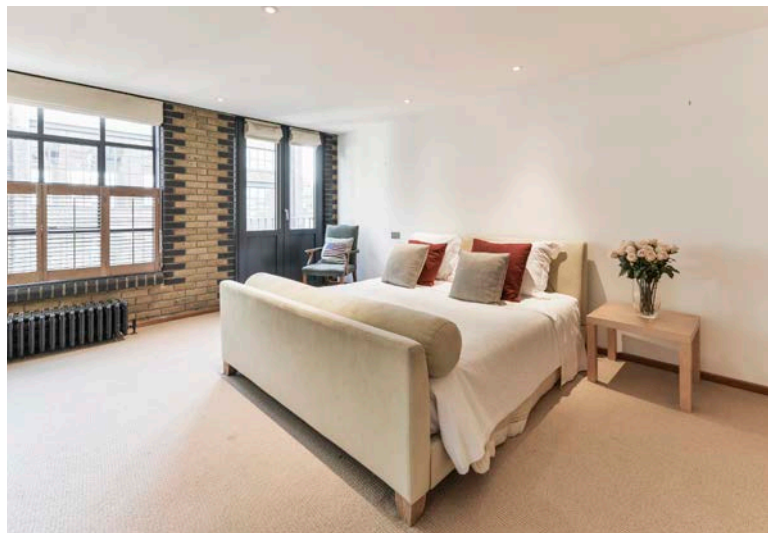
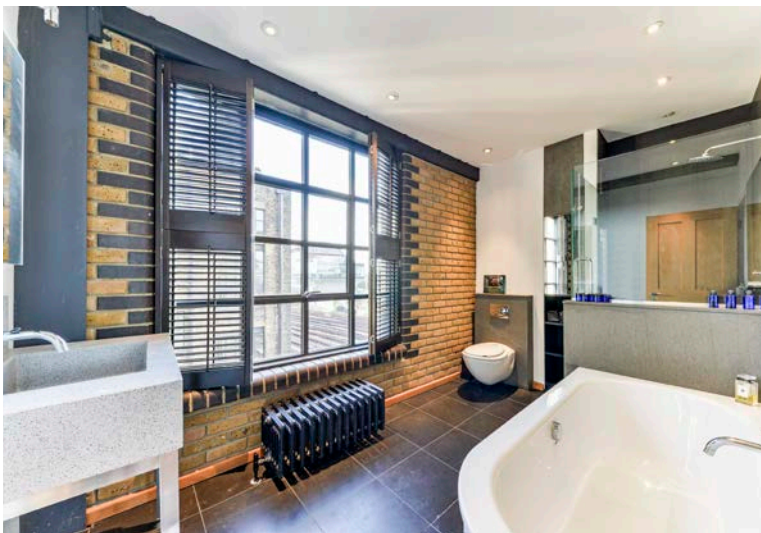
Characterful features abound, wooden flooring and bespoke doors and joinery. Each room enjoys its own personality and offers spectacular views of the city and surrounding areas. There is an abundance of outside space, the most coveted of which is the river facing roof terrace accessed from the galleried reception area and master bedroom. Landscaped and private, this terrace offers city skyline views rarely found in the capital and makes a fabulous entertaining area or private sun trap.

The kitchen is well equipped with high end appliances and granite work surfaces, semi open plan, onto the vast main reception space, part of which is double height and bathed

in sunlight from the glass skylight ceiling, making a dramatic feature in this already impressive space.

There is a further family room and kitchen also with wonderful river views and beautiful windows and a balcony over the Thames. All bedrooms have ensuite bathrooms. There is a guest WC and a gym and study area.

This property is accessed via an unassuming street entrance with lift, affording a very private residence tucked away, almost a secret doorway to one of the most extraordinary properties in London. There is secure garage parking for two cars and a choice of public transport nearby.

















Location



Entertainment

Within a 1 mile radius, there is The Tate Modern, Shakespeare's Globe Theatre, Old Vic Theatre and Royal Festival Hall, to name a few.



Shopping

With Borough Market on the doorstep and the West End within easy reach, this property is well-located for shopping in the capital.



Dining

There are a number of popular restaurants and bars located on Southbank. The impressive French restaurant, Pont de la Tour is only a short walk along the river. Borough Market boasts an array of eateries including Roast



Train

London Bridge has well-serviced transport links with the Jubilee and Northern lines enabling easy access throughout the city of London.



Airport

30 minutes by tube and DLR to London City Airport, with flights to Europe, UK and internationally.



Knight Frank LLP

Unit C1 Vista
346 Queenstown Road
London SW11 8BY

Tel: +44 (0)20 7861 1528

riverside@knightfrank.com

Knight Frank LLP

7a Albion Riverside
8 Hester Road
London SW11 4AX

Tel: +44 (0)20 3811 2634

riverside@knightfrank.com

Important notice

1. Particulars: These particulars are not an offer or contract, nor part of one. You should not rely on statements by Knight Frank LLP in the particulars or by word of mouth or in writing ("information") as being factually accurate about the property, its condition or its value. Neither Knight Frank LLP nor any joint agent has any authority to make any representations about the property, and accordingly any information given is entirely without responsibility on the part of the agents, seller(s) or lessor(s).
2. Photos etc: The photographs show only certain parts of the property as they appeared at the time they were taken. Areas, measurements and distances given are approximate only.
3. Regulations etc: Any reference to alterations to, or use of, any part of the property does not mean that any necessary planning, building regulations or other consent has been obtained. A buyer or lessee must find out by inspection or in other ways that these matters have been properly dealt with and that all information is correct.

4. VAT: The VAT position relating to the property may change without notice.

5. Grammar School catchment areas: Any reference to a property being in a specific catchment area should not be relied upon as a statement of fact and should be verified with the appropriate Local Education Authority.

Particulars dated: September 2017.

Photographs by Ben Thomson and dated: August 2017

Knight Frank LLP is a limited liability partnership registered in England with registered number OC305934. Our registered office is 55 Baker Street, London, W1U 8AN, where you may look at a list of members' names.

Designed by

The Sign Design Partnership Ltd

Telephone: +44 (0)20 3286 1633

www.signdesignlimited.com



