

Rede Place

NOTTING HILL - LONDON - W2



C O N T E M P O R A R Y M A S T E R P I E C E



light & lateral living



Rede Place has been completely redeveloped to offer world class luxury and lateral living. Discretely tucked away this contemporary gem offers the very best in modern day standards from wonderful entertaining space, elegant bedroom suites, gym, pool, and parking.

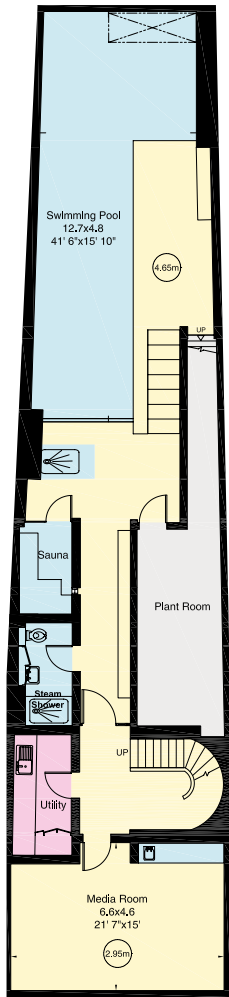




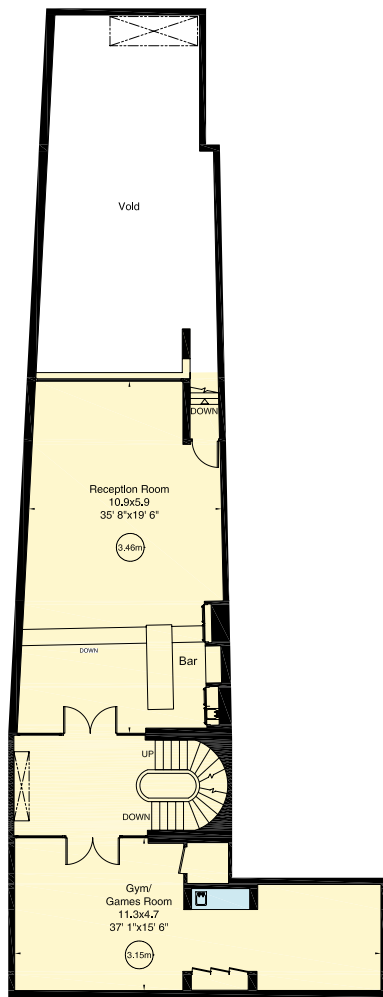
Accommodation

- Master bedroom with en suite bathroom and dressing area
- 3 further bedrooms with en suites
- Open plan reception room/dining room/kitchen
- 2 further reception rooms
- Media room
- Gym/Games room
- Swimming pool
- Sauna
- Shower room
- Utility room
- Guest cloakroom
- Self-contained flat with kitchen and en suite shower room
- Balcony
- Garden
- Garage
- Off-street parking
- Store

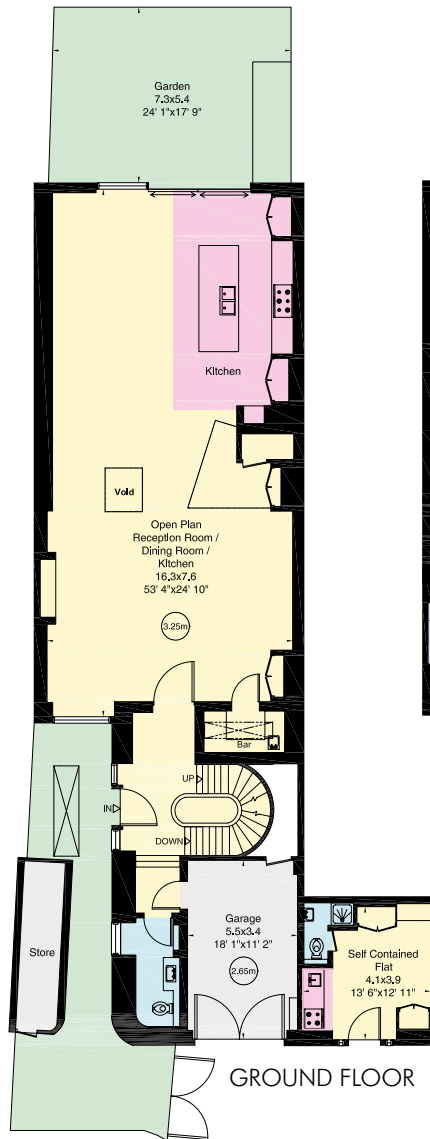




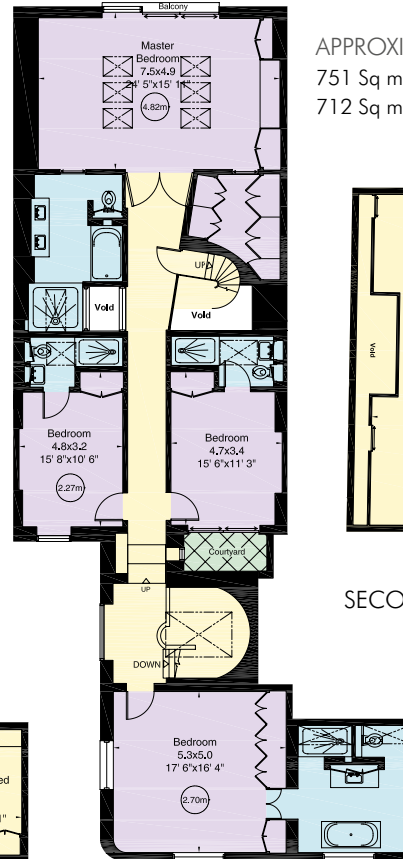
BASEMENT



LOWER GROUND FLOOR



GROUND FLOOR

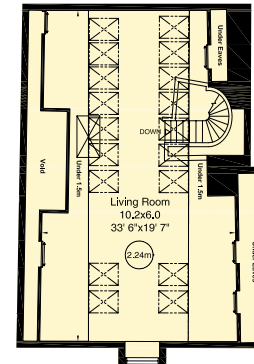


FIRST FLOOR

APPROXIMATE GROSS INTERNAL AREA

751 Sq m (8,082 Sq ft) Including Under Eaves and Under 1.5m

712 Sq m (7,665 Sq ft) Excluding Under Eaves and Under 1.5m



SECOND FLOOR

terms

Freehold
City of Westminster
Price on Application



IMPORTANT NOTICE 1. Particulars: These particulars are not an offer or contract, nor part of one. You should not rely on statements by Knight Frank LLP or Savills in the particulars or by word of mouth or in writing ("information") as being factually accurate about the property, its condition or its value. Knight Frank LLP or Savills have no authority to make any representations about the property, and accordingly any information given is entirely without responsibility on the part of the agents, seller(s) or lessor(s). 2. Photos etc: The photographs show only certain parts of the property as they appeared at the time they were taken. Areas, measurements and distances given are approximate only. 3. Regulations etc: Any reference to alterations to, or use of, any part of the property does not mean that any necessary planning, building regulations or other consent has been obtained. A buyer or lessee must find out by inspection or in other ways that these matters have been properly dealt with and that all information is correct. 4. VAT: The VAT position relating to the property may change without notice. Particulars dated: October 2017.

Knight Frank LLP is a limited liability partnership registered in England with registered number OC305934. Our registered office is 55 Baker Street, London, W1U 8AN, where you may look at a list of members' names.

Brochure by TwentyOneFifty Tel: 020 8778 2150

Notting Hill
020 7229 0229
KnightFrank.co.uk

Savills Notting Hill
nottinghill@savills.com
020 7727 5750
savills.co.uk