

Hidden House



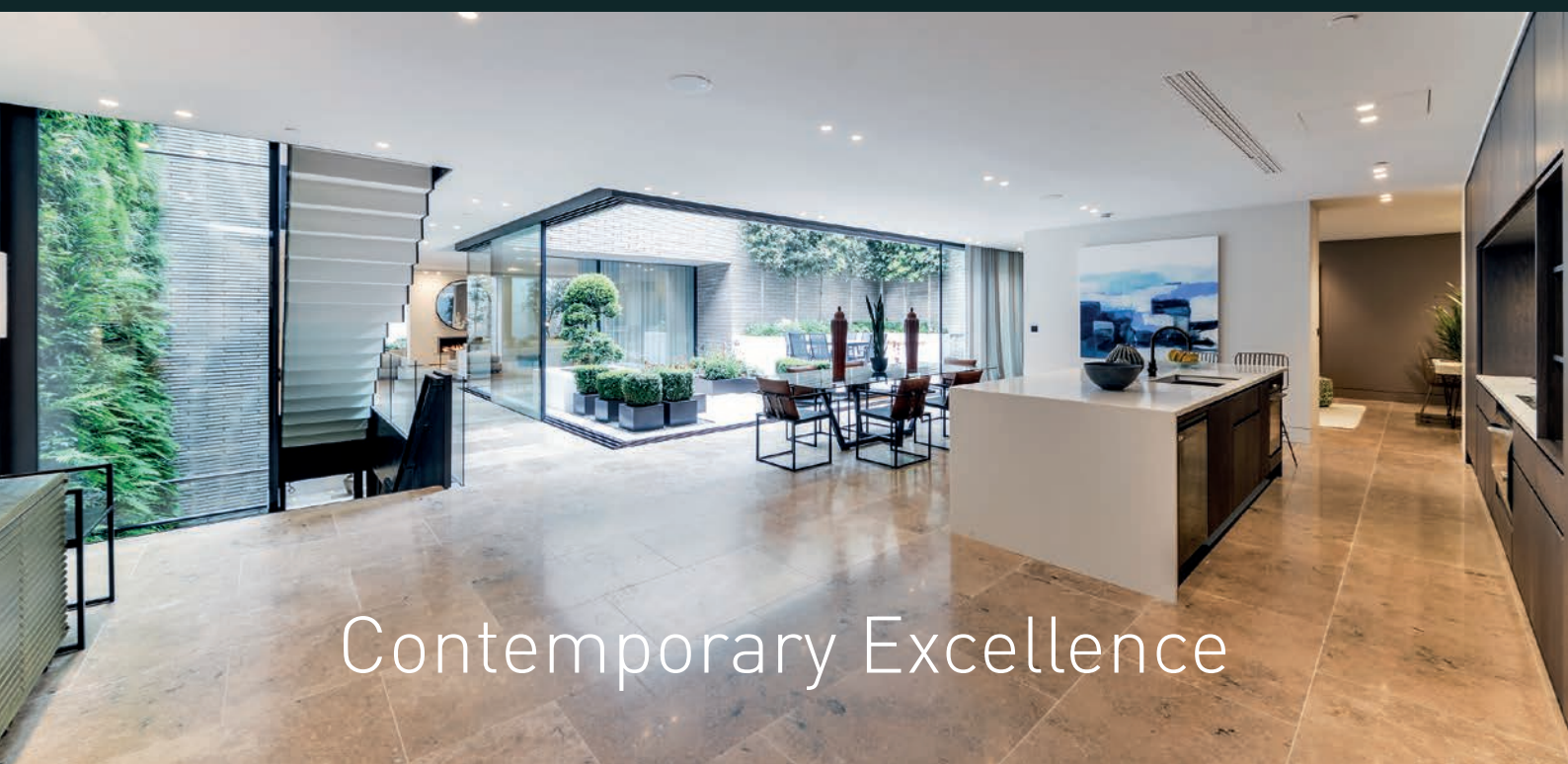
LONSDALE ROAD | NOTTING HILL | LONDON W11



This truly sensational new build house offers the ultimate in modern living. Meticulous attention to detail and flawless design - beyond words.



Hidden Masterpiece



Contemporary Excellence



Lateral Living



This modern masterpiece tucked away behind fashionable Westbourne Grove, in the very heart of cosmopolitan Notting Hill, offers the most complete accommodation with sensational living, luxury bedroom suites and ultimate wellness facilities, including a 20.9 m / 68 ft (approx.) length swimming pool.



Excellence

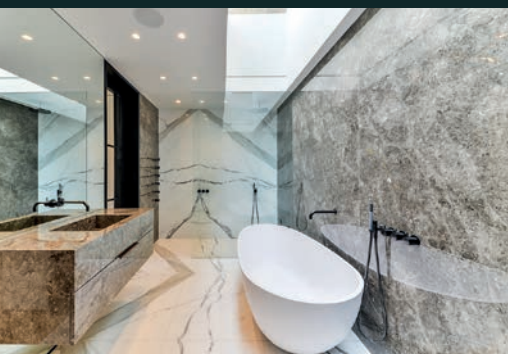


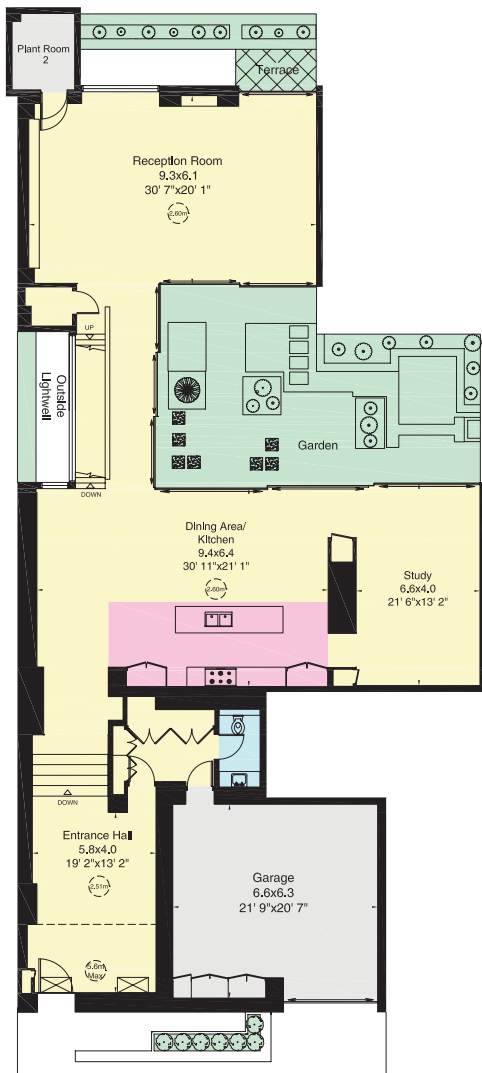
Behind a discreet front door this amazing hidden house offers the following accommodation:

Master bedroom with two en suite bathrooms and dressing area • Four further bedrooms with en suites • Entrance hall
 Reception room • Dining area/kitchen • Media room • Study • Gym • Swimming pool • Wine store • Utility room
 Two guest cloakrooms • Garden • Terrace • Courtyards • Garage

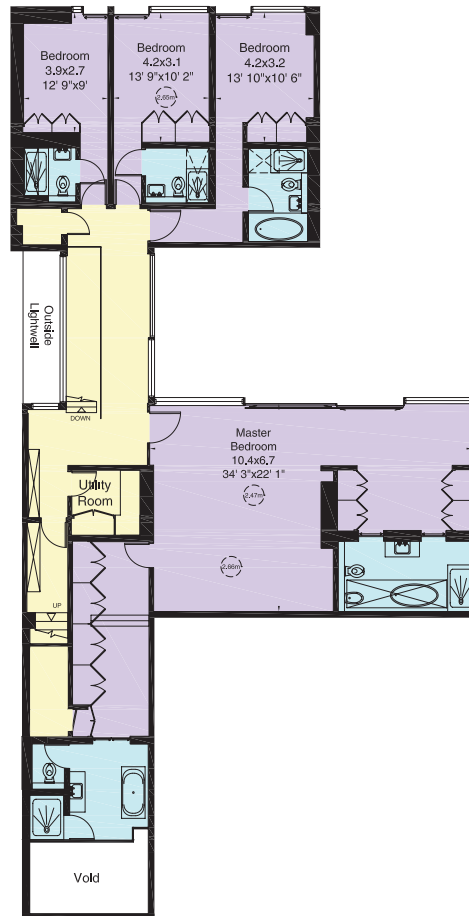


Ultimate Wellness

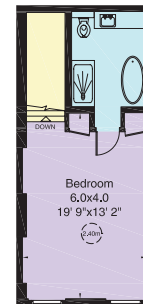




Ground Floor



First Floor



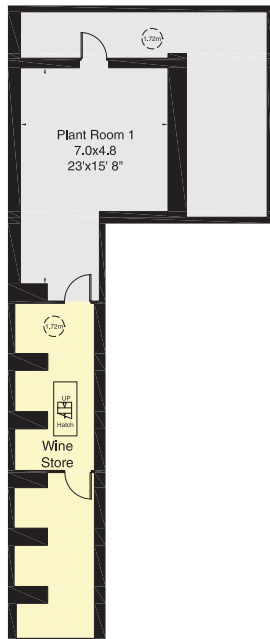
Second Floor



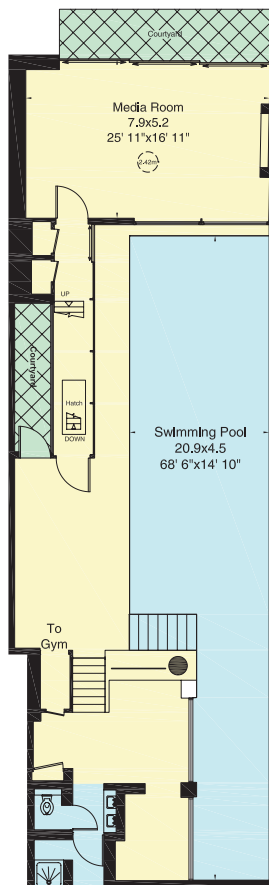
Gross Internal Area

838 sq m (9,022 sq ft) including sub basement and plant room 1 and 2

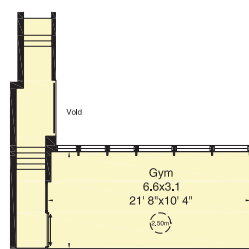
746 sq m (8,025 sq ft) excluding sub basement and plant room 1 and 2



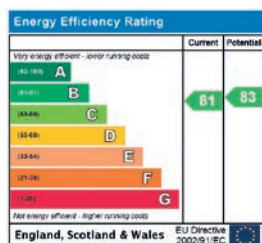
Sub Basement



Basement



Raised Basement



Not to scale, for guidance only and must not be relied upon as a statement of fact. All measurements and areas are approximate only (and have been prepared in accordance with the current edition of the RICS Code of Measuring Practice).

Freehold

The Royal Borough of Kensington & Chelsea

Price Upon Application



Notting Hill

020 7229 0229

KnightFrank.co.uk

Savills Notting Hill

nottinghill@savills.com

020 7727 5750

savills.co.uk



IMPORTANT NOTICE 1. Particulars: These particulars are not an offer or contract, nor part of one. You should not rely on statements by Knight Frank LLP or Savills in the particulars or by word of mouth or in writing ("information") as being factually accurate about the property, its condition or its value. Knight Frank LLP or Savills have no authority to make any representations about the property, and accordingly any information given is entirely without responsibility on the part of the agents, seller(s) or lessor(s). **2.** Photos etc: The photographs show only certain parts of the property as they appeared at the time they were taken. Areas, measurements and distances given are approximate only. **3.** Regulations etc: Any reference to alterations to, or use of, any part of the property does not mean that any necessary planning, building regulations or other consent has been obtained. A buyer or lessee must find out by inspection or in other ways that these matters have been properly dealt with and that all information is correct. **4.** VAT: The VAT position relating to the property may change without notice. Particulars dated: October 2017.

Knight Frank LLP is a limited liability partnership registered in England with registered number OC305934. Our registered office is 55 Baker Street, London, W1U 8AN, where you may look at a list of members' names.

Brochure by TwentyOneFifty Tel: 020 8778 2150