



GROSVENOR SQUARE

MAYFAIR W1K





GROSVENOR SQUARE

MAYFAIR W1K

A magnificent six bedroom apartment offering spectacular views from its ten windows overlooking London's most prestigious garden square.

This gracious property of 4,492 sq ft offers unrivalled lateral space in the heart of the Mayfair village.







Accommodation & Amenities

- Entrance hallway
 - Study
 - Drawing room
 - Dining room
 - Kitchen
- Master bedroom suite
- 3 additional bedroom suites
- 2 further double bedrooms
 - 2 shower rooms
 - Guest WC
- 24 hour concierge
- Lift access



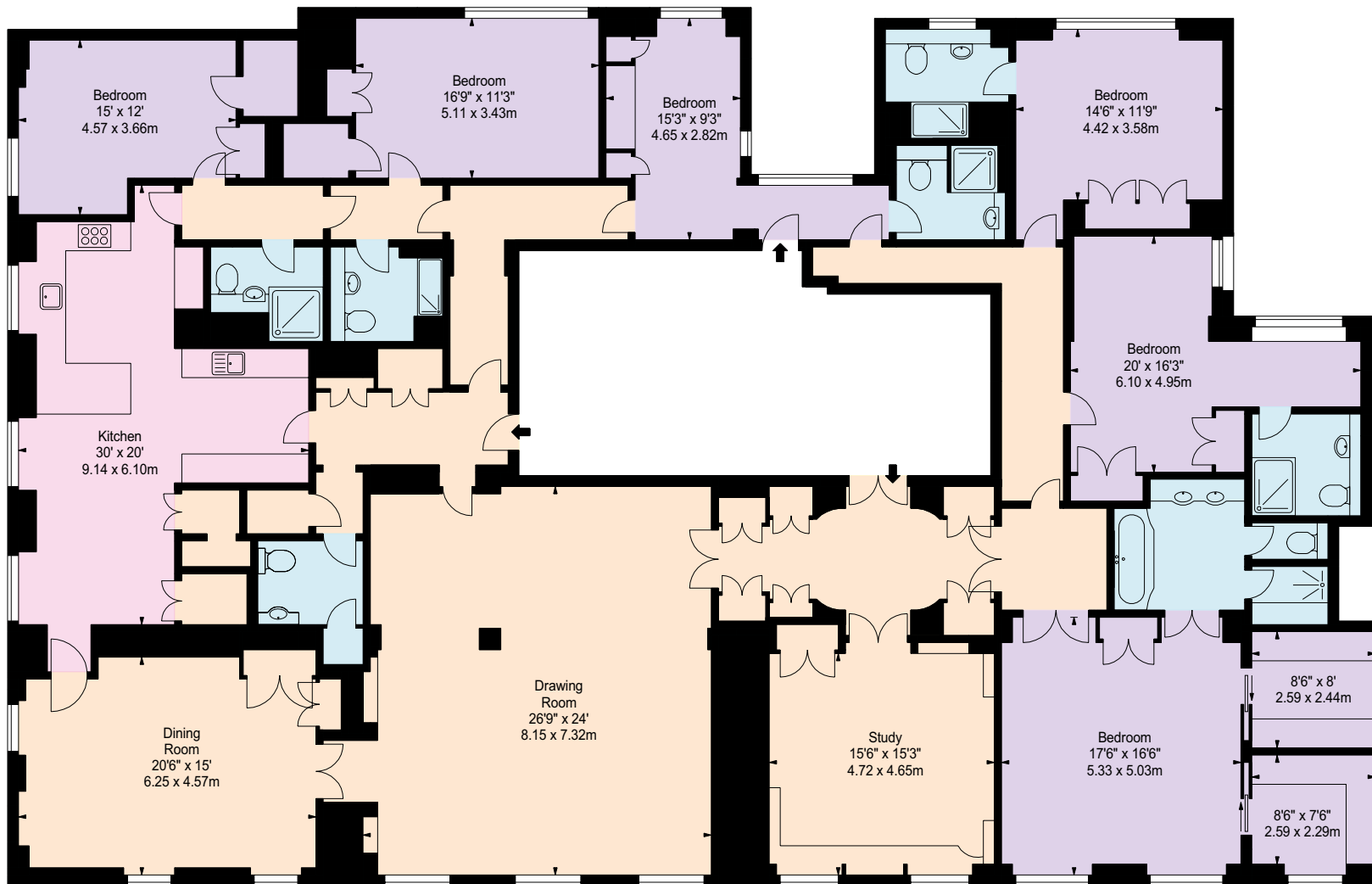




Location

Situated in a highly regarded and sought after portered block in arguably London's most desirable address, the apartment is ideally positioned to benefit from all that Mayfair and the West End has to offer, with easy access to the Royal parks, the world class shopping of nearby Mount Street and Bond Street, and the majority of London's Michelin starred restaurants.





Approximate
Gross Internal Area
417.31 sq m (4,492 sq ft)



FOURTH FLOOR

These plans are for guidance only and must not be relied upon as a statement of fact. Attention is drawn to the Important Notice.



020 7499 1012
120a Mount Street
London W1K 3NN
mayfair@knightfrank.com
KnightFrank.co.uk



Tenure Leasehold Approximately
129 Years Remaining
Local Authority City of Westminster

EPC Rating D
Price On Application

IMPORTANT NOTICE 1. Particulars: These particulars are not an offer or contract, nor part of one. You should not rely on statements by Knight Frank LLP in the particulars or by word of mouth or in writing ("information") as being factually accurate about the property, its condition or its value. Neither Knight Frank LLP nor any joint agent has any authority to make any representations about the property, and accordingly any information given is entirely without responsibility on the part of the agents, seller(s) or lessor(s). 2. Photos etc: The photographs show only certain parts of the property as they appeared at the time they were taken. Areas, measurements and distances given are approximate only. 3. Regulations etc: Any reference to alterations to, or use of, any part of the property does not mean that any necessary planning, building regulations or other consent has been obtained. A buyer or lessee must find out by inspection or in other ways that these matters have been properly dealt with and that all information is correct. 4. VAT: The VAT position relating to the property may change without notice. Particulars dated: March 2016. Photographs dated: March 2016.

Knight Frank LLP is a limited liability partnership registered in England with registered number OC305934. Our registered office is 55 Baker Street, London, W1U 8AN, where you may look at a list of members' names.

Brochure by twentyonefifty Tel: 020 8778 2150