

NORRICE LEA

HAMPSTEAD GARDEN SUBURB • N2



NORRICE LEA

HAMPSTEAD GARDEN SUBURB

• N2

Detached 9 bedroom house on Norrice Lea, N2

Lower Ground Floor

- Entertainment room • Gym • Sauna & Steam room
- WC • Wine Cellar • Kitchenette • Two bedrooms
- Bathroom • Lift access • Garage with car lift • Laundry room

Ground Floor

- Entrance hall • Reception hall • Dining room • Kitchen / Breakfast room • Family room • Drawing room • Garden room
- Study • WC • Lift access

First Floor

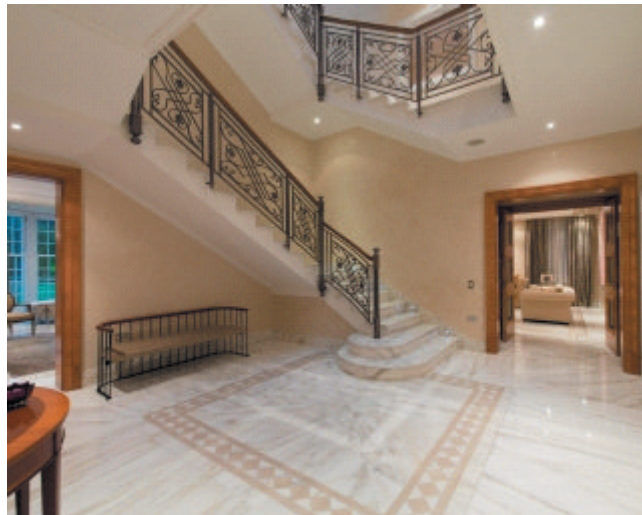
- Master bedroom suite with his and hers bathroom, dressing rooms and a balcony • Two further bedrooms both with en suite bathrooms and dressing rooms • Lift access

Second Floor

- Four bedrooms all with en suite bathrooms • Lift access

Freehold

Approximately 1,170.7 sq m (12,601 sq ft)





Located on one of the most sought after roads in Hampstead Garden Suburb, a beautiful double fronted detached ambassadorial mansion, built by the current owners and presented in an exemplary standard. The residence extends to 12,601 sq ft, set over four floors and occupying a plot of approximately 0.45 acres.

The spectacular entrance hall provides access to all of the principle reception rooms, family rooms, contemporary kitchen, and breakfast room, with the added benefit of French doors leading directly onto a south facing lateral landscaped garden.

To the first floor there is the master suite that benefits from 'his' and 'hers' dressing rooms and en suite bathrooms, with uninterrupted views over the gardens. There are an additional 6 bedrooms each with en suite facilities over the first and second floors.

On the lower ground floor there is an extensive entertaining space, having its own games room, cinema room and wine cellar. The house further benefits from a private spa complete with steam room, sauna and state of the art gym. The heated carriage driveway provides ample off street parking with the addition of a car lift providing integral parking at basement level.











Norrice Lea, London N2



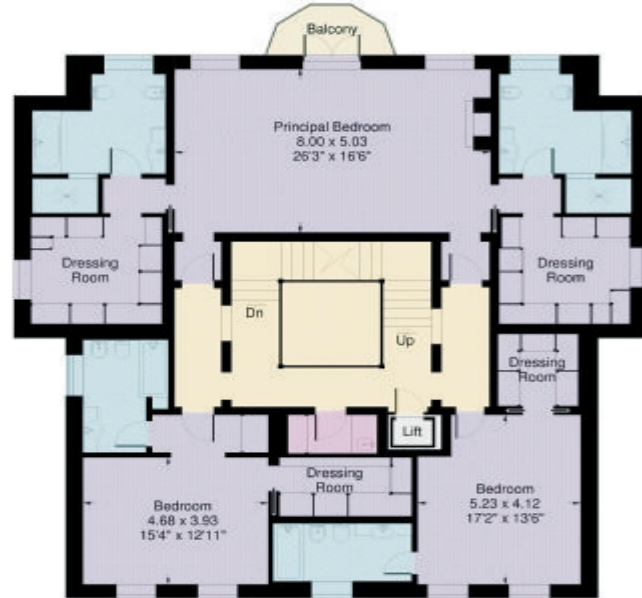
Approximate Gross Internal Area:
1170.7 sq.m. / 12,601 sq.ft.
(including garage, stair voids and reduced height
area below 1.5m - denoted with dashed line)
Garage - 181.0 sq.m. / 1948 sq.ft.
Stair voids - 13.0 sq.m. / 140 sq.ft.
Reduced height area - 10.7 sq.m. / 115 sq.ft.

Floor Plans produced by

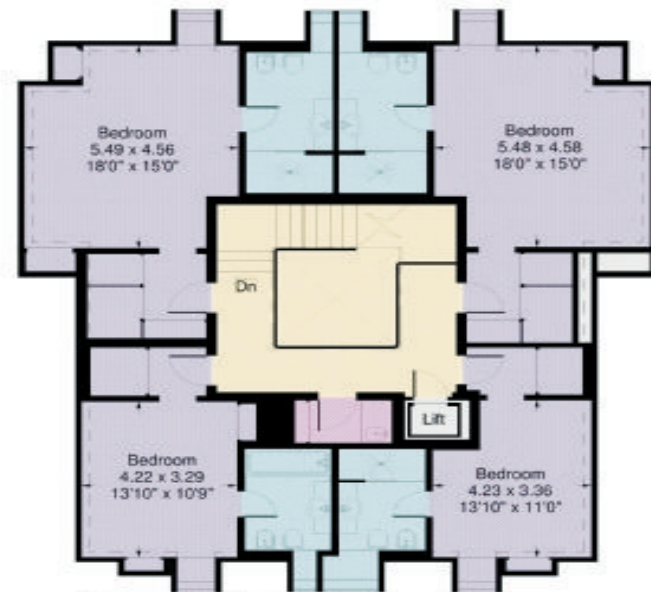
Proplan

01491 842925

This plan is for guidance only and must
not be relied upon as a statement of fact.
Attention is drawn to the Important Notice
on the last page of text of the Particulars.



First Floor



Second Floor



Floor Plans produced by
Proplan
01491 842925
This plan is for guidance only and must
not be relied upon as a statement of fact.
Attention is drawn to the Important Notice
on the last page of text of the Particulars.

**Knight
Frank**
KnightFrank.co.uk

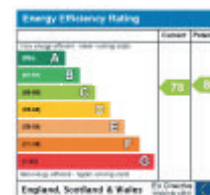
020 7431 8686

79-81 Heath Street

Hampstead NW3 6UG

Hampstead@knightfrank.com

nTheMarket.com



Important Notice 1. Particulars: These particulars are not an offer or contract, nor part of one. You should not rely on statements by Knight Frank LLP in the particulars or by word of mouth or in writing ("information") as being factually accurate about the property, its condition or its value. Neither Knight Frank LLP nor any joint agent has any authority to make any representations about the property, and accordingly any information given is entirely without responsibility on the part of the agents, seller(s) or lessor(s). 2. Photos etc: The photographs show only certain parts of the property as they appeared at the time they were taken. Areas, measurements and distances given are approximate only. 3. Regulations etc: Any reference to alterations to, or use of, any part of the property does not mean that any necessary planning, building regulations or other consent has been obtained. A buyer or lessee must find out by inspection or in other ways that these matters have been properly dealt with and that all information is correct. 4. VAT: The VAT position relating to the property may change without notice. Particulars dated March 2017. Photographs dated March 2017. Knight Frank LLP is a limited liability partnership registered in England with registered number OC305934. Our registered office is 55 Baker Street, London, W1U 8AN, where you may look at a list of members' names.