

# BELGRAVE COURT

WESTFERRY CIRCUS • E14



# BELGRAVE COURT

WESTFERRY CIRCUS • E14

***A magnificent 4 bedroom sub-penthouse apartment located on the corner within Belgrave Court and extending to approximately 241 sq m (2600 sq ft) with a dual aspect terrace offering direct views across the River Thames and City skyline.***

4 bedrooms • 4 bathrooms • 2 reception rooms • Kitchen • Roof Terrace • Concierge • Leisure Facilities • Tennis Court • Private Parking

---

**Guide price:** £2,600,000

**Tenure:** Leasehold

**Local authority:** London Borough of Tower Hamlets



These particulars are intended only as a guide and must not be relied upon as statements of fact. Your attention is drawn to the Important Notice on the last page of the text.



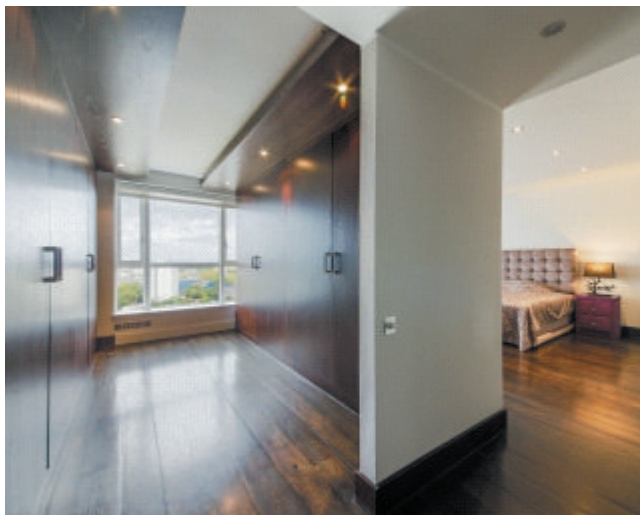
### Description of Property

This exceptional apartment located on the eleventh floor has been refurbished throughout and comprises of an entrance hall with a guest WC, a dual aspect reception room with floor to ceiling windows and access to a sizeable terrace offering incredible far reaching views across the River Thames and towards the iconic City skyline. There is a well appointed kitchen with integrated appliances and ample worktop space. There are 3 bedrooms with built in wardrobes and ensuite bathrooms, whilst the master bedroom suite itself offers a dressing area with ample built in wardrobes and an ensuite bathroom. The property comes with secure underground parking.

### Situation

Belgrave Court is situated within Canary Riverside which is a gated development offering 24 hour security and concierge services and superbly landscaped communal gardens. The development offers easy access to all of Canary Wharf's shops, bars and restaurants. Transport amenities can be found at Canary Wharf Pier offering Thames Clipper services to the City, both Canary Wharf Jubilee Line station (0.5 mile) and Westferry DLR (0.2 miles). Cross rail Place (Elizabeth Line operational in 2018) is also within 0.6 miles.

All times and distances are approximate.



# BELGRAVE COURT

APPROXIMATE GROSS INTERNAL FLOOR AREA: 2601 SQ FT - 241.63 SQ M

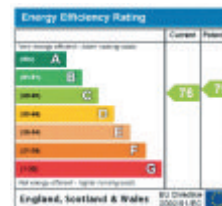


ELEVENTH FLOOR  
FOR ILLUSTRATION PURPOSES ONLY

THIS FLOOR PLAN SHOULD BE USED AS A GENERAL OUTLINE FOR GUIDANCE ONLY AND DOES NOT CONSTITUTE IN WHOLE OR IN PART AN OFFER OR CONTRACT. ANY INTENDING PURCHASER OR LESSEE SHOULD SATISFY THEMSELVES BY INSPECTION, SEARCHES, ENQUIRIES AND FULL SURVEY AS TO THE CORRECTNESS OF EACH STATEMENT. ANY AREAS, MEASUREMENTS OR DISTANCES QUOTED ARE APPROXIMATE AND SHOULD NOT BE USED TO VALUE A PROPERTY OR BE THE BASIS OF ANY SALE OR LET.



**020 7512 9966**  
18/19 Cabot Square  
London E14 4QW  
cwharf@knightfrank.com



**Important Notice 1. Particulars:** These particulars are not an offer or contract, nor part of one. You should not rely on statements by Knight Frank LLP in the particulars or by word of mouth or in writing ("information") as being factually accurate about the property, its condition or its value. Neither Knight Frank LLP nor any joint agent has any authority to make any representations about the property, and accordingly any information given is entirely without responsibility on the part of the agents, seller(s) or lessor(s). **2. Photos etc:** The photographs show only certain parts of the property as they appeared at the time they were taken. Areas, measurements and distances given are approximate only. **3. Regulations etc:** Any reference to alterations to, or use of, any part of the property does not mean that any necessary planning, building regulations or other consent has been obtained. A buyer or lessee must find out by inspection or in other ways that these matters have been properly dealt with and that all information is correct. **4. VAT:** The VAT position relating to the property may change without notice. Particulars dated June 2017 Photographs dated June 2017. Knight Frank LLP is a limited liability partnership registered in England with registered number OC305934. Our registered office is 55 Baker Street, London, W1U 8AN, where you may look at a list of members' names.