



ST. LEONARDS  
HASTINGS • EAST SUSSEX



---

# ST. LEONARDS HASTINGS • KENT

---



Jones Homes (Southern) Ltd, having successfully completed their nearby development 'Churchwood Place' are proud to announce 'Mayfield Heights' - a charming new development of 2 bedroom apartments and three & four bedroom homes in St. Leonards, near Hastings, East Sussex.



Since 1066 when William the Conqueror crossed the English Channel from Normandy to successfully claim the throne of England, promised to him by Edward the Confessor and not to Edward's natural successor Harold Godwinson, the Battle of Hastings has ensured the town's place in the annals of our island's history.



There are of course many other aspects to the history of Hastings and St. Leonards. It still has a thriving fishing fleet which has operated from the Stade Beach and the picturesque net huts of Old Town for over a thousand years. In the 17th century Titus Oates, who lived in the High Street, contrived a Catholic plot against Parliament which led to the execution of over 30 priests.



The celebrated painter John Turner painted the surrounding area, Catherine Cookson, the author, lived in the town for many years where she ran a lodging house and John Logie Baird came to Hastings to convalesce from illness in rooms at Linton Crescent where he created the first television images. The Hastings International Chess Congress draws enthusiasts from all over the world each December.



Today the towns welcome thousands of visitors and holidaymakers to the many local attractions which include the castle, the pier, the White Rock Theatre, miles of beach and a modern shopping centre.



**JONES  
HOMES**



ST. LEONARDS ON SEA

EXISTING DEVELOPMENT



**THE CHELSEA**  
4 bedroom home

**THE YORK**  
4 bedroom home

**THE CHESTER**  
4 bedroom home

**THE LANGLEY**  
3 bedroom home

**THE APARTMENTS**  
2 bedroom home

Plots 5, 6, 25 & 26

Plots 74, 75

Plots 3, 4, 15-17, 20-24,  
29, 30, 54-61, 70-73

Plots 1, 2, 7-14, 18, 19, 27  
28, 31-36, 50-53

Plots 37-42, 43-49, 62-69



These details are prepared for the guidance of prospective purchasers and do not form part of any contract. Furthermore the builders reserve the right to vary details from time to time as may be necessary.



ST LEONARDS • HASTINGS • EAST SUSSEX  
THE CHESTER

*4 bedroom home*

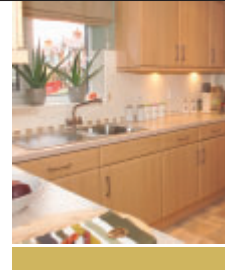


Note: These details are prepared for the guidance of prospective purchasers and do not form part of any contract. Elevational treatments may differ. Please check with your Sales Advisor. Furthermore, Jones Homes reserve the right to vary details as may be necessary.

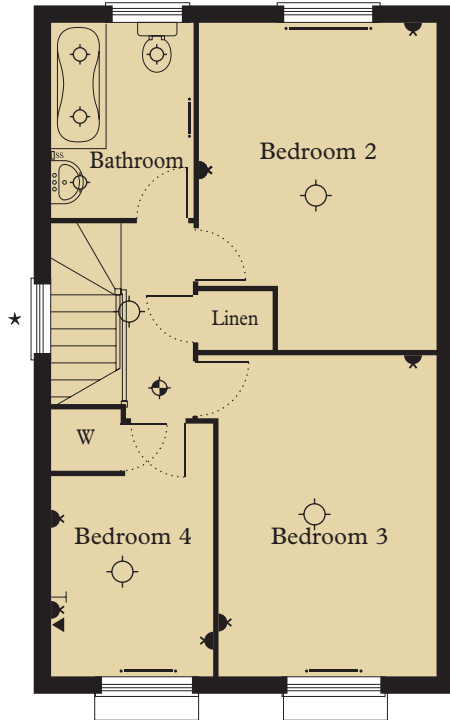
**JONES  
HOMES**

# THE CHESTER

4 bedroom home



## SECOND FLOOR



## SECOND FLOOR

### BEDROOM 2

14'4" x 10'2"  
4.38m x 3.11m

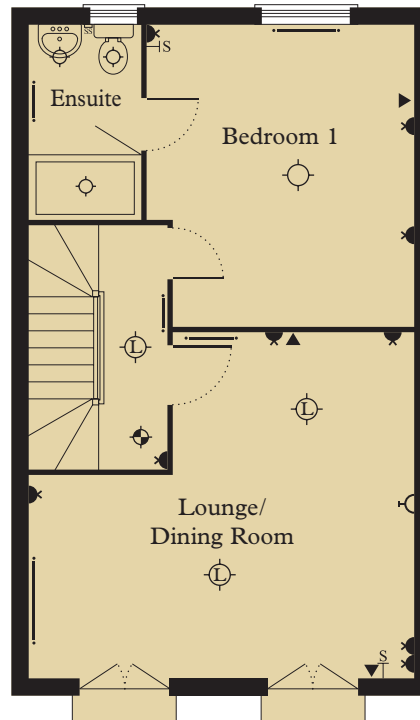
### BEDROOM 3

13'10" x 9'3"  
4.23m x 2.82m

### BEDROOM 4

10'9" x 7'1"  
3.30m x 2.16m

## FIRST FLOOR



## FIRST FLOOR

### LOUNGE/DINING ROOM

16'8" x 14'11" max  
5.09m x 4.56m max

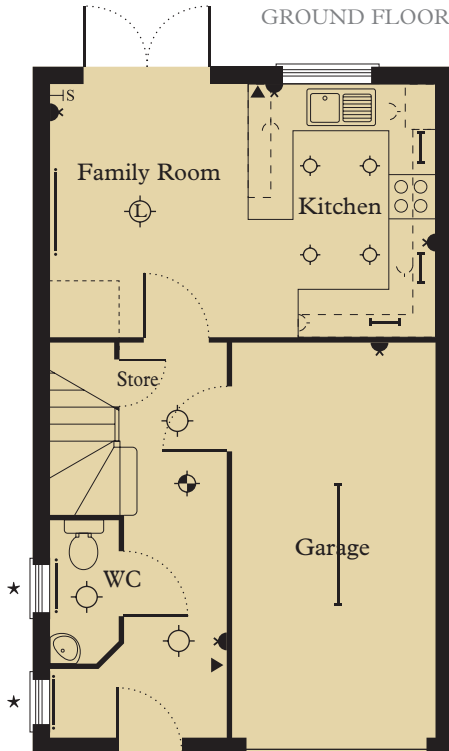
### BEDROOM 1

13'3" x 11'6"  
4.05m x 3.50m

### ENSUITE

8'6" x 4'10"  
2.60m x 1.48m

## GROUND FLOOR



## GROUND FLOOR

### KITCHEN/FAMILY ROOM

16'8" x 11'0"  
5.09m x 3.35m

\*Side windows to selected plots only.  
Second floor has restricted headroom.  
Room sizes shown are maximum.  
Some plots may be handed to the floorplan shown.  
Please check with your Sales Advisor.

## KEY



Note: These details are prepared for the guidance of prospective purchasers and do not form part of any contract. Furthermore, Jones Homes reserve the right to vary details as may be necessary. Please check with your Sales Advisor.

# JONES HOMES



ST LEONARDS • HASTINGS • EAST SUSSEX  
THE CHELSEA

*4 bedroom home*

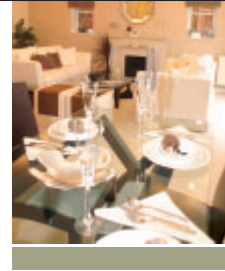


Note: These details are prepared for the guidance of prospective purchasers and do not form part of any contract. Elevation treatments may differ. Please check with your Sales Advisor. Furthermore, Jones Homes reserve the right to vary details as may be necessary.

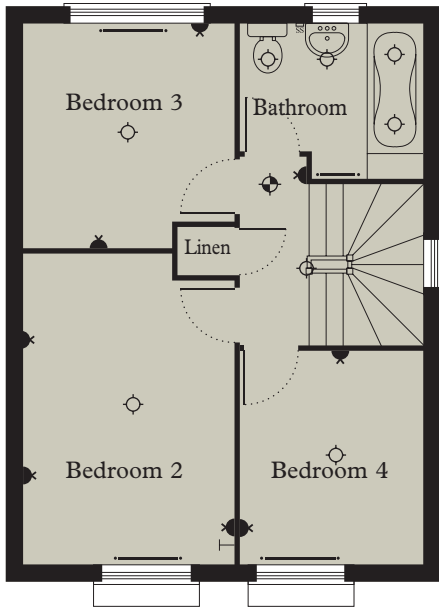
**JONES**  
HOMES

# THE CHELSEA

4 bedroom home



SECOND FLOOR



SECOND FLOOR

**BEDROOM 2**

13'5" x 9'0"  
4.11m x 2.75m

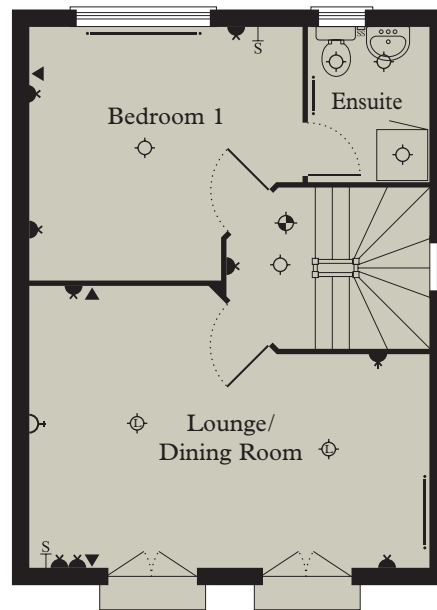
**BEDROOM 3**

9'6" x 9'0"  
2.98m x 2.75m

**BEDROOM 4**

9'1" x 7'10"  
2.78m x 2.40m

FIRST FLOOR



FIRST FLOOR

**LOUNGE/DINING ROOM**

17'2" x 12'0" max  
5.25m x 3.66m max

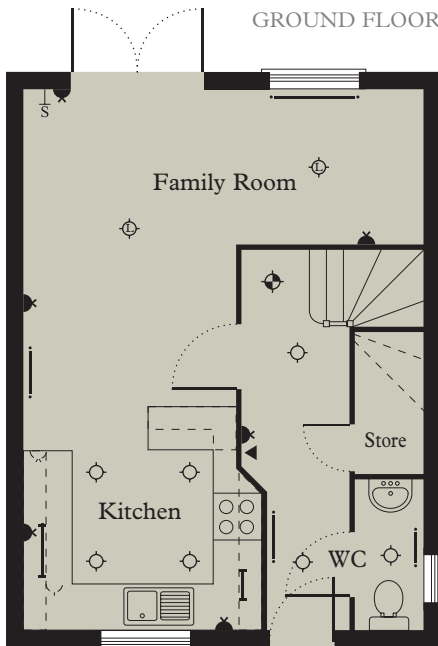
**BEDROOM 1**

11'1" x 11'2"  
3.61m x 3.41m

**ENSUITE**

6'9" x 5'0"  
2.07m x 1.54m

GROUND FLOOR



GROUND FLOOR

**KITCHEN**

10'1" x 9'10"  
3.08m x 3.00m

**FAMILY ROOM**

17'2" x 13'9"  
5.25m x 4.20m

Room sizes shown are maximum.

Some plots may be handed to the floorplan shown.

Please check with your Sales Advisor.

**KEY**



Note: These details are prepared for the guidance of prospective purchasers and do not form part of any contract. Furthermore, Jones Homes reserve the right to vary details as may be necessary. Please check with your Sales Advisor.





ST LEONARDS • HASTINGS • EAST SUSSEX  
**THE LANGLEY**

*3 bedroom home*



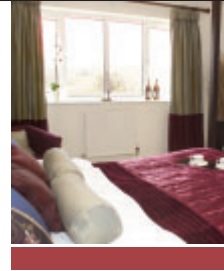
Note: These details are prepared for the guidance of prospective purchasers and do not form part of any contract. Elevational treatments may differ. Please check with your Sales Advisor. Furthermore, Jones Homes reserve the right to vary details as may be necessary.

**JONES  
HOMES**

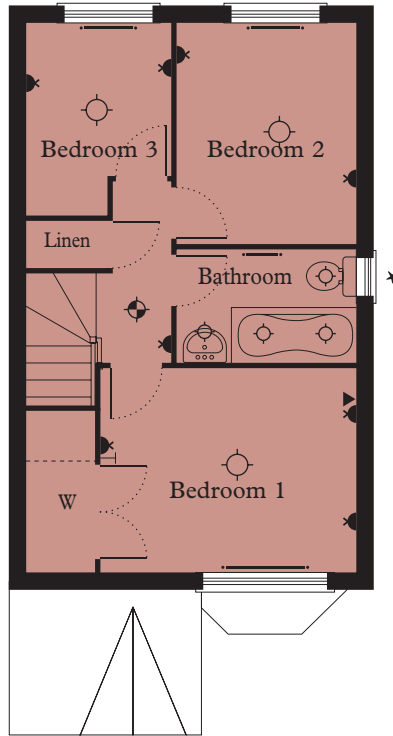


# THE LANGLEY

3 bedroom home



FIRST FLOOR



FIRST FLOOR

**BEDROOM 1**

11'4" x 9'0" max  
3.46m x 2.73m max

**BEDROOM 2**

9'8" x 7'11"  
2.94m x 2.41m

**BEDROOM 3**

8'5" max x 6'5"  
2.58m max x 1.97m

GROUND FLOOR

**KITCHEN**

10'5" x 6'3"  
3.18m x 1.92m

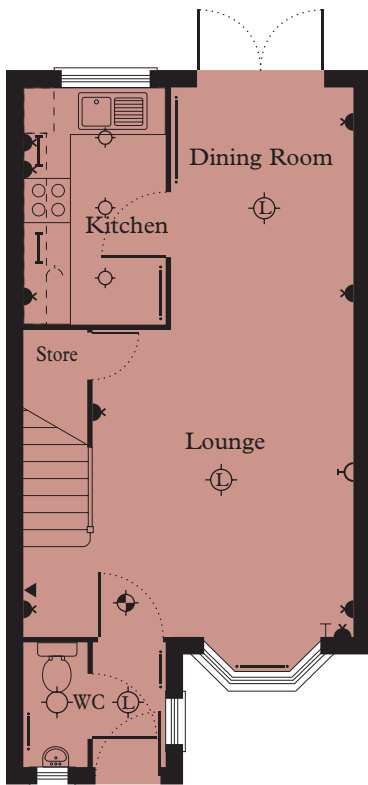
**LOUNGE**

14'4" x 13'5" exc bay  
4.38m x 4.11m exc bay

**DINING ROOM**

10'8" x 8'1"  
3.25m x 2.46m

GROUND FLOOR



\*Side windows to selected plots only.

Room sizes shown are maximum.

Some plots may be handed to the floorplan shown.

Please check with your Sales Advisor.

**KEY**



Note: These details are prepared for the guidance of prospective purchasers and do not form part of any contract. Furthermore, Jones Homes reserve the right to vary details as may be necessary. Please check with your Sales Advisor.



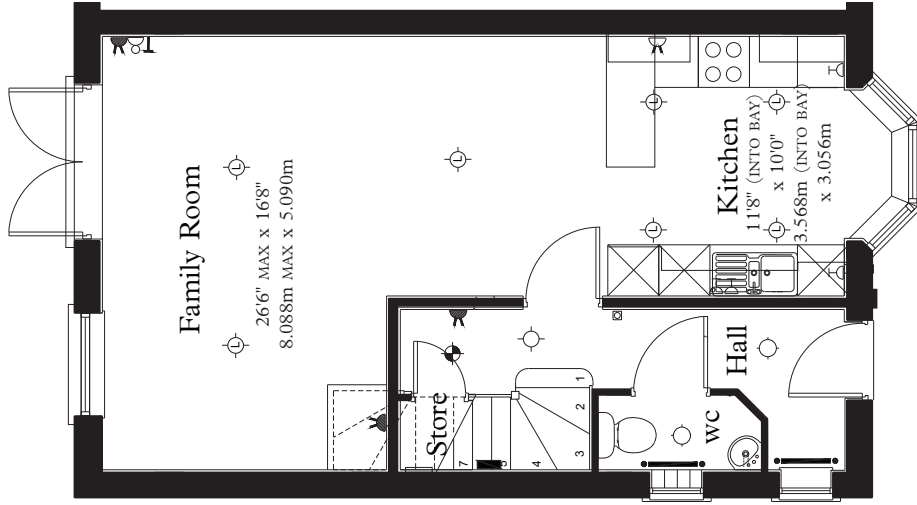


ST. LEONARDS ON SEA

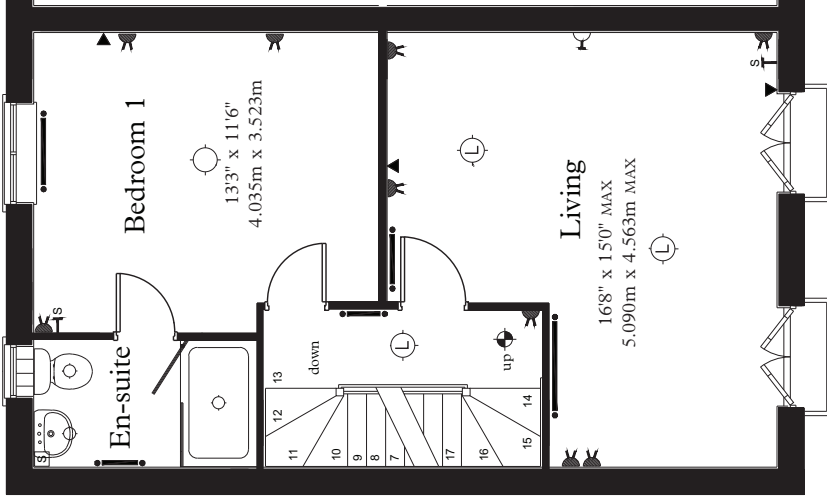
THE YORK  
4 BEDROOM TOWNHOUSE



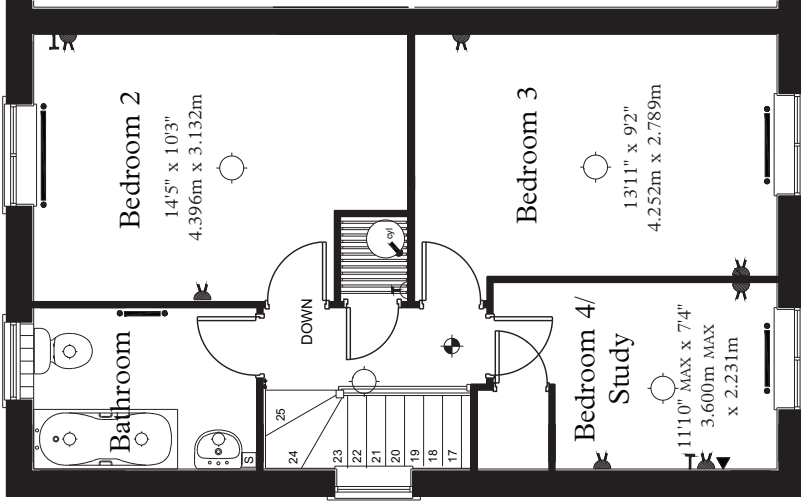
# THE YORK 4 BEDROOM TOWNHOUSE



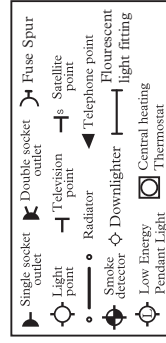
Ground Floor



First Floor



Second Floor



# MAYFIELD HEIGHTS

SPECIFICATION	The York	The Chester	The Chelsea	The Langley	Apartments
Lockable double glazed PVCu windows	●	●	●	●	●
French windows front and rear	●	●	●	●	●
Smooth plastered ceilings	●	●	●	●	●
Flush Ash internal doors	●	●	●	●	●
Brushed Stainless steel internal door furniture	●	●	●	●	●
Multi Point locking external doors	●	●	●	●	●
Gas fired central heating	●	●	●	●	●
Satellite TV point to lounge	●	●	●	●	●
*Choice of wall colour	●	●	●	●	●
Pre wired for alarm system	●	●	●	●	
<b>KITCHEN</b>					
*Choice of fitted kitchens and co ordinating worktops	●	●	●	●	●
*Choice of porcelanosa wall tiles	●	●	●	●	●
Built in Stainless steel electric oven	●	●	●	●	●
Built in Stainless steel gas hob	●	●	●	●	●
Built in Stainless steel chimney extractor	●	●	●	●	●
Space with plumbing for dishwasher	●	●	●	●	
Space with plumbing for washing machine	●	●	●	●	
Low voltage downlighters	●	●	●	●	●
Under unit lighting	●	●	●	●	●
Ceramic floor tiles	●	●	●	●	
<b>BATHROOM &amp; EN-SUITE</b>					
Low voltage downlighters	●	●	●	●	●
White sanitaryware - Twyfords Refresh				●	●
White sanitaryware - Twyfords Refresh Square	●	●	●		
*Choice of porcelanosa wall tiles	●	●	●	●	●
White heated towel warmers (depending on window position)	●	●	●		
Shower over bath with shower screen				●	●
<b>BEDROOM</b>					
TV point to bedroom 1	●	●	●	●	●
Telephone point to bedroom 1	●	●	●	●	●
<b>EXTERNAL</b>					
Paved patio area	●	●	●	●	
Gardens turfed to front and rear	●	●	●	●	
<b>GENERAL</b>					
NHBC Buildmark cover	●	●	●	●	●

\*choices available subject to build stage at point of reservation.

*These details are prepared for the guidance of prospective purchasers and do not form part of any contract. Furthermore the builders reserve the right to vary details from time to time as may be necessary.*

---

# MAYFIELD HEIGHTS

---



ST. LEONARDS • HASTINGS • EAST SUSSEX



Jones Homes Limited, 3 White Oak Square, Swanley, Kent BR8 7AG  
Telephone: 01322 665000