

THREE BEDROOMS

THREE BATHROOMS

NINTH FLOOR

TWO LARGE BALCONIES

24 HOUR CONCIERGE

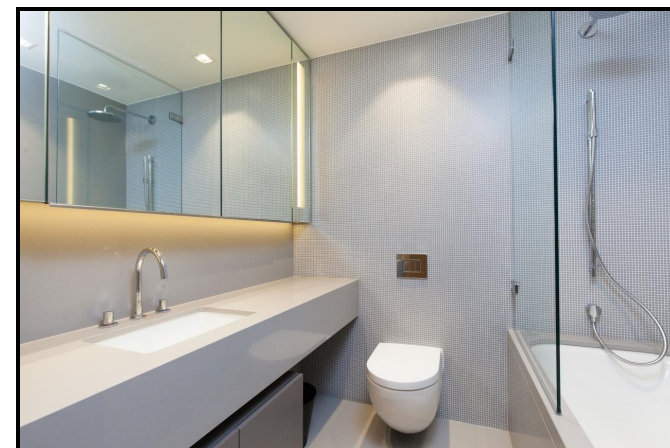
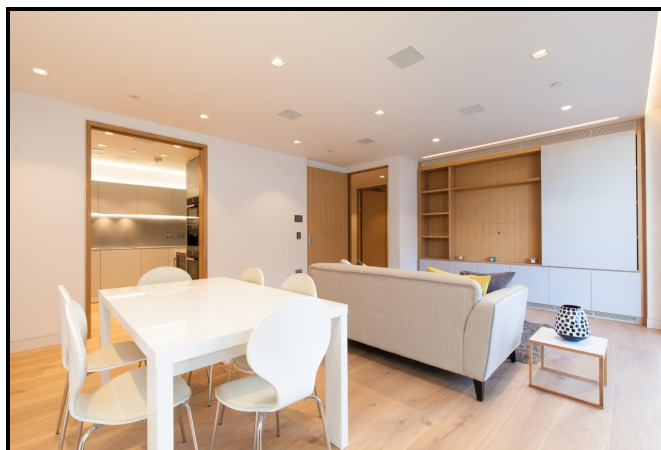
An outstanding three double bedroom, three bathroom apartment on the ninth floor of the modern Tudor House development located near to London Bridge. This apartment comes complete with an inviting living space, designer kitchen with Miele appliances, two en suites, two balconies, oak flooring and floor to ceiling windows. The development is located near to London Bridge station.

**£2,999,995 (Leasehold)**



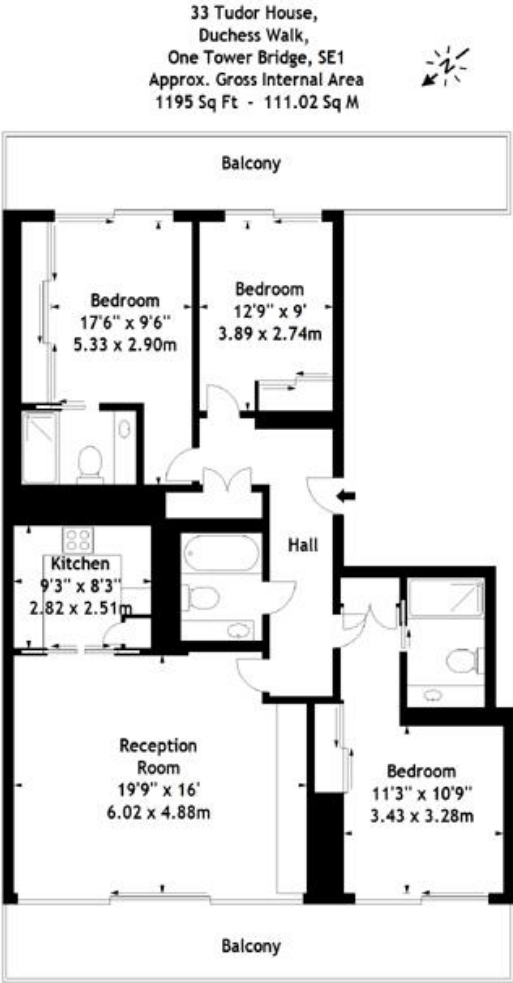
# ONE TOWER BRIDGE, TUDOR HOUSE, TOWER BRIDGE SE1

£2,999,995 (Leasehold)



# ONE TOWER BRIDGE, TUDOR HOUSE, TOWER BRIDGE SE1

£2,999,995 (Leasehold)

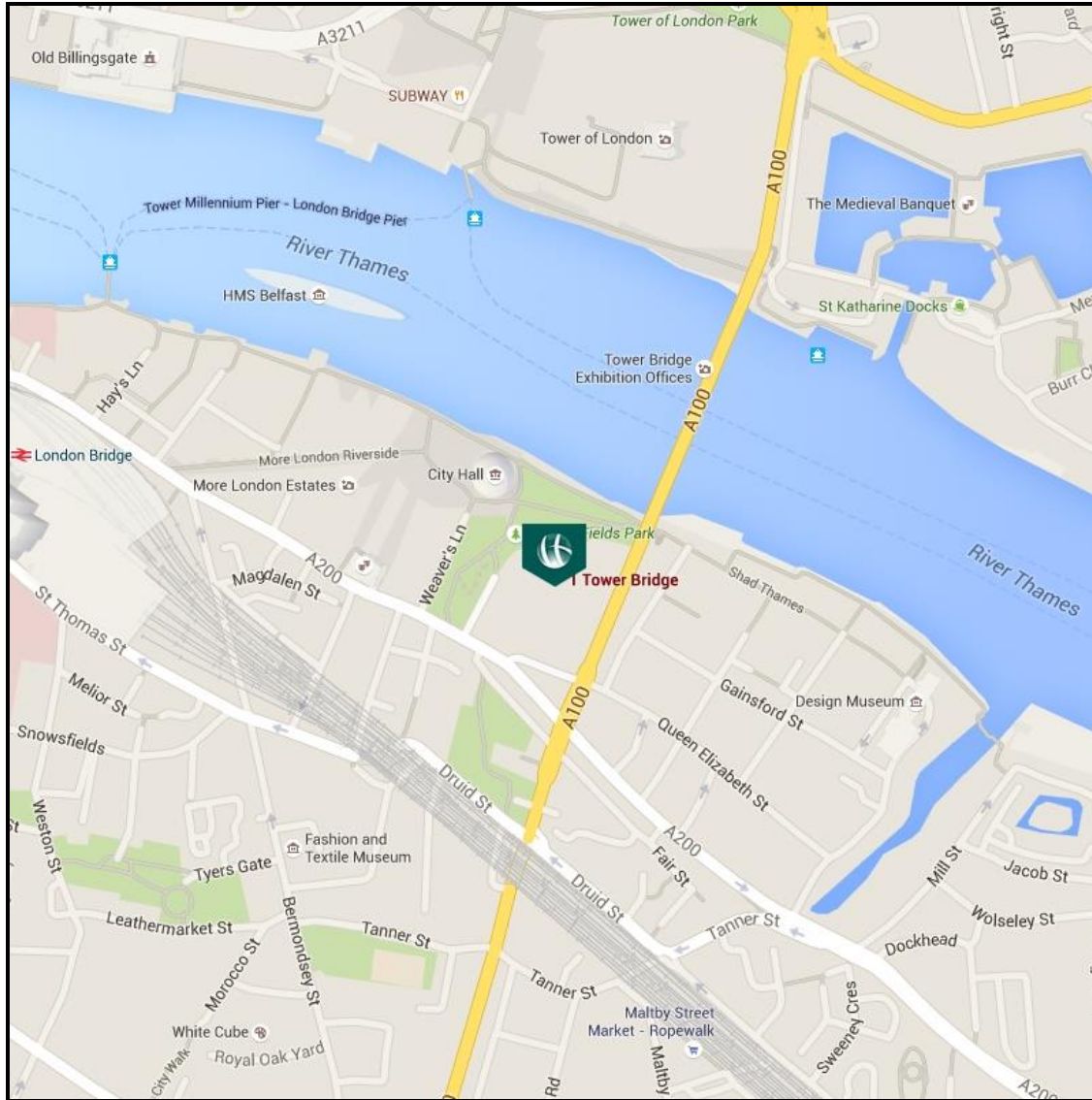


Ninth Floor

Measured in accordance with RICS guidelines. Every attempt is made to ensure accuracy, however all measurements are approximate. This floor plan is for illustrative purposes only and is not to scale.  
© Datography Ltd 2016  
Photographs \* Floorplans \* Virtual Tours  
Tel: 0845 643 4401 www.datography.com

# ONE TOWER BRIDGE, TUDOR HOUSE, TOWER BRIDGE SE1

**£2,999,995 (Leasehold)**



Energy Efficiency Rating		Environmental Impact Rating	
	Current	Potential	
Very energy efficient - lower running costs			Very environmentally friendly - lower CO <sub>2</sub> emissions
(92-100) <b>A</b>			(82-100) <b>A</b>
(81-91) <b>B</b>	<b>85</b>	<b>85</b>	(81-91) <b>B</b>
(69-80) <b>C</b>			(69-80) <b>C</b>
(55-68) <b>D</b>			(55-68) <b>D</b>
(39-54) <b>E</b>			(39-54) <b>E</b>
(21-38) <b>F</b>			(21-38) <b>F</b>
(1-20) <b>G</b>			(1-20) <b>G</b>
Not energy efficient - higher running costs			Not environmentally friendly - higher CO <sub>2</sub> emissions
<b>England &amp; Wales</b>	EU Directive 2002/91/EC		<b>England &amp; Wales</b>
<p>The energy efficiency rating is a measure of the overall efficiency of a home. The higher the rating the more energy efficient the home is and the lower the fuel bills will be.</p> <p>The environmental impact rating is a measure of a home's impact on the environment in terms of carbon dioxide (CO<sub>2</sub>) emissions. The higher the rating the less impact it has on the environment.</p>			

[View Property](#)

**Contact Information:**

**Elephant and Castle Office**

5 St Gabriel Walk, London, SE1 6FS

Tel: 020 3869 2888

Email: [onetheelephant@chaseevans.co.uk](mailto:onetheelephant@chaseevans.co.uk)