

OFF PLAN

TWO BEDROOMS

TWO BATHROOMS

23RD FLOOR

SKY GARDEN

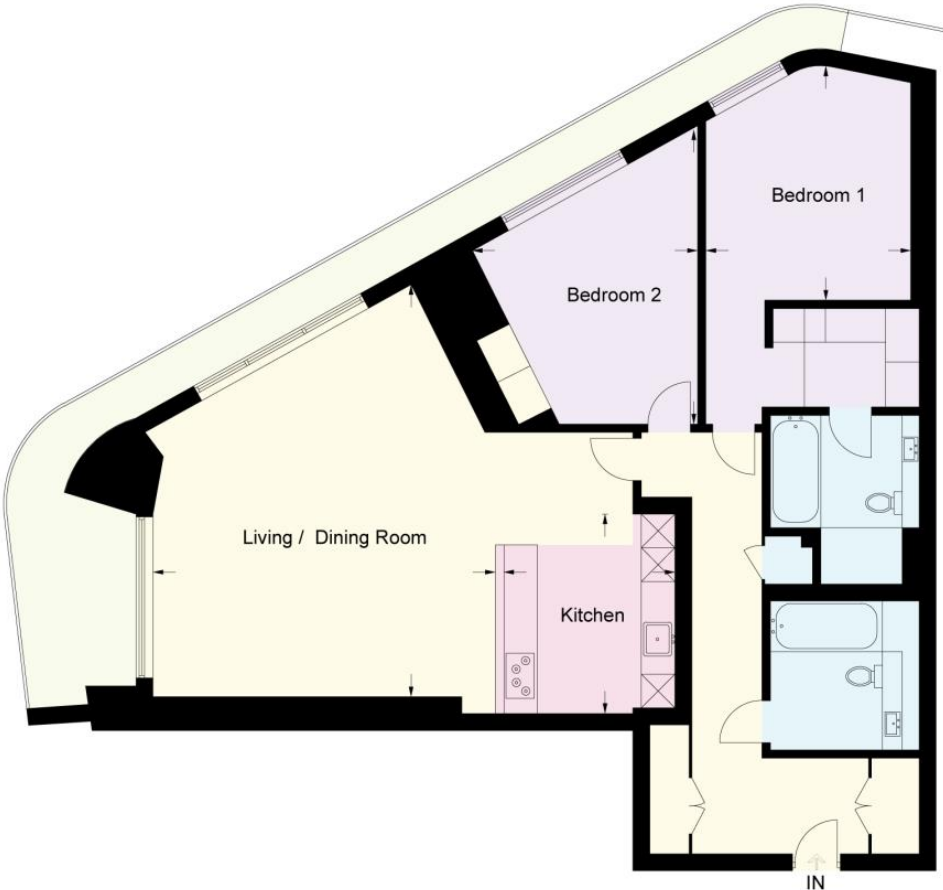
A spacious 'off-plan' two bedroom apartment housed on the 23rd floor of the striking One Blackfriars development located close to Blackfriars Bridge. The apartment arrives with approximately 1407 square feet of living space and a wraparound balcony facing South and West. Residents will benefit from being a short distance away from Southwark Underground station, providing a valuable transport link.

£2,350,000 (Leasehold)



One Blackfriars, SE1

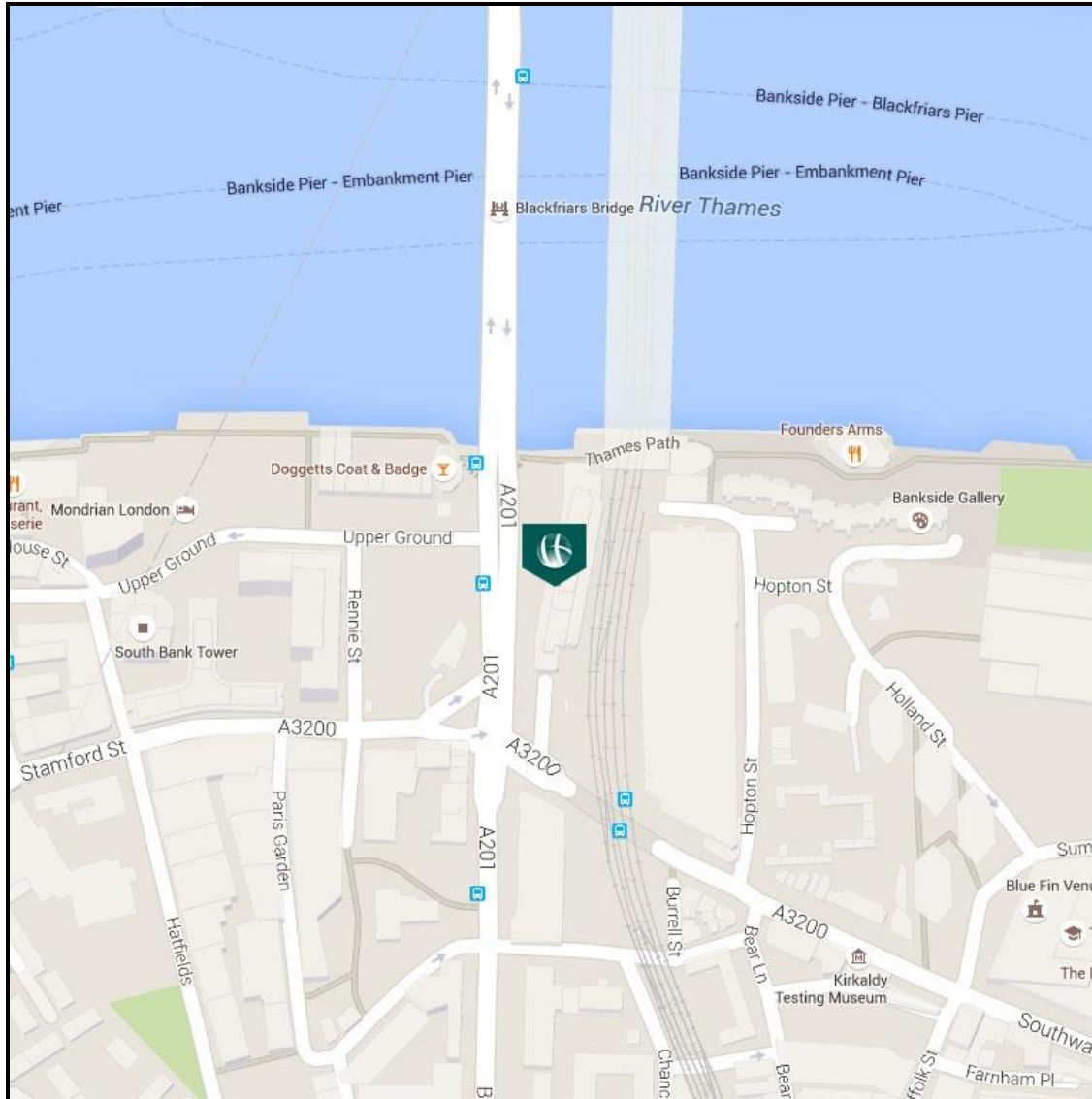
Approximate Gross Internal Area = 130.7 sq m / 1407 sq ft



Chase Evans make every attempt to ensure accuracy, however all measurements are approximate. All aspects of this floor plan are for illustrative purposes only and not to scale. Errors and omissions excepted (E&OE).

ONE BLACKFRIARS, SOUTHBANK, LONDON SE1

£2,350,000 (Leasehold)



View Property

Contact Information:

Elephant and Castle Office

5 St Gabriel Walk, London, SE1 6FS

Tel: 020 3869 2888

Email: onetheelephant@chaseevans.co.uk