



Copthorne Road, Croxley Green, WD3 4AE **£1,100,000 Freehold**

Potential, Potential, Potential!!!

- Detached family home
- Close to good schools
- Ample parking

To view this property contact: Rickmansworth Sales
 Croxley Green t: 01923 777704 e:
 croxley@sewelligardner.com

www.sewelligardner.com



Nearest Train Station: A four bedroom detached house located on one of Croxley Green's most sought after



Nearest Underground Station:



Distance to Town Centre: 0.6 miles to Rickmansworth

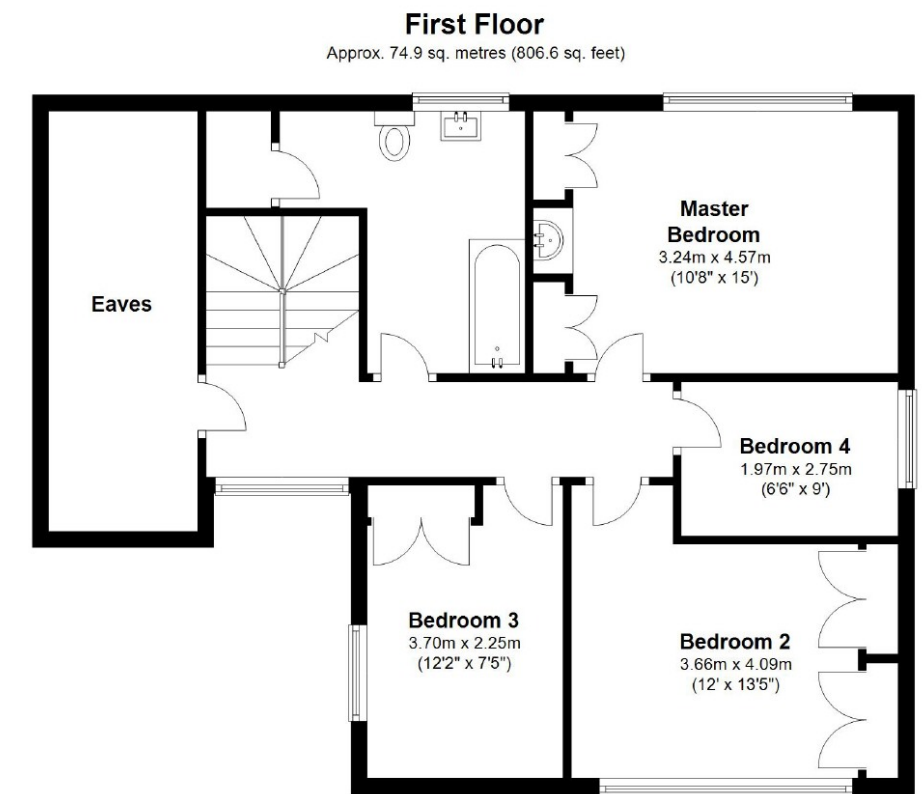
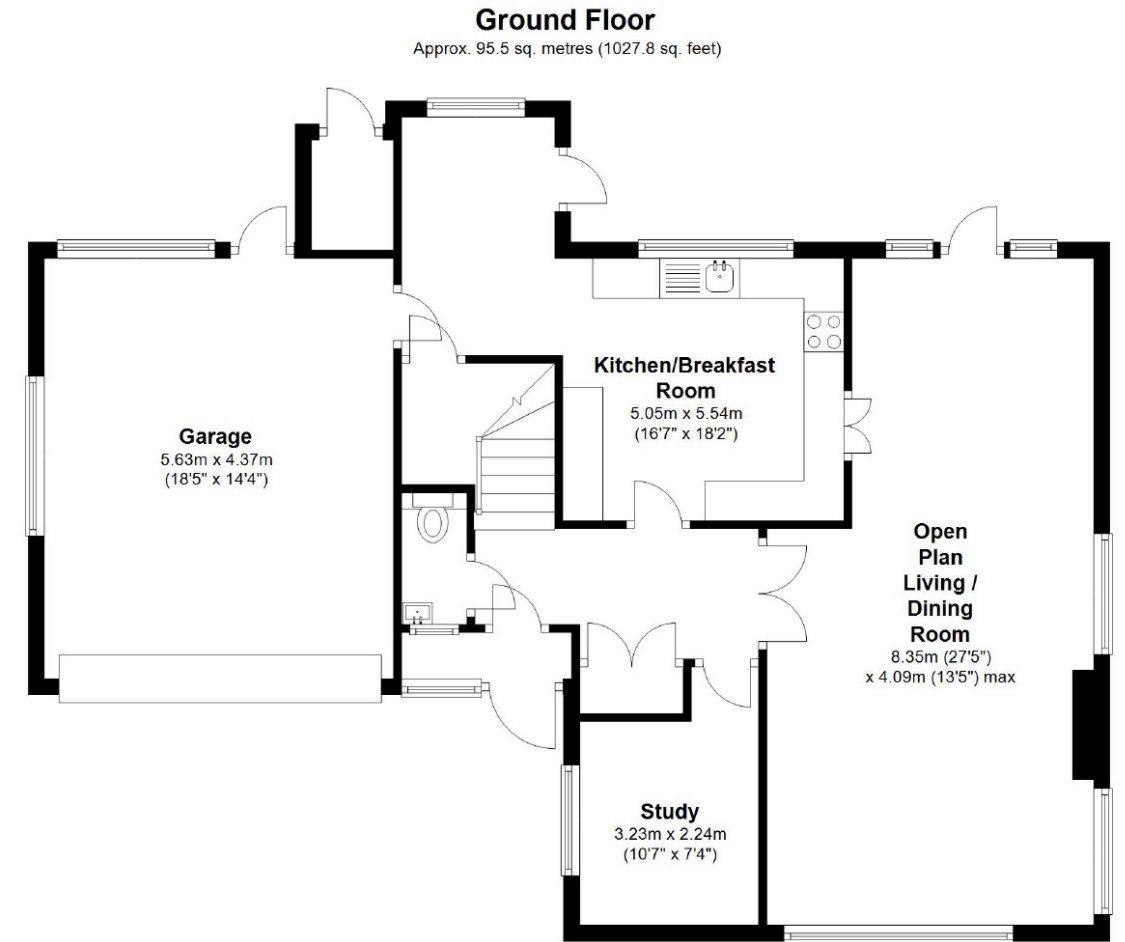


M25:
0.8 miles to Rickmansworth

Local Authority:
Three Rivers District Council

Council Tax:
Band G

Approx Floor Area:
1834 sqft



Total area: approx. 170.4 sq. metres (1834.4 sq. feet)