

Kibworth Meadows

Kibworth, Leicester, LE8 0RX

A beautiful new community of luxury family homes



www.dwh.co.uk

Where quality lives



David Wilson Homes

Kibworth Meadows

Kibworth, Leicester, LE8 0RX

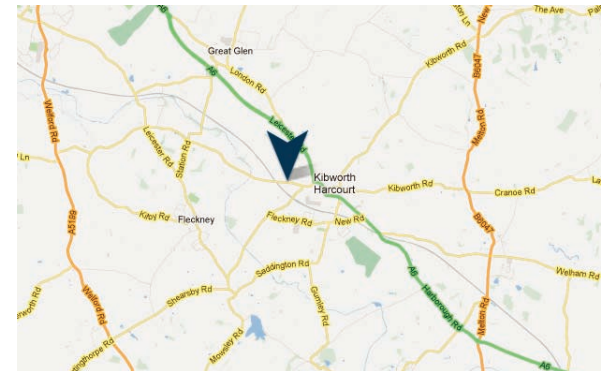
A beautiful new community of luxury family homes

If you're looking for a friendly community within a picture book corner of Leicestershire, then Kibworth Meadows is the perfect place.

Close to Kibworth village, there's everything you need here from a florist to a book shop and an award-winning Italian restaurant.

When it comes to village life, it doesn't get much better than postcard-perfect Kibworth. Eight miles to the south east of Leicester, this desirable destination has everything you could ever need, right on your doorstep.

From open countryside through to a great range of facilities that includes some of the best schools in the county, not to mention a fantastic transport network, you'll instantly want to make it home.



www.dwh.co.uk

Where quality lives



David Wilson Homes

Kibworth Meadows

Site Plan



- The Calder (P130) 1 bedroom apartment
- The Belstead (P232) 2 bedroom apartment
- The Easthorpe (P233) 2 bedroom apartment
- The Kennett (T310) 3 bedroom home
- The Ribble (P330) 3 bedroom home
- The Kersey (P331) 3 bedroom home
- The Hadley (P341) 3 bedroom home
- The Strathmore (P383) 3 bedroom home
- The Eaton (R400) 4 bedroom home
- The Irving (H404) 4 bedroom home
- The Bradbury (H414) 4 bedroom home
- The Winstone (H421) 4 bedroom home
- The Cornell (H433) 4 bedroom home
- The Hurst (H451) 4 bedroom home
- The Ashtree (H455) 4 bedroom home
- The Holden (H469) 4 bedroom home
- The Eden (H485) 4 bedroom home
- The Chelworth (H497) 4 bedroom home
- The Shenton (H431) 4 bedroom home
- The Emerson (H500) 5 bedroom home
- The Lichfield (H533) 5 bedroom home
- Affordable Housing Tenure to be agreed
- Shared Ownership Affordable Housing
- Rented Affordable Housing
- SH Showhomes
- SC Sales Centre

The company reserves the right to make amendments to the development layout and materials at any time. This leaflet is for guidance only and is not intended to form any part of any contract. For landscaping information please refer to detailed drawings.01/14



The Strathmore

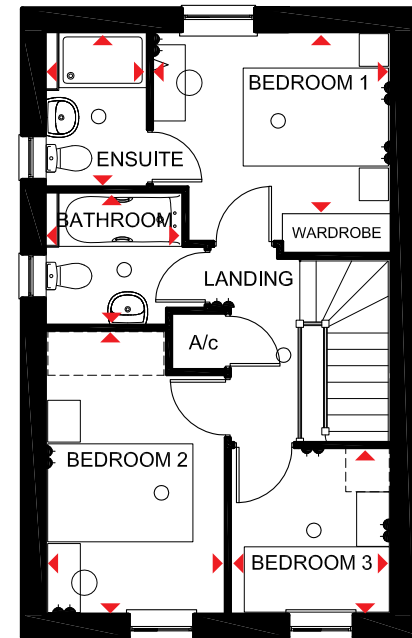
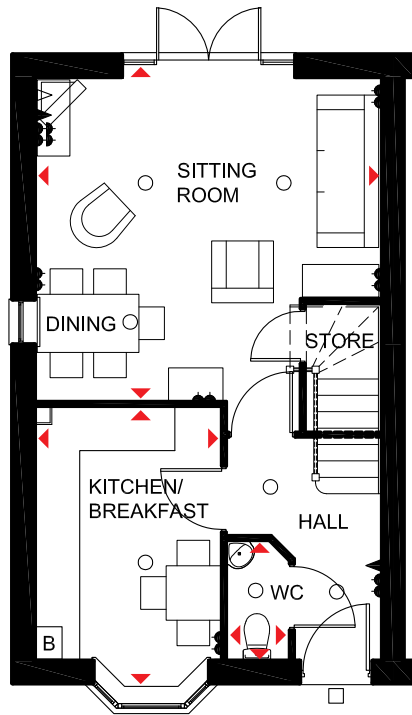
Three bedroom home

Ground Floor

Sitting / Dining	4740 max x 4439mm max	15'7" x 14'7"
Kitchen / Breakfast	2540 x 3847mm max	8'4" x 12'7"
WC	849 x 1625mm max	2'9" x 5'4"

First Floor

Bedroom 1	3266 max x 2497mm max	10'9" x 8'2"
En-suite	1385 x 2119mm max	4'7" x 6'11"
Bedroom 2	2461 x 3891mm max	8'1" x 12'9"
Bedroom 3	2274 x 2190mm	7'6" x 7'2"
Bathroom	1815 x 1875mm max	5'11" x 6'2"



- KEY**
- Light fitting
 - ◻ Electric socket
 - ◀ Telephone outlet point
 - ◁ T.V. aerial socket
 - Radiator
 - Towel radiator
 - B Boiler
 - f/f Fridge/freezer space
 - wm Washing machine space
 - dw Dishwasher space
 - td Tumble dryer space
 - ◀▶ Dimension location

The company reserves the right to change floor layouts at any time. The computer generated image and floor plans are indicative only, to give a general indication of the proposed development and floor layout. The dimensions are accurate to within + or - 50mm. The exterior finishes may vary.



The Kersey

Three bedroom home

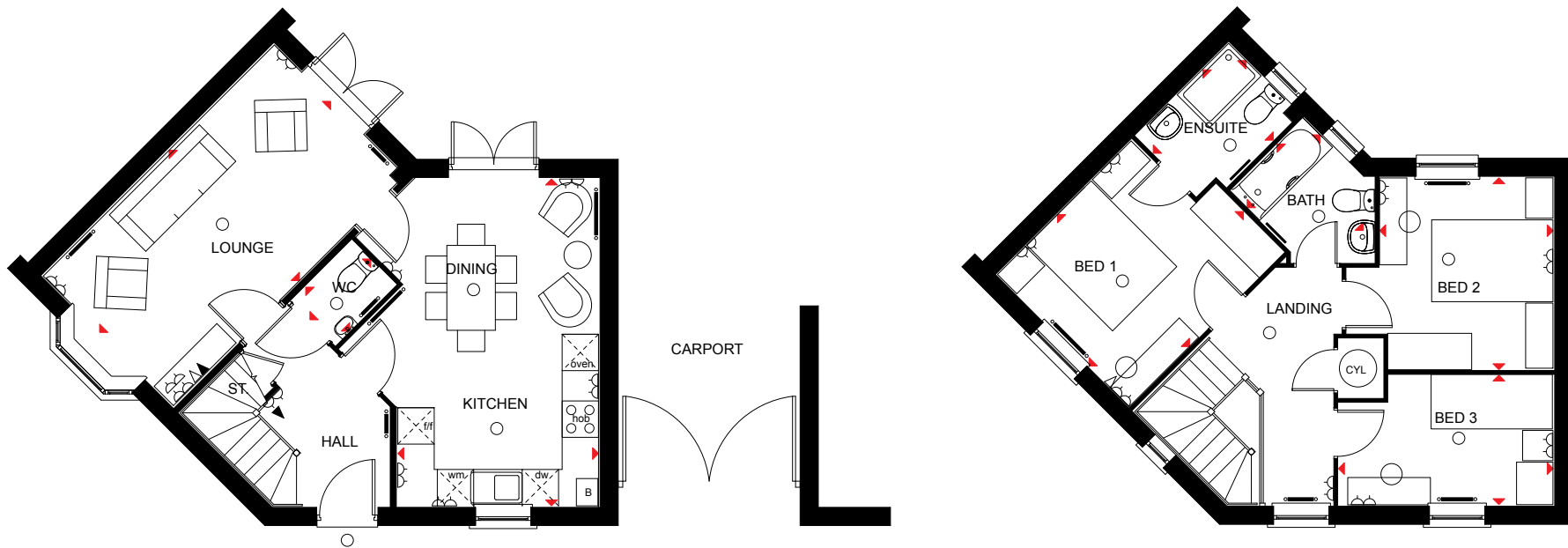
Ground Floor

Lounge	3040 x 5390 mm
Kitchen / Dining	5390 x 3310 mm
WC	1419 x 1025 mm

10'0" x 17'8"
17'8" x 10'10"
4'8" x 3'

First Floor

Bed 1	3601 x 3080 mm	11'10" x 10'0"
Bed	23165 x 2861 mm	10'5" x 9'5"
Bed	33542 x 2136 mm	11'7" x 7'0"
En-suite	2161 x 1640 mm	7'1" x 5'5"
Bath	1700 x 2015 mm	5'7" x 6'7"



- KEY**
- Light fitting
 - ◻ Electric socket
 - ◀ Telephone outlet point
 - ◁ T.V. aerial socket
 - Radiator
 - Towel radiator
 - B Boiler
 - ST Store
 - CYL Cylinder
 - f/f Fridge/freezer space
 - wm Washing machine space
 - dw Dishwasher space
 - ↔ Dimension location

The company reserves the right to change floor layouts at any time. The computer generated image and floor plans are indicative only, to give a general indication of the proposed development and floor layout. The dimensions are accurate to within + or - 50mm. The exterior finishes may vary.



The Hadley

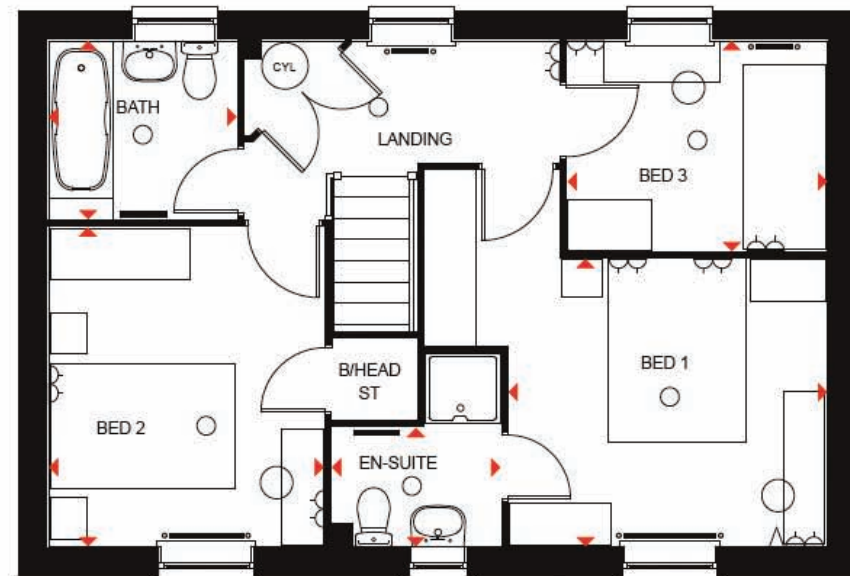
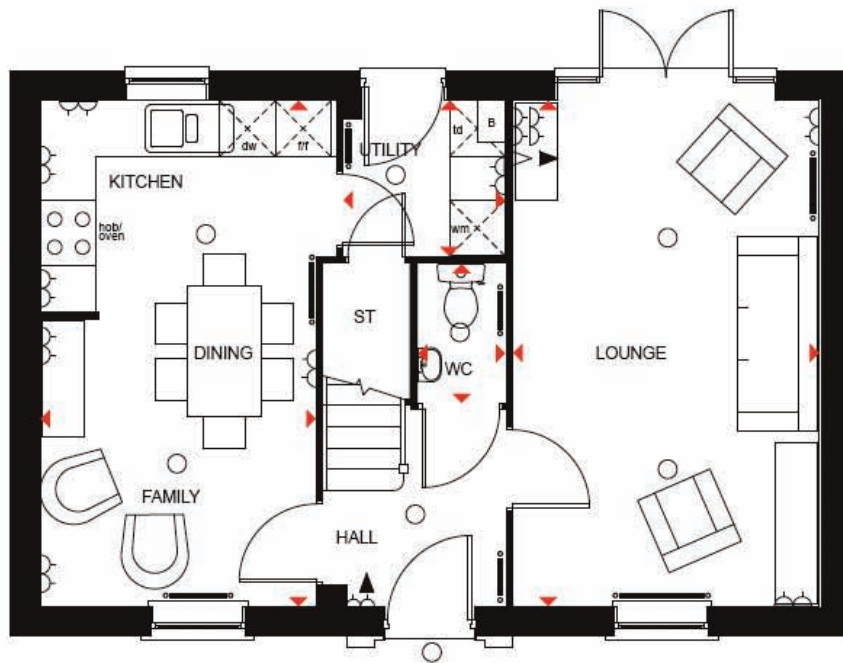
Three bedroom detached home

Ground Floor

Lounge	5455 x 3300 mm	17'11" x 10'10"
Kitchen/Family/Dining	5455 x 2966 mm	17'11" x 9'9"
Utility	1742 x 1675 mm	5'9" x 5'6"
WC	1497 x 935 mm	4'11" x 3'1"

First Floor

Bed 1	3438 x 3101 mm	11'3" x 10'2"
En-suite	1818 x 1275 mm	6'0" x 4'2"
Bed 2	3341 x 2966 mm	11'3" x 9'9"
Bed 3	2798 x 2265 mm	9'2" x 7'5"
Bath	2025 x 1925 mm	6'8" x 6'4"



- KEY**
- Light fitting
 - ◁ Telephone outlet point
 - Radiator
 - B Boiler
 - CYL Cylinder
 - wm Washing machine space
 - td Tumble dryer space
 - ◁ Electric socket
 - ◁ T.V. aerial socket
 - Towel radiator
 - ST Store
 - f/f Fridge/freezer space
 - dw Dishwasher space
 - ◁ Dimension location



The Eaton

Four bedroom detached home with study

Ground Floor

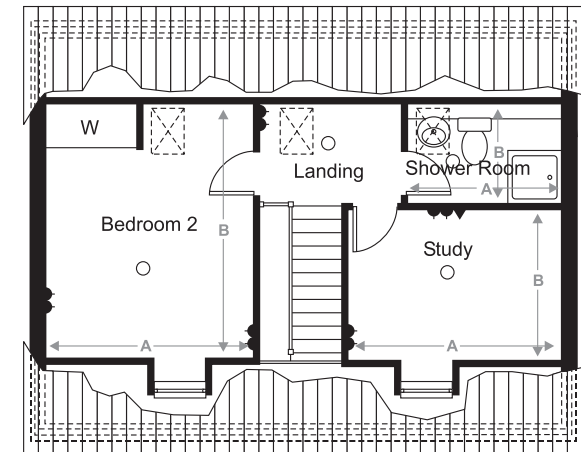
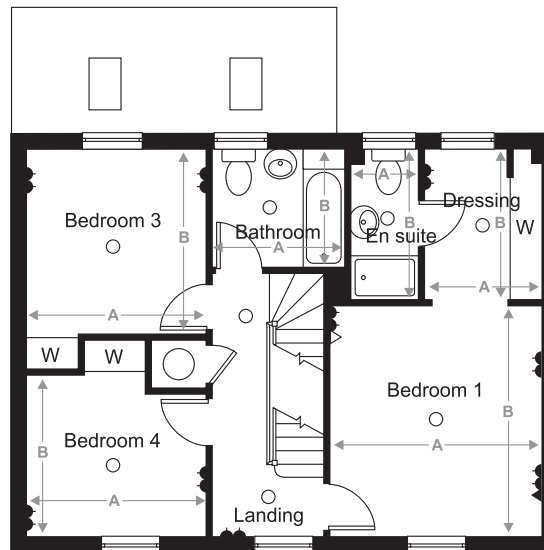
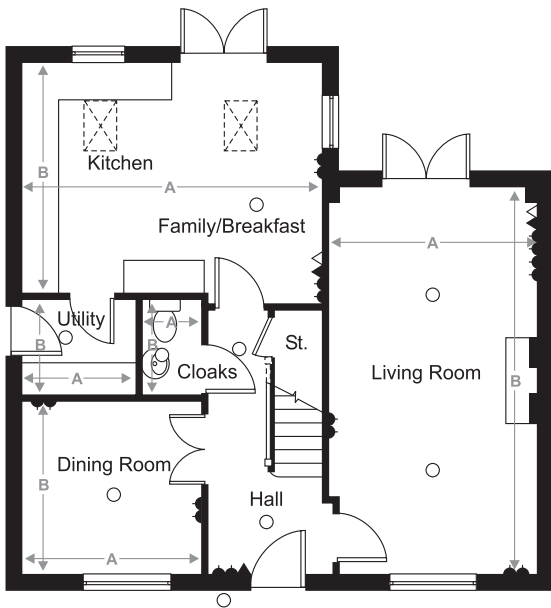
Living Room	3573 x 6580 mm	11'9" x 21'7"
Kitchen/Family/B/Fast	5107 x 3962 mm	16'9" x 13'0"
Dining Room	3052 x 2955 mm	10'0" x 9'8"
Utility	1950 x 1675 mm	6'5" x 5'6"
Cloaks	1027 x 1675 mm	3'4" x 5'6"

First Floor

Bedroom 1	3648 x 3945 mm	12'0" x 12'11"
Dressing Room	2028 x 2560 mm	6'8" x 8'5"
En suite	1200 x 2560 mm	3'11" x 8'5"
Bedroom 3	3037 x 3161 mm	10'0" x 10'4"
Bedroom 4	3037 x 2744 mm	10'0" x 9'0"
Bathroom	2300 x 2005 mm	7'7" x 6'7"

Second Floor

Bedroom 2	3575 x 4380 mm	11'9" x 14'4"
Study	3648 x 2630 mm	12'0" x 8'8"
Shower Room	2620 x 1725 mm	8'7" x 5'8"



Key

Single switched socket outlet Double switched socket outlet Ceiling Lighting Telephone outlet TV aerial outlet Radiator

The company reserves the right to change floor layouts at any time. The computer generated image and floor plans are indicative only, to give a general indication of the proposed development and floor layout. The dimensions are accurate to within + or - 50mm. The exterior finishes may vary.



The Coppice

Four bedroom home

Ground Floor

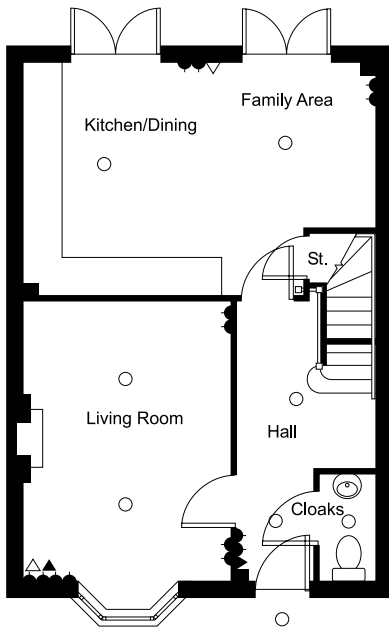
Living Room	3330 x 4500mm	10'11" x 14'9"
Kitchen/Dining/		
Family	5680 x 3750mm	17'7" x 12'3"
Cloaks	875 x 1800mm	2'10" x 5'10"

First Floor

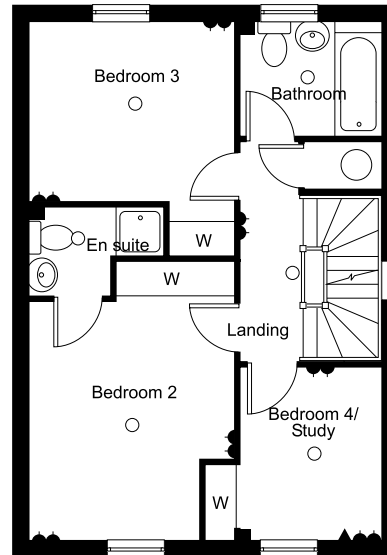
Bedroom 2	3330 x 3900mm	10'11" x 12'9"
En suite	2245 x 1435mm	7'4" x 4'8"
Bedroom 3	3405 x 2915mm	11'2" x 9'6"
Bathroom 4/Study	2200 x 2845mm	7'2" x 9'4"
Bathroom	2200 x 1825mm	7'2" x 5'11"

Second Floor

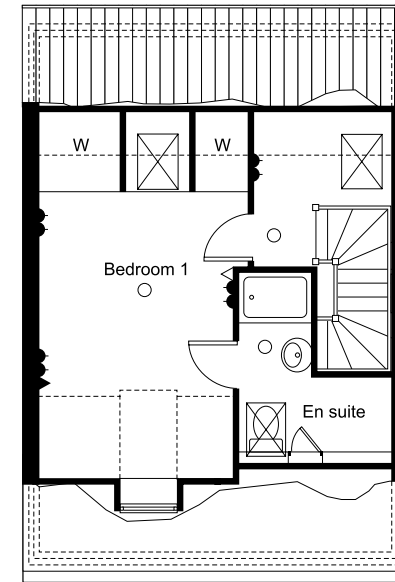
Bedroom 1	3380 x 5960mm	11'1" x 19'7"
En-suite	2470 x 1400mm	8'1" x 4'7"



Ground Floor



First Floor



Second Floor

KEY Double switched socket outlet Telephone outlet TV aerial outlet Ceiling Lighting Boiler A/C Airing Cupboard

The company reserves the right to change floor layouts at any time. The computer generated image and floor plans are indicative only, to give a general indication of the proposed development and floor layout. The dimensions are accurate to within + or - 50mm. The exterior finishes may vary.



The Eden

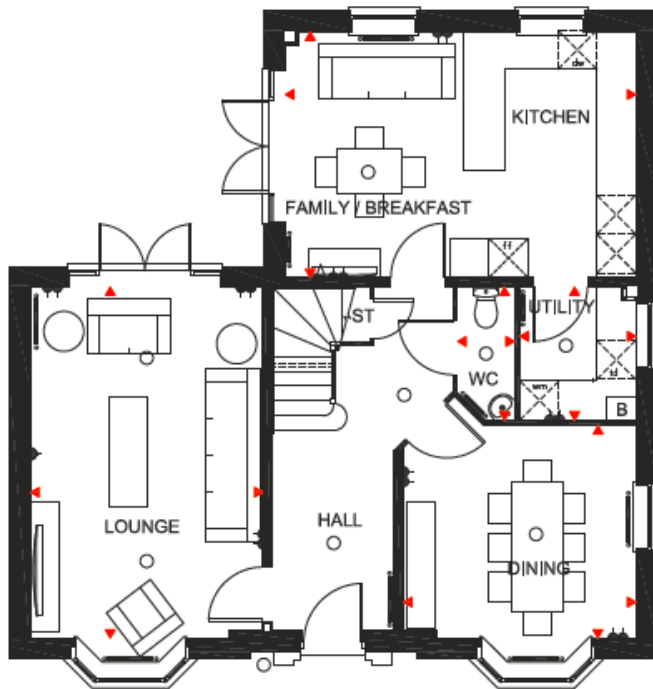
Four bedroom detached home

Ground Floor

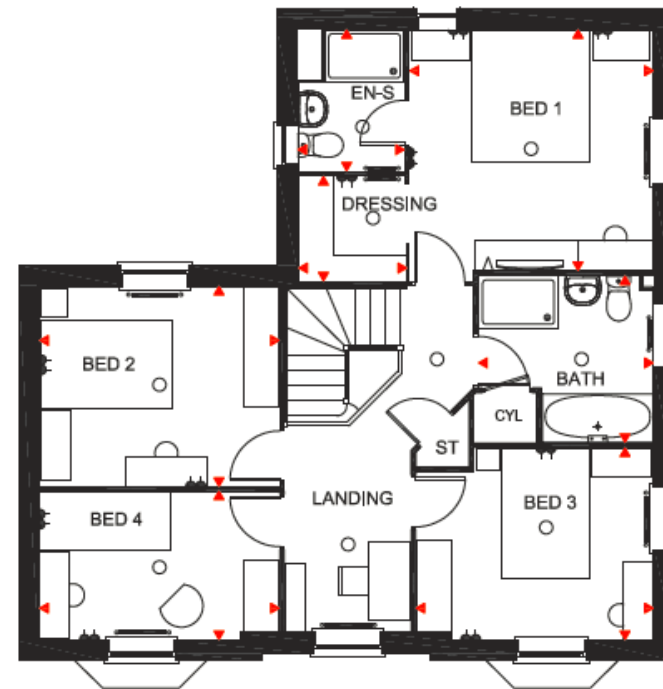
Lounge	5415 x 3588mm	17'9" x 11'9"
Kitchen / Family	5415 x 3788mm	17'9" x 12'5"
Utility	2050 x 1787mm	6'8" x 5'10"
Dining	3588 x 3276mm	11'9" x 10'9"
W.C.	2050 x 874mm	6'8" x 2'10"

First Floor

Bedroom 1	3721 x 3689mm	12'2" x 12'1"
En-suite	2162 x 1618mm	7'1" x 5'3"
Dressing Area	1643 x 1600mm	5'4" x 5'3"
Bedroom 2	3649 x 3064mm	11'11" x 10'0"
Bedroom 3	3614 x 2937mm	11'10" x 9'7"
Bedroom 4	3650 x 2275mm	12' x 7'5"
Bathroom	2659 x 2549mm	8'8" x 8'4"



Ground Floor



First Floor

KEY	○	Light fitting	◀	Telephone outlet point	—○—	Radiator	B	Boiler	CYL	Cylinder	wm	Washing machine space	td	Tumble dryer space
	◻	Electric socket	◁	T.V. aerial socket	—	Towel radiator	ST	Store	fff	Fridge/freezer space	dw	Dishwasher space	◄►	Dimension location

The company reserves the right to change floor layouts at any time. The computer generated image and floor plans are indicative only, to give a general indication of the proposed development and floor layout. The dimensions are accurate to within + or - 50mm. The exterior finishes may vary.



The Rothley

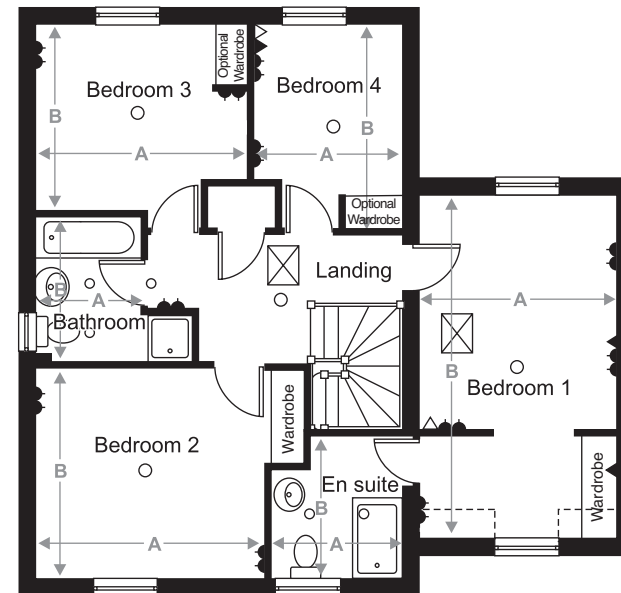
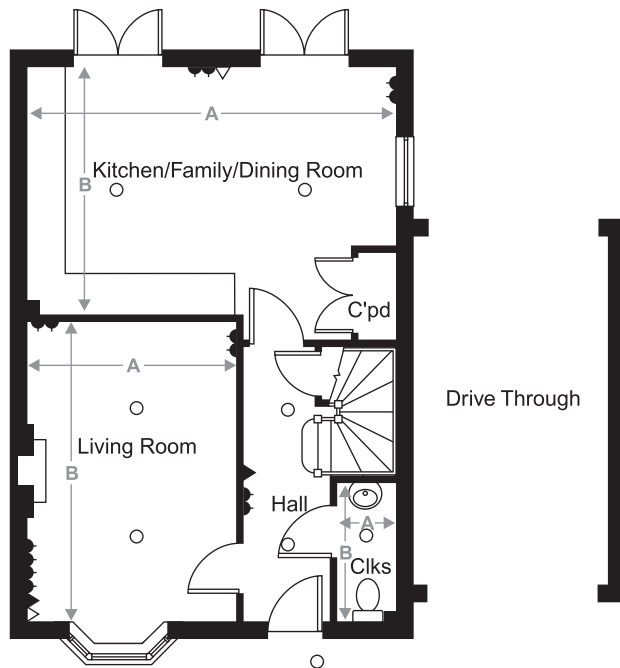
Four bedroom detached home

Ground Floor

Living Room	3350 x 4850 mm	11' 00" x 15' 11"
Kitch/Family/Dining	5934 x 3890 mm	19' 6" x 12' 9"
Cloaks	950 x 2000 mm	3' 1" x 6' 7"

First Floor

Bedroom 1	3135 x 3772 mm	10' 3" x 12' 4"
En suite	2134 x 2274 mm	7' 0" x 7' 6"
Bedroom 2	3725 x 3295 mm	12' 3" x 10' 10"
Bedroom 3	3450 x 2875 mm	11' 4" x 9' 4"
Bedroom 4	2409 x 3315 mm	7' 11" x 10' 10"
Bathroom	2675 x 2530 mm	8' 9" x 8' 4"



Key

Single switched socket outlet ▲ Double switched socket outlet ▲▲ Ceiling Lighting ○ Telephone outlet ▲ TV aerial outlet △ Radiator —

The company reserves the right to change floor layouts at any time. The computer generated image and floor plans are indicative only, to give a general indication of the proposed development and floor layout. The dimensions are accurate to within + or - 50mm. The exterior finishes may vary.



The Holden

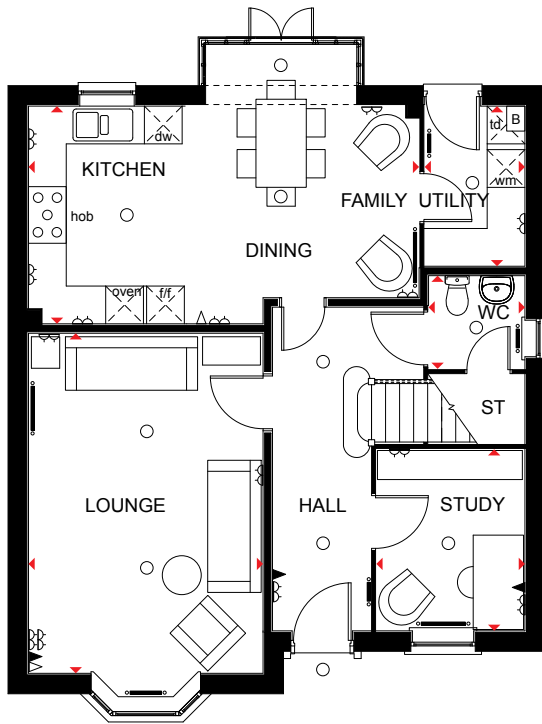
Four bedroom detached home

Ground Floor

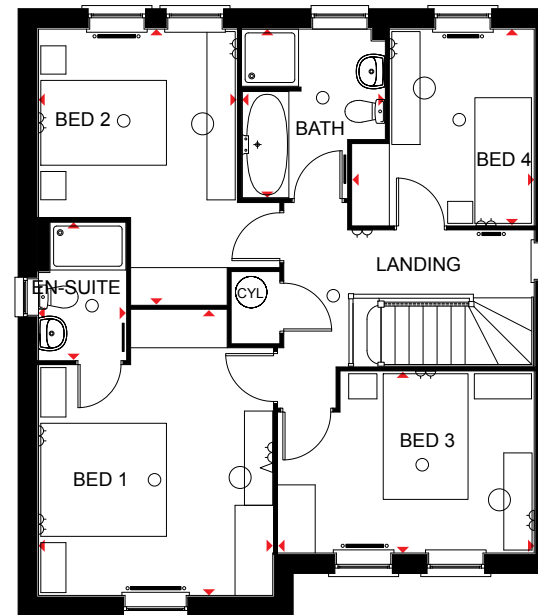
Lounge	3728 x 5405 mm	12'3" x 17'9"
Kitchen/Family/Dining	6208 x 4693mm max	20'4" x 15'4"
Study	2886 x 2361 mm	9'5" x 7'9"
Utility	2545 x 1593 mm	8'4" x 5'3"
WC	1532 x 1481 mm	5'0" x 4'10"

First Floor

Bed 1	3728 x 4543 mm	12'3" x 14'11"
En-suite	1390 x 2190 mm	4'7" x 7'2"
Bed 2	3153 x 4384 mm	10'4" x 14'5"
Bed 3	2886 x 4073 mm	9'6" x 13'4"
Bed 4	3120 x 2893 mm	10'3" x 9'6"
Bath	2685 x 2266 mm	8'10" x 7'5"



Ground Floor



First Floor

KEY	○	Light fitting	◀	Telephone outlet point	—○	Radiator	B	Boiler	CYL	Cylinder	wm	Washing machine space	td	Tumble dryer space
	◻	Electric socket	◁	T.V. aerial socket	—	Towel radiator	ST	Store	f/f	Fridge/freezer space	dw	Dishwasher space	◄►	Dimension location

Computer generated images are for illustrative purposes only and individual features often vary from one plot to another. Floor plans are indicative only to give a general indication of the proposed development and floor layout. The dimensions are accurate to within + or -50mm. Dimensions should not be used for carpet sizes, appliance spaces or items of furniture. Please ask our Sales Advisors for details of the treatments specified for individual plots. Computer generated images are for general guidance only and are not intended to form part of any contract or warranty. Furniture shown is for illustrative purposes only.



The Winstone

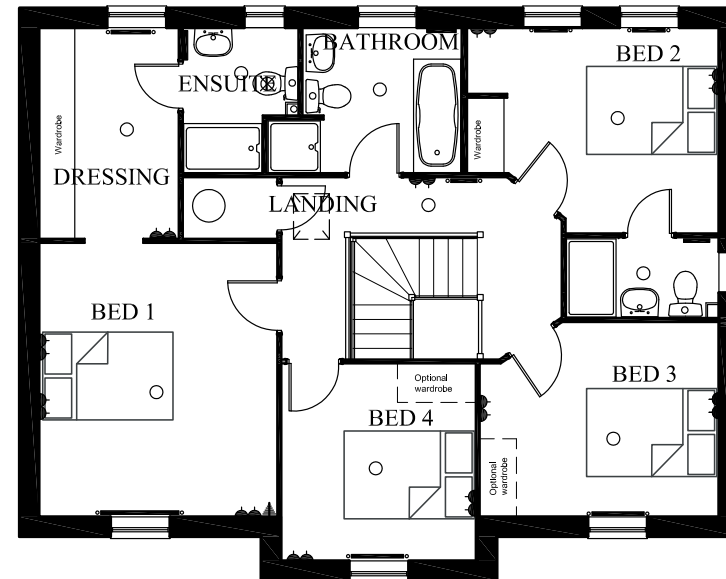
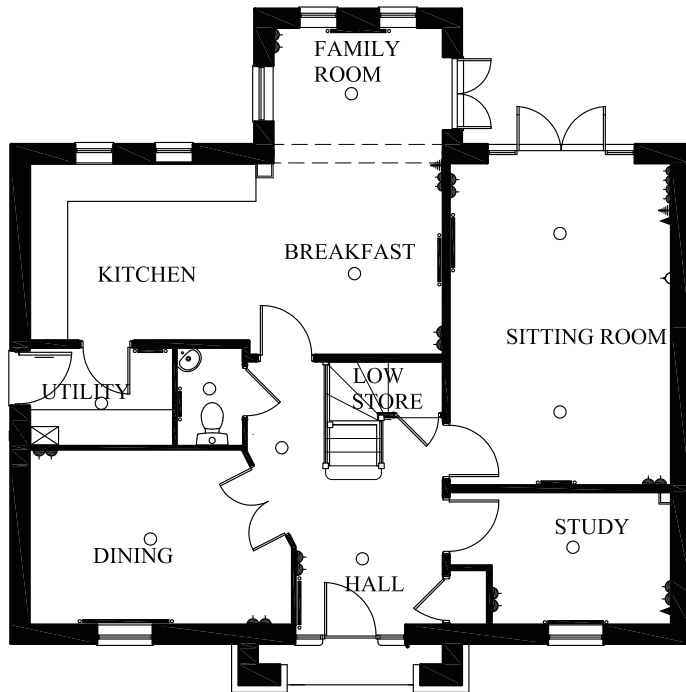
Four bedroom home

Ground Floor

Kitchen	2860 x 6690 mm	9'4" x 21'11"
Utility	2297 x 1572mm	7'6" x 5'2"
Family	2714 x 2175 mm	8'11" x 7'1"
Sitting Room	5210 x 3570 mm	17'1" x 11'8"
Dining	2810 x 4230 mm	9'3" x 13'10"
W.C.	1045 x 1572 mm	3'5" x 5'3"
Study	2125 x 3570 mm max	6'11" x 11'8"

First Floor

Bedroom 1	4169 x 3620 mm	13'8" x 10'10"
En-suite	1450 x 1146 mm	4'9" x 3'9"
Dressing	3203 x 2105 mm	10'6" x 6'11"
Bedroom 2	3120 x 3827 mm	10'3" x 12'6"
Bedroom 3	2953 x 3632 mm	9'8" x 11'11"
Bedroom 4	3031 x 2953 mm	9'11" x 9'8"
Bathroom	2195 x 2411 mm	7'2" x 7'11"



- KEY**
- Light fitting
 - ◀ Telephone outlet point
 - Radiator
 - B Boiler
 - CYL Cylinder
 - wm Washing machine space
 - td Tumble dryer space
 - ◻ Electric socket
 - ◁ T.V. aerial socket
 - Towel radiator
 - ST Store
 - f/f Fridge/freezer space
 - dw Dishwasher space
 - ◀▶ Dimension location

Computer generated images are for illustrative purposes only and individual features often vary from one plot to another. Floor plans are indicative only to give a general indication of the proposed development and floor layout. The dimensions are accurate to within + or -50mm. Dimensions should not be used for carpet sizes, appliance spaces or items of furniture. Please ask our Sales Advisors for details of the treatments specified for individual plots. Computer generated images are for general guidance only and are not intended to form part of any contract or warranty. Furniture shown is for illustrative purposes only.



The Lichfield

Five bedroom detached home

Ground Floor

Lounge	5084 x 4275 mm	6'8" x 14'0"
Kitchen/Family/		
Breakfast	3775 x 7115 mm	12'5" x 23'4"
Utility	2500 x 1675 mm	8'2" x 5'6"
Dining	3550 x 2994 mm	11'8" x 9'10"
Study	3605 x 2539 mm	11'10" x 8'4"
WC	1675 x 1016 mm	5'6" x 3'4"

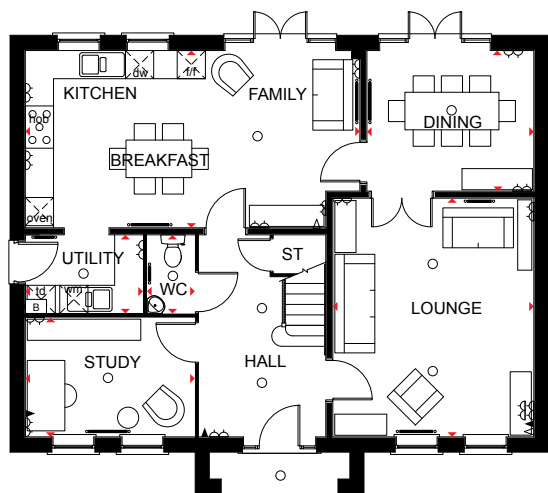
First Floor

Bed 1	5084 x 4275 mm	16'8" x 14'0"
Dressing	2994 x 2249 mm	9'10" x 7'5"
En-suite	2994 x 2500 mm	9'10" x 8'2"
Bed 4	3848 x 4303 mm	12'8" x 14'1"
Bed 5	3509 x 4450 mm	11'6" x 14'7"
Bath 1	2268 x 2708 mm	7'5" x 8'11"

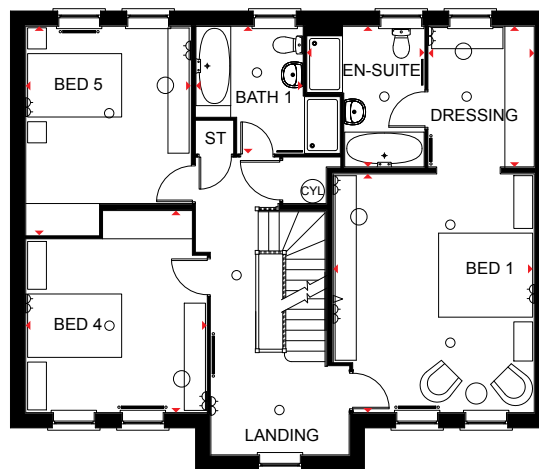
Second Floor

Bed 2	5409* x 3465 mm	17'9"* x 11'4"
Bed 3	5409* x 4336 mm	17'9"* x 14'3"
Bath 2	1733* x 3715 mm	5'8"* x 12'2"

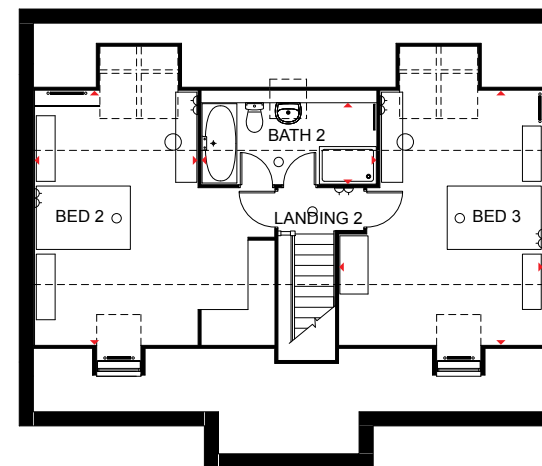
*Overall floor dimension includes lowered ceiling areas



Ground Floor



First Floor



Second Floor

KEY

- Light fitting
- ◀ Telephone outlet point
- Radiator
- B Boiler
- CYL Cylinder
- wm Washing machine space
- ◊ Electric socket
- ◁ T.V. aerial socket
- Towel radiator
- ST Store
- f/f Fridge/freezer space
- dw Dishwasher space
- ◄► Dimension location

The company reserves the right to change floor layouts at any time. The computer generated image and floor plans are indicative only, to give a general indication of the proposed development and floor layout. The dimensions are accurate to within + or - 50mm. The exterior finishes may vary.

Kibworth Meadows

*Wistow Road, Kibworth, Leicester,
Leicestershire. LE8 0RX*

Telephone: 0844 811 55 44



Visit www.dwh.co.uk or call 0844 811 55 44
or visit our sales office, open daily 10.30 – 5.30

This brochure and all the information detailed therein does not and will not constitute any part of any offer or contract, or be a representation inducing such a contract. This brochure and all photographs, illustrations, plans and sizes are indicative only to give a general indication of the proposed development and floor layouts. We aim to ensure that the room dimensions printed are correct to either 75mm (3") more or less than the actual dimension. David Wilson Homes operates a policy of continuous product development, therefore some features, specification and elevational treatments may vary at the discretion of David Wilson Homes.

David Wilson Homes reserves the right to alter any part of the development. None of the statements and information contained in this brochure are to be relied upon as statements or representations of fact, and any intending purchaser must satisfy him/herself by inspection or otherwise as to the correctness of any statement. Any intending purchaser is advised to contact David Wilson Homes to ascertain the availability of any type of property.



Where quality lives

David Wilson Homes