

CAROLINE PLACE

NOTTING HILL W2







CAROLINE PLACE

NOTTING HILL W2

A wide, end of terrace, five bedroom house with front and rear gardens and a garage, for sale in this quiet cul-de-sac close to Kensington Gardens, W2.

This well-proportioned house has two excellent floors of entertaining space including a wonderful drawing room running the length of the house leading to a beautiful kitchen and bifolding doors leading out to the garden.

The house further benefits from five bedrooms, one of which is currently utilised as a study, a large patio and a separate garage. Caroline Place is an extremely peaceful and well located cul-de-sac close to the excellent shopping and transport facilities of Queensway and Notting Hill Gate.

The open spaces of Hyde Park and Kensington Gardens are also close by.



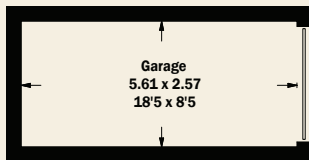
CAROLINE PLACE

NOTTING HILL W2

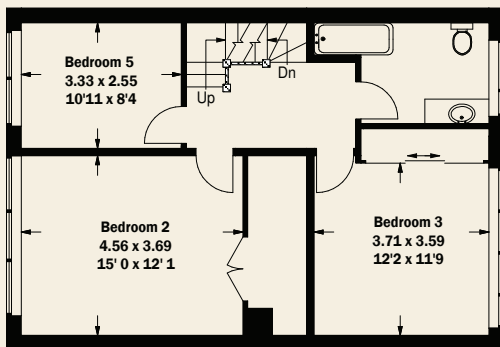
CONSUMER PROTECTION FROM UNFAIR TRADING REGULATIONS 2008. THIS BROCHURE AND THE DESCRIPTIONS AND MEASUREMENTS HEREIN DO NOT CONSTITUTE REPRESENTATION AND WHILST EVERY EFFORT HAS BEEN MADE TO ENSURE ACCURACY, THIS CANNOT BE GUARANTEED.

TENURE: FREEHOLD
GROSS INTERNAL AREA: 288 SQ M / 3,095 SQ FT APPROX
LOCAL AUTHORITY: ROYAL BOROUGH OF KENSINGTON & CHELSEA
EPC RATING: C

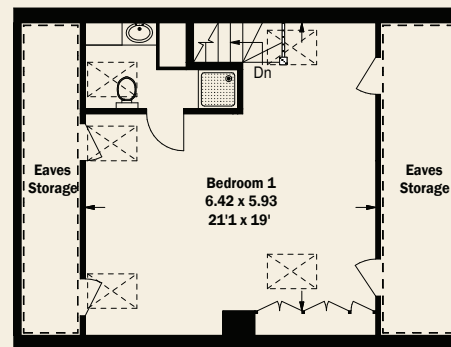
5 BEDROOMS, 3 BATHROOMS (2 EN SUITES), RECEPTION ROOM, OPEN PLAN KITCHEN/ RECEPTION ROOM, UTILITY ROOM, CLOAKROOM, 2 PATIOS, GARDEN, GARAGE.



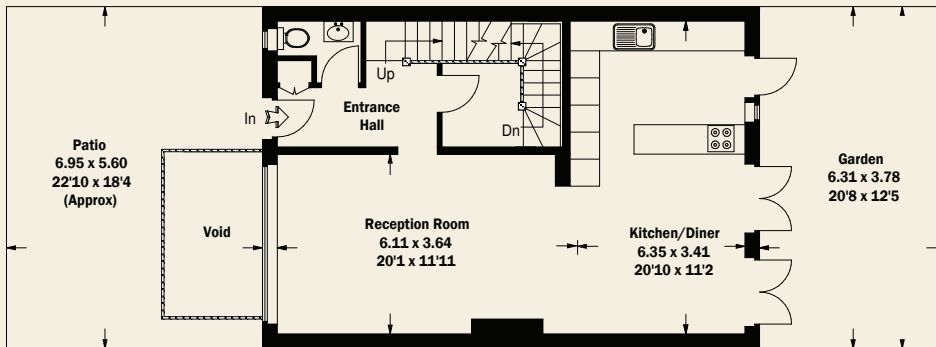
GARAGE



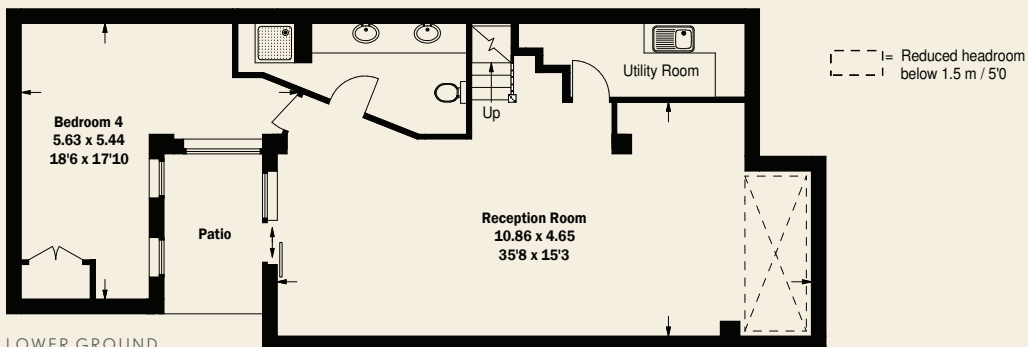
FIRST FLOOR



SECOND FLOOR



GROUND FLOOR



LOWER GROUND FLOOR

NOTTING HILL
T 020 7221 4805
205 WESTBOURNE GROVE LONDON W11 2SB
E NOTTINGHILL@BECTIVE.CO.UK

WWW.BECTIVE.CO.UK

BECTIVE
- LESLIE MARSH -